

QRULES INSTALLATION GUIDE

PRODUCT: qRules
LAST UPDATED: June 5, 2017

REQUIREMENTS

- qRules requires InfoPath 2007 SP2 or newer.
- qRules Injector requires .NET Framework 4.0 or greater.
- qRules injected forms require .NET Framework 4.0 or greater.
- qRules is mainly intended for use in forms developed off the blank, new form template type.
 - qRules is not compatible with SharePoint List forms because these don't allow code.
 - Other form types, such as email forms or Document Information Panel forms, may support qRules, but in depth testing has not been performed.
- Additional requirements for individual commands will be discussed in command-specific documentation.

DOWNLOAD AND INSTALL QRULES

You can download the most recent version of qRules at our website, [Qdabra.com](http://www.qdabra.com). If you run into issues while downloading or installing qRules, please contact support@qdabra.com for assistance.

1. Launch your preferred web browser.
2. Open <http://www.qdabra.com/>.
3. Click on the **Tools and Templates** menu item.
4. Click on **qRules**. (Direct link: http://www.qdabra.com/en/products/qRules_new.aspx)
5. Click the **Free Trial** button.
6. Fill out the form and click the **Request Download Link** button.
7. You will receive an email with your download link. Click the link in the email to download qRules.

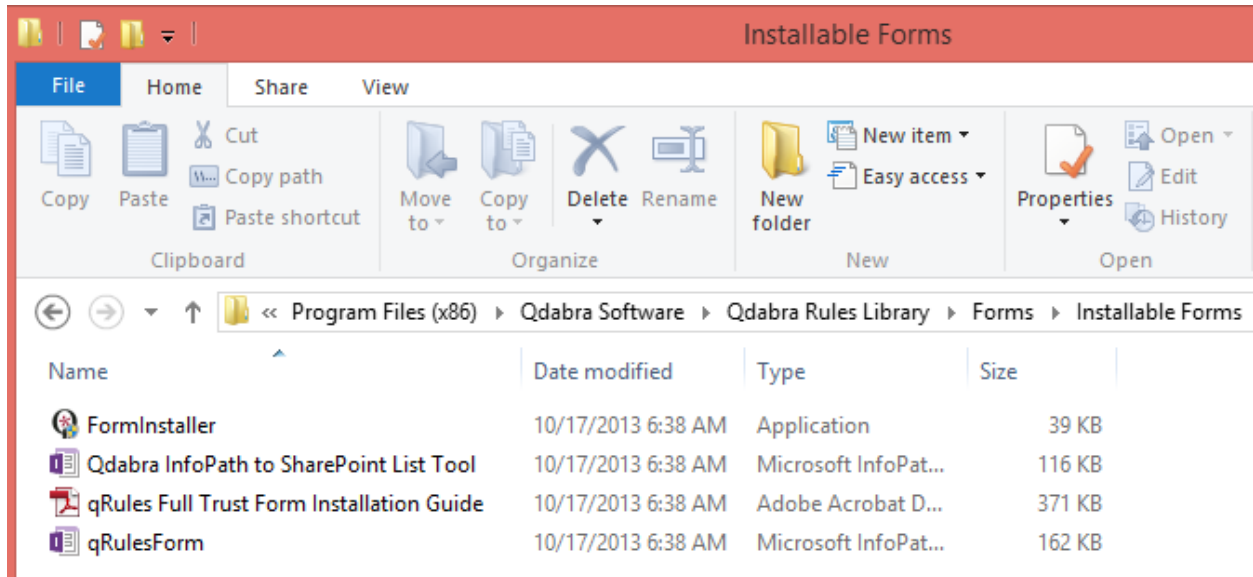
The qRules zip package contains the installer (which will work for both 32 bit and 64 bit machines).

After downloading qRules, install it on your machine.

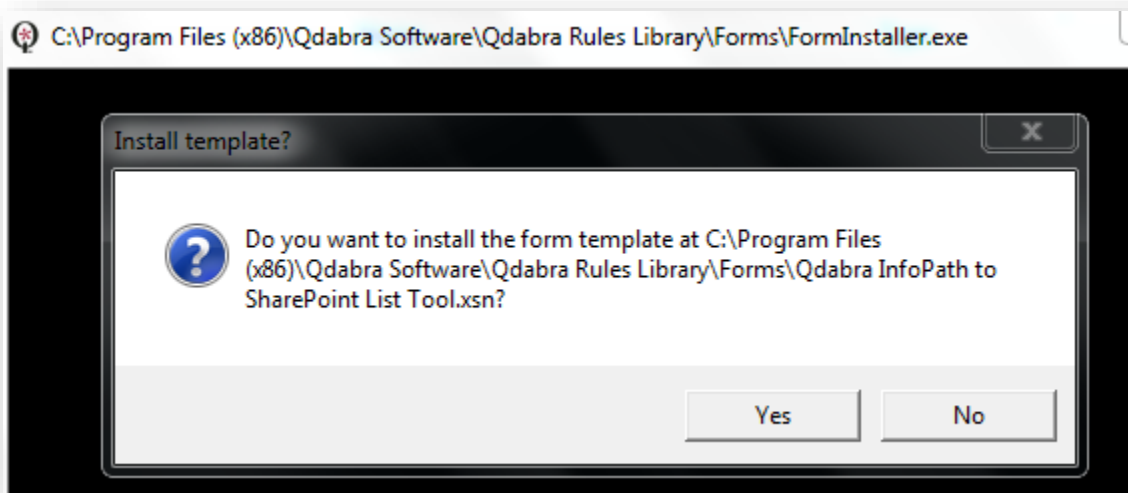
1. Double click on setup.exe to start the installation
 - a. NOTE: For versions of qRules prior to version 8.1 click on setup.exe and select **Run As Administrator**. Version 8.1 and later no longer require an admin install.
2. On the Welcome screen, click **Next**.
3. Select **I Agree** after reading the EULA and click **Next**.
4. Select an installation folder (or make no changes to accept the default location) and click **Next**.
5. Click **Next** again to complete installation.
6. You'll see a progress bar for the on-going installation.

7. Click **Close** to exit the installer.

After qRules has been installed, you'll find a folder called **Installable Forms** in the installation path (*C:\Program Files (x86)\Qdabra Software\Qdabra Rules Library\Forms\Installable Forms* is the default path for a 64 bit installation, *C:\Program Files\Qdabra Software\Qdabra Rules Library\Forms\Installable Forms* for 32 bit). The **Forms** folder contains Qdabra's **FormsInstaller** as well as two forms which should be installed (**qRulesForm** and **Qdabra InfoPath to SharePoint List Tool**).

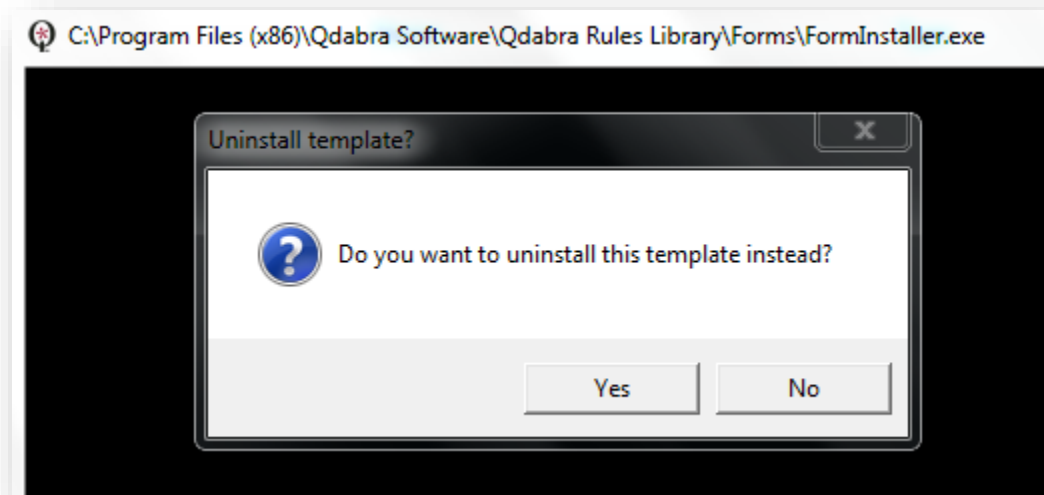


To install the forms, close InfoPath and then drag the icon for “**Qdabra InfoPath to SharePoint List Tool**” onto **FormInstaller**. Then follow the prompts to install.



Repeat for the **qRulesForm** XSN if desired.

If you need to remove the forms, click **No** in the first dialog, to bring up a second dialog which asks if you wish to uninstall.



The parent folder (*C:\Program Files (x86)\Qdabra Software\Qdabra Rules Library\Forms* or *C:\Program Files\Qdabra Software\Qdabra Rules Library\Forms*) contains the **QdFile** form template, which DOES NOT need to be installed.

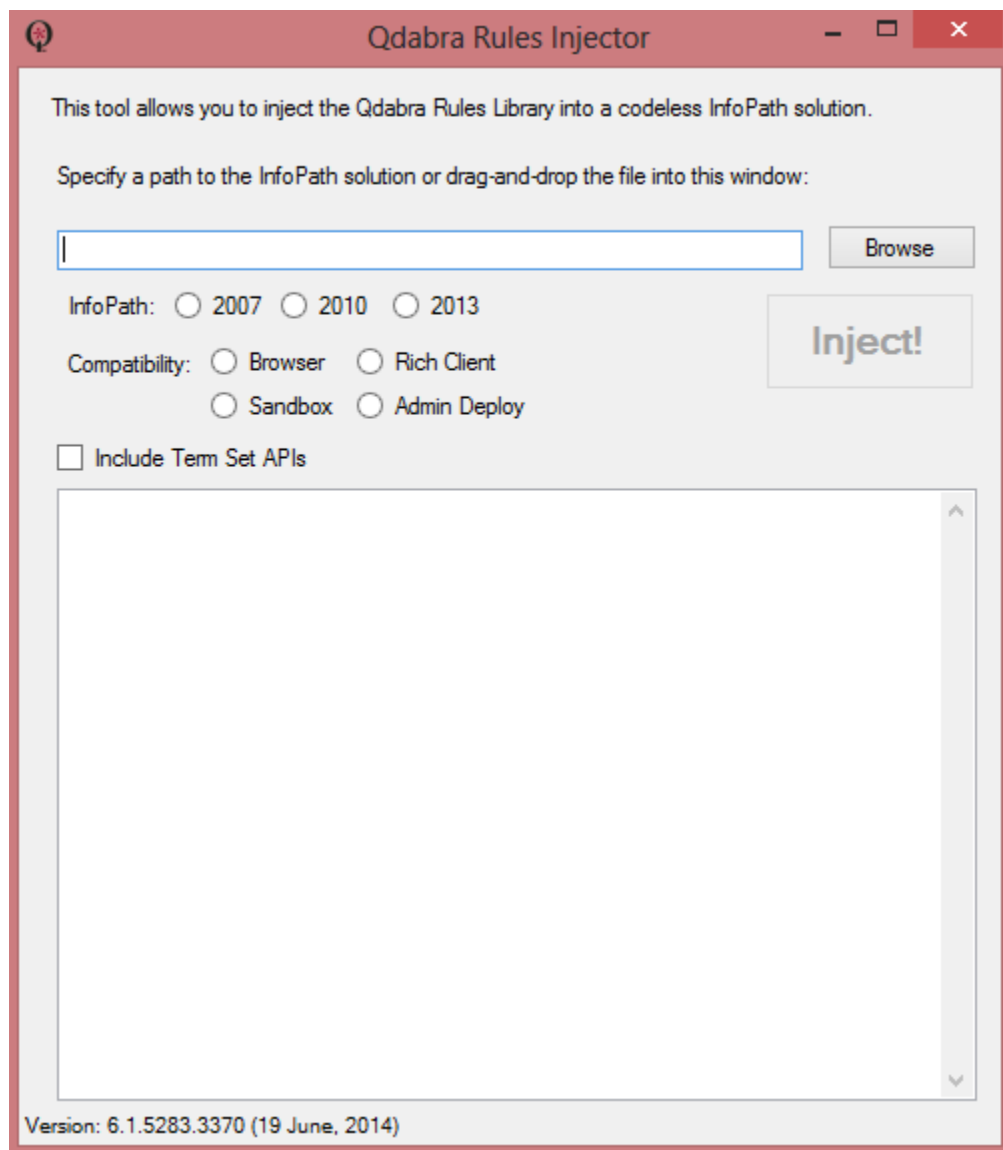
ADDING QRULES TO FORM TEMPLATES

Adding qRules to forms is a simple process:

1. Create a backup of your XSN. This is necessary because injection overwrites your XSN.
2. Close the form you wish to inject. This is necessary because injection will fail on an open form.

Injection will also fail for a form that already contains custom code. If you would like to use qRules with your own code in an InfoPath form, please refer to [this PDF document](#) for details.

3. Launch the Qdabra Rules Injector tool by clicking on **Start > Programs > Qdabra > Tools > qRules > qRules Injector**.



4. Specify the XSN file you wish to inject with qRules. There are four ways to do this:

- Browse to select the file.
- Drag and drop the file.
- Hand-type the path to the file.
- Leave the default value from the previous use of the injector.

There are different file types you could specify:

- An XSN form template, of course.
- You can select the manifest.xsf file from an extracted file folder.
- You can also inject InfoPath template parts (XTPs).

5. The injector will try to automatically detect the InfoPath version. However, you can change this in the injector if necessary.

6. Choose the type of form you are injecting qRules into:

- Browser Form (InfoPath Form Services, IPFS):

- Not all commands are available in browser forms. Please refer to the Command overview to learn which commands are browser compatible.
 - If you select “Rich Client”, all commands will be available (except **SubmitAsUser**).
7. Click the **Inject** button.
 8. Close the injector.

CONTACT INFORMATION

Qdabra Software
218 Main Street, Suite 731, Kirkland, WA 98033

Phone: 877.544.2389
Email: Support@Qdabra.com
Website: <http://www.qdabra.com>
Community: <http://www.infopathdev.com>