



Database Accelerator (DBXL) v2.7 Release Notes

This document contains a list of known issues, troubleshooting hints and workarounds for a variety of issues related to Qdabra's DBXL v2.7.

Server installation	2
Standalone installation	10
SQL-specific Installation Issues	12
Upgrading and migration	15
Permissions	16
DBXL Administration Tool (DAT)	17
SharePoint Integration	22
SharePoint Mappings	23
Browser (IPFS) Forms	31
Database Mapping	34
QuerySharePoint	36
QueryBuilder	37
QueryDB	39
Miscellaneous	41
Dashboard	44



SERVER INSTALLATION

DBXL CAN ONLY BE INSTALLED ON MACHINES THAT ARE PART OF A DOMAIN

Database Accelerator (DBXL) can only be installed on machines that are part of a domain. In order to verify that your machine is part of a domain, go to **Start**, right click **My Computer** and choose **Properties**. Select the **Computer Name** tab and click **Change**. Verify that your machine is part of a domain. Workgroups will not work. You may still choose to install DBXL on a non-domain machine but, as a result, parts of DBXL that deal with authentication (such as the Active Directory web service) will fail to work.

INSTALL DBXL ON THE SAME SITE AS SHAREPOINT

When using DBXL and SharePoint jointly, we recommend installing DBXL on the same site that hosts the main SharePoint site (typically on port 80). If DBXL and SharePoint reside on separate machines you will need to select the Web Service option when creating a SharePoint mapping in DAT. You will also need to configure SSO correctly in order to allow DBXL and SharePoint to communicate. Finally, if you're going to use IPFS, having it on a different port creates a "cross-domain" data adapter access which makes configuration more difficult.

Please also verify that the site is running and not stopped.

PAGE NOT FOUND ERROR AFTER INSTALLING DBXL

After installing DBXL, you may see a "Page Not Found" error when accessing the asmx pages. Two possible reasons for this are:

1. DBXL was installed on a port other than 80. To fix this, make sure that you have unblocked that port from the network's firewall.
2. The website is configured to use multiple host names and IP addresses. The easiest workaround is to access your site settings (via the IIS management console) and temporarily remove all hostnames/IP addresses that will not work. Make sure to leave only the hostname that the currently logged-in user can access. Uninstall DBXL and reinstall it. After DBXL installs successfully, you can re-add the additional hostnames and/or IP addresses.
3. The DBXL installer creates a QdabraWebService folder on the site where it was installed. Please check that this folder allows *Read* permission to authenticated users. This is usually granted by DBXL installer automatically, but in rare cases the person installing DBXL will need to manually add the permission.

ERROR MESSAGE: CLIENT FOUND RESPONSE CONTENT TYPE OF 'TEXT/HTML; CHARSET=UTF-8', BUT EXPECTED 'TEXT/XML'

When installing DBXL (especially on servers with MOSS 2007) you may get the following error: *Error initializing DBXL database. Client found response content type of 'text/html; charset=utf-8', but expected 'text/xml'*. The error may also show as: *"The installation failed, and the rollback was performed. --> An error occurred configuring system doctypes."* The event viewer, in turn, will show: *"Error bootstrapping system doctypes. Call to*



<http://www.qdabra.com>

Last updated on 1/5/2013 6:59 PM

Copyright © 2006-2012 Autonomy Systems, LLC. All rights reserved.

BootstrapSystemDocumentTypes at http://<servername>/QdabraWebService/ failed. Encountered a critical error and needs attention."

Here are some solutions to try if you encounter this:

- A. This error usually relates to local machine accounts not having database administration rights or membership in the SharePoint permissions groups. Verify that the account you are using to execute the installer and the Network Service (or the account you are selecting for DBXL) have administrative permissions in SQL.
- B. Once SharePoint is installed and the default SharePoint web site (on port 80) is provisioned, the "Default Web Site" on the machine is locked down. Typically, one would want to install DBXL on the "SharePoint - 80" web site. However, the initial configuration panel of the DBXL installer defaults to "Default Web Site". "Default Web Site" and "SharePoint - 80" are not the same, however -- ensure that "SharePoint - 80" is selected as the web site for installation.
- C. Ensure that the SharePoint site (from B above) is not stopped in IIS.

DBXL INSTALLATION PRODUCES AN HTTP ERROR 405

During installation, you may encounter an error that reads: *"The installation failed, and the rollback had been performed. Error initializing DBXL database. The request failed with HTTP status 405: Method not allowed."* The problem arises when ASP.NET has not been registered with IIS, which happens when .NET 2.0 is installed before IIS. To remedy this problem, run *aspnet_regiis.exe -i* found in C:\WINDOWS\Microsoft.NET\Framework\{Version}.

DBXL INSTALLATION PRODUCES AN HTTP ERROR 404

There are four known reasons for an HTTP Error 404 when installing DBXL.

1. Please check that ASP.NET is enabled in the web service extensions of IIS manager. When setting up the server where DBXL is going to be installed, there is an option to allow ASP.NET applications under Windows Components Application Server. This needs to be installed in order for DBXL to install and run correctly.
2. Your site may be configured to use multiple hostnames or multiple IP addresses. If DBXL picks the wrong hostname/IP, the installation could fail. The easiest workaround is to access your site settings (via the IIS management console) and temporarily remove all hostnames/IP addresses that will not work. Make sure to leave only the hostname that the currently logged-in user can access. After DBXL installs successfully, you can re-add the additional hostnames and/or IP addresses.
3. The HTTP 404 error could be caused by a proxy setting in Internet Explorer. Please disable the proxy to allow the installation to succeed.
4. The final possibility involves applications that use ports 80 or 443. The next section covers this scenario.

ISSUES WITH APPLICATIONS THAT USE PORTS 80 OR 443



<http://www.qdabra.com>

Last updated on 1/5/2013 6:59 PM

Copyright © 2006-2012 Autonomy Systems, LLC. All rights reserved.

Here is a scenario that could take place with DBXL: You obtain an error that says: *“Unable to start debugging on the web server. The server committed a protocol violation. Section=ResponseStatusLine”*. Then you discover (in the IIS Management Console) that the web site is not running. When you try to start, you get the error: *“Unexpected Error 0x8ffe2740 Occurred”*.

This issue is not exclusive to DBXL. It happens because some applications (e.g. Skype) use common communication ports (e.g. 80 for http or 443 for https) can conflict with Internet Information Server. If the application is installed prior to IIS, then IIS will not have access to these ports. This can cause a 404 error when trying to access a web page hosted on the local server and may also generate errors when starting a website.

One remedy is to uninstall the application and verify that IIS is serving pages properly. The application can be reinstalled and will choose a different port if IIS is already using the common ports. However, note that some applications, like Skype, allow you to choose different ports to remedy this situation without removing the application.

DBXL WILL ASSUME SSL PORT NUMBER WHEN INSTALLING ON A SITE WITH HTTPS

If you install DBXL on a website configured to use https but later change the configuration to http and reinstall DBXL, you will receive the error *“Could not initialize the database”*. When you configure the web site to use https it stores the port number as 443. Then, when you remove the server certificate from the default website and reconfigure it to use http, it is not removing the SSL port number from that default website. To prevent this problem, you will have to remove the port number manually. In inetmgr, open the properties of the web site which was configured to use https and delete the SSL port number.

DBXL INSTALLER ENCOUNTERS 503 ERROR

When installing DBXL, you may encounter the following message: *“The installation failed, and the rollback has been performed -->Error initializing DBXL database. --> the request failed with HTTP status 503: Service unavailable.”* Should you come across this:

- 1) Make sure the App pool is not stopped. If it is stopped, there is likely a problem with the user account and password combination being used. You can try resetting it in the Identity tab of the app pool’s property page, then restart the app pool, and then try installation again.
- 2) Make sure that you installed to the correct site (and not a disabled site).
- 3) If using SharePoint 2007, make sure the Network Service account is in the WSS_WPG group.

IIS SITE CONFIGURED TO RUN AS 32 BIT MAY NOT WORK WITH DBXL 64 BIT

The Cablib.dll installed with the 64bit installer is for a 64bit environment. But it may be that an IIS site is configured to run as 32bit and thus fails to load the 64bit cablib.dll. If this is the case, please try installing the 32bit version of DBXL.

VIRTUAL DIRECTORY NOT CREATED DURING INSTALLATION



<http://www.qdabra.com>

Last updated on 1/5/2013 6:59 PM

Copyright © 2006-2012 Autonomy Systems, LLC. All rights reserved.

During installation, you may encounter the following error: "*The specified path '/LM/W3SVC/769376297/ROOT/QdabraWebService' is unavailable.*" This causes the installer to stop. A workaround is to click **OK** in the error dialog, then go to IIS Administration and create the virtual directory. The QdabraWebService folder should have been created under the website; right-click on it, select **Properties**, click **Create** and click **OK**. Then switch back to the installer and complete the installation.

SITE DROPDOWN DEFAULTS TO HTTPS

During installation the site dropdown will default to https on some environment, even if there is no SSL certificate installed. Change the dropdown to not use https if no certificate is configured; otherwise installation might fail.

NET FRAMEWORK ON 64BIT - CONNECTION CLOSED

The screenshot below shows an installation failure that may show itself due to a bug in the .NET 2.0 Framework on 64bit machines. The Crypto apis cause crashes when null (empty) string/byte arrays are passed into Convert.FromBase64String (or other Crypto apis). Problems like this may not be easily reproduced, as crashes may be exhibited differently depending on the machine. Should you encounter a similar issue, please contact us for assistance.



REINSTALLATION OF DBXL WILL NOT WORK IF APP POOL IS CHANGED TO INTEGRATED PIPELINE MODE

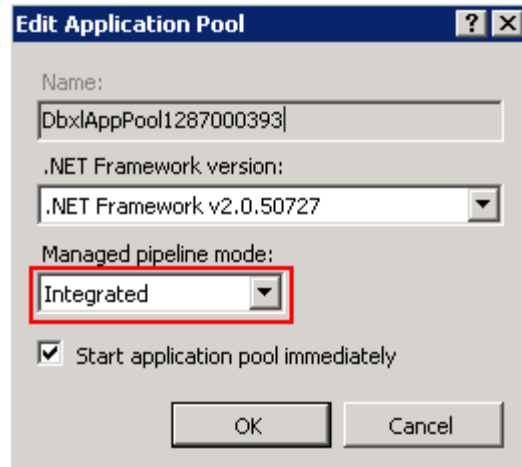
During installation of DBXL, the DBXL App Pool is set to Classic .NET App Pool by default. If later you change the DBXL App Pool to "Integrated" Pipeline mode to support SharePoint workflow, reinstallation of DBXL will not work.



<http://www.qdabra.com>

Last updated on 1/5/2013 6:59 PM

Copyright © 2006-2012 Autonomy Systems, LLC. All rights reserved.



To prevent this problem, you will have to delete the DBXL App Pool. In IIS, open the Application Pool and delete the DBXL App Pool from the list, and then re-run the installation.

DISABLE LOOPBACK CHECK TO COMPLETE INSTALLATION

On load balanced servers you might encounter an issue installation DBXL; this is an issue encountered for any web service, not just DBXL. The issue is well described in the following link:

<http://blog.crsw.com/2008/10/14/unauthorized-401-1-exception-calling-web-services-in-sharepoint/>. Microsoft Support also discusses the issue here: <http://support.microsoft.com/default.aspx?scid=kb;EN-US;896861>. To install DBXL,

- Add the DisableLoopbackCheck registry entry discussed in this Microsoft KB article. Note: you will need to reboot your server before the DisableLoopbackCheck takes effect.
- Be sure to add your load balanced host name for your web farm to the Hosts file on each front end web server. Use the loop-back IP address (127.0.0.1). This will ensure that each web server looks at itself to access the web services preventing any trips back out to the load-balancer – and possibly calling the web service another web server in the farm. This will be much less efficient.

If this problem appeared to be inconsistent (sometimes erroring, sometime successful), this is most likely due having multiple web servers. The call to the web service will be successful if by chance the load balance redirected the call to the same (self) web server to access the web service. It will fail when trying to call across to a different web server.

DBXL INHERITS MODULES FROM PARENT SITES

When installing DBXL Server edition, you may run into an error that begins with the following text:

```
Error bootstrapping system doctypes
Client found response content type of 'text/html; charset=utf-8', but expected 'text/xml'.
The request failed with the error message:
```



<http://www.qdabra.com>

Last updated on 1/5/2013 6:59 PM

Copyright © 2006-2012 Autonomy Systems, LLC. All rights reserved.

Please review the entire error recorded in the Event Viewer; it may mention of <httpModules>. If it does, it is likely that some SharePoint or web site add-on may not function properly with DBXL's application pool. These modules are inherited by the QdabraWebService from parent sites.

This can be easily resolved by specifying it be removed for the QdabraWebService virtual directory. You can edit the SharePoint web.config, in the parent folder of the QdabraWebService. Add the following section just before the </configuration> at the bottom of the web.config file.

```
<location path="QdabraWebService">
  <system.web>
    <httpModules>
      <remove name="<your_module_name_here" />
    </httpModules>
  </system.web>
</location>
```

DBXL inherits the web.config settings, and manual exclusion using the <location> node is the only way to exclude them without uninstalling them. Of course, the other option would be to uninstall the solution which had originally added the httpModule.

This could also happen with <httpHandlers>, in which case they can be excluded as show below:

```
<location path="QdabraWebService">
  <system.web>
    <httpHandlers>
      <clear />
      <add path="trace.axd" verb="*" type="System.Web.Handlers.TraceHandler" validate="True"
/>
      <add path="WebResource.axd" verb="GET"
type="System.Web.Handlers.AssemblyResourceLoader"
validate="True" />
    </httpHandlers>
  </system.web>
</location>
```

WINDOWS VISTA WITHOUT SP1 - QDABRA WEBDAV ROOT PROTOCOL HANDLER

You may have to install a special WebDAV protocol handler in the root web site to work around a bug in Windows Vista machines without SP1. This is because Windows Vista always queries the root web site regardless of where your installation lies.

1. Open inetmgr.exe and expand the Web site where DBXL is installed.
2. Right click on the QdabraWebService and select **Open**.
3. Open the bin folder.
4. Copy the Qdabra.Dbxl.WebDAV.dll from this folder.
5. Return to Internet Information Services, right click on the default Web site and select **Open**.
6. Open the bin folder.
7. Paste the Qdabra.Dbxl.WebDAV.dll into this folder.



<http://www.qdabra.com>

Last updated on 1/5/2013 6:59 PM

Copyright © 2006-2012 Autonomy Systems, LLC. All rights reserved.

8. Click **Start > Run** and enter cmd.exe.
9. Navigate to the bin folder where you copied Qdabra.Dbxl.WebDAV.dll.
10. Add the dll to the Global Assembly Cache for the local computer by following these steps:
 - a. Open **Control Panel** and click on **Administrative Tools**.
 - b. Double click **Microsoft .NET Framework 2.0 Configuration**.
 - c. Expand **My Computer** and click on **Assembly Cache**.
 - d. Click **Add an Assembly to the Assembly Cache** in the view.
 - e. In the dialog that pops up enter the path to the dll referenced in the above steps and click **OK**.

IIS IS IN 32 BIT MODE IN A 64 BIT MACHINE

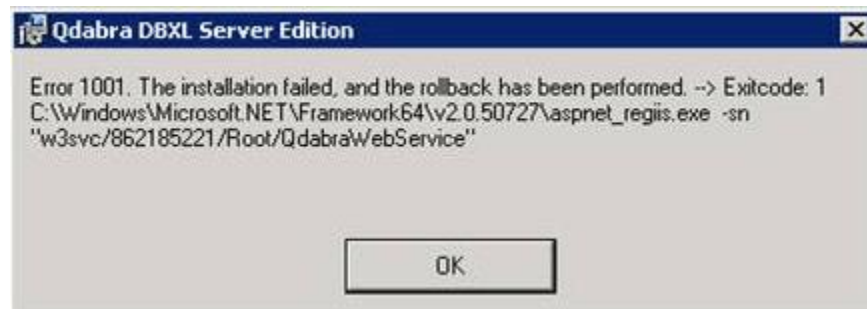
While installing DBXL, the following error might be recorded in the Event Viewer:

Failure registering DBXL with .NET v2.0.

Exitcode: 1

C:\Windows\Microsoft.NET\Framework64\v2.0.50727\aspnet_regiis.exe -sn "w3svc/862185221/Root/QdabraWebService" encountered a critical error and needs attention.

The installer should also stop and show the following dialog:



While the install error is still up, execute the aspnet_regiis -sn command:

> C:\Windows\Microsoft.NET\Framework64\v2.0.50727\aspnet_regiis.exe -sn "w3svc/862185221/Root/QdabraWebService"

You might see text similar to the following:

Start registering ASP.NET scriptmap (2.0.50727) at w3svc/862185221/Root/QdabraWebService. Error when validating the IIS path (w3svc/862185221/Root/QdabraWebService). Error code = 0x80040154

This error indicates that IIS is in 32 bit mode, though trying to run a 64 bit application. To solve this, refer to [http://technet.microsoft.com/en-us/library/aa996091\(v=exchg.80\).aspx](http://technet.microsoft.com/en-us/library/aa996091(v=exchg.80).aspx). This article will ask you to execute:

cscript c:\inetpub\adminscripts\adsutil.vbs SET /w3svc/AppPools/Enable32BitAppOnWin64 False

After running the cscript command, an iisreset, the DBXL installation should be successful.



<http://www.qdabra.com>

Last updated on 1/5/2013 6:59 PM

Copyright © 2006-2012 Autonomy Systems, LLC. All rights reserved.

DAT WILL NOT OPEN BECAUSE OF KERBEROS

When launching the DBXL Administration Tool you could get infinitely prompted, meaning that the login credentials are not being recognized. If your users encounter this issue, please check the following:

1. Open a command prompt,
2. Change to the folder `c:\inetpub\adminscripts\`
3. Run the following command

```
Cscript adsutil.vbs get w3svc/{WEBSITEID}/root/QdabraWebService/NTAuthenticationProviders
```

If the authentication method displayed is "Negotiate", then this tells us that Kerberos is enabled. If Kerberos is enabled on the site, you can do one of the following:

- a. Change the DBXL app pool in IIS to use the same identity as the SharePoint app pool .
- b. Disable Kerberos on the QdabraWebServiceFolder
 - `Cd C:\inetpub\adminscripts\`
 - `cscript adsutil.vbs set w3svc/3/root/QdabraWebService/NTAuthenticationProviders "NTLM"`

You should recycle the DBXL app pool after either of these two options.



STANDALONE INSTALLATION

STOP THE SERVICE BEFORE UNINSTALLING

Before uninstalling the DBXL Client (for example, to reinstall), you should STOP the service. This can be via the Control Panel > Administrative Tools > Services.

STANDALONE EDITION INSTALLATION ERRORS DUE TO SERVICE

If you uninstall DBXL Standalone Edition while the Standalone service is running, you'll get a prompt to select between **TRY AGAIN**, **CONTINUE** and **EXIT**. Please click **Continue** to finish installation. You can stop the service manually before uninstalling if you wish to avoid the prompt.

Sometimes the uninstaller is unable to delete the service. In this situation, please run a command line as an administrator, and then execute: **SC DELETE "Qdabra DBXL Standalone Edition"**. Once the service has been deleted, you may need to restart your machine before trying to reinstall DBXL.

INSTALLATION ERROR WHEN NETWORK SERVICE ACCOUNT LACKS PERMISSIONS

When installing DBXL Client on Windows 7, you might run into an installation failure with an error that reads: **"Failure registering DBXL Standalone dashboard. The remote server returned an error: (404) Not Found. encountered a critical error and needs attention."**

In the eventvwr, you might find a sequence of errors concerning the system document types:

```
Error deploying sample 'QdUser' encountered a critical error and needs attention:
System.Exception: Web method returned error: 10033: Access denied
at Qdabra.Util.SampleDeployer.ParseResponseForErrors(XmlDocument responseDoc)
at Qdabra.Util.SampleDeployer.DeployMapping()
at Qdabra.Util.SampleDeployer.DeployAllSamples()
The stack trace was: at Qdabra.Util.SampleDeployer.ParseResponseForErrors(XmlDocument
responseDoc)
at Qdabra.Util.SampleDeployer.DeployMapping()
at Qdabra.Util.SampleDeployer.DeployAllSamples().
```

The eventvwr might also have a failure installing the DBXL license:

```
Error loading trial license
Access denied encountered a critical error and needs attention.
```

One possible reason for this installation failure is that the Network Service account does not have permission on the %windir%\TEMP folder. Grant it full control and install should succeed.

Note that some machines will require a restart after granting these permissions.

STANDALONE EDITION CONFIGURATION FILE



<http://www.qdabra.com>

Last updated on 1/5/2013 6:59 PM

Copyright © 2006-2012 Autonomy Systems, LLC. All rights reserved.

The Client version of DBXL does not use a file called web.config for its configuration. Error messages produced by certain web services, such as QueryDB, may point to **web.config**. To address the issues, please modify the configuration file **Qdabra.Dbxl.Standalone.exe.config** instead of web.config.

STANDALONE DBXL SERVICE ALREADY EXISTS WHEN REINSTALLING

When reinstalling DBXL on your local (client) machine, you might be informed that the DBXL service already exists. Should this happen, launch a command line window and execute *sc DELETE "Qdabra DBXL Standalone Edition"*. Once deleted, you'll be able to reinstall DBXL on your client machine.

DETERMINE THE DBXL PORT NUMBER

If you need to determine the port number that the DBXL Client was installed on, you can look at the config file located here:

C:\Program Files\Qdabra Software\Qdabra DBXL Standalone Edition\Qdabra.Dbxl.Standalone.exe.config

Or on 64-bit

C:\Program Files (x86)\Qdabra Software\Qdabra DBXL Standalone Edition\Qdabra.Dbxl.Standalone.exe.config

```
<services>
  <service name="Qdabra.Dbxl.Implementation.DocumentRetrieval.RequestHandlerRouter">
    <host>
      <baseAddresses>
        <add baseAddress="http://localhost:8000/QdabraWebService" />
      </baseAddresses>
    </host>
  </service>
</services>
```



SQL-SPECIFIC INSTALLATION ISSUES

DATABASE NAMES CANNOT CONTAIN SPACES

Installation of DBXL will fail and produce an error message when the database name entered contains a space. By default, the database names are QdabraDBXL and QdabraSamples. You may change these, but you must use a database names that do not contain spaces.

ASP.NET MUST HAVE PERMISSIONS ON THE SQL DATABASE

When installing DBXL on a Windows XP Professional machine, ASP.NET must have permissions on the SQL database. This is necessary in order to allow the installer to correctly configure and use the Qdabra Sample forms and database, which include workflow, category filtering and notifications.

INSTALLATION FAILS DUE TO SQL CONNECTION REFUSED

If the DBXL install fails because the SQL connection was refused, it could be that the SQL Server is too busy to handle the connection. The installer attempts to determine if SharePoint is installed, which can result in the SharePoint site being started if it isn't already running. Depending on your system resources, the startup of SharePoint may prevent SQL Server from having resources to handle additional connections. The workaround is to ensure that the SharePoint site has been pre-loaded on the system before continuing the installation. The steps are as follows:

1. Start the DBXL installer and proceed to the setup dialog with the tabbed pages.
2. Using Internet Explorer, navigate the homepage of the website that DBXL is being installed.
3. If the site shows an 'Cannot complete this action' error, wait a minute and click the 'Go back to site' link (or re-enter the SharePoint home page url). Repeat until the home page displays correctly.
4. Once the page displays correct, proceeded to finish the DBXL install.

SQL FULL TEXT SEARCH

In some SQL 2008 installations, the full text search option may not be checked by default. In order for all of DBXL's search capabilities to work, you will need to make sure that the full text search option in SQL is installed. Otherwise, DBXL installation will continue, but DBXL will not have access to full text search.

SQL SETUP PRODUCES A RED FLAG ON ENVIRONMENT CHECK

On IIS 7, users may find running a web setup MSI on a Windows Vista machine may not generate any useful error messages. To remedy this, uninstall SQL and then make sure that all the IIS features are turned on. Then you can reinstall SQL, making sure that there are no red flags on environment check.

SQL CONNECTION ERROR CONCERNING THE SHARED MEMORY PROVIDER



<http://www.qdabra.com>

Last updated on 1/5/2013 6:59 PM

Copyright © 2006-2012 Autonomy Systems, LLC. All rights reserved.

During installation of DBXL you might encounter an error that reads: *The installation failed, and the rollback has been performed. Error initializing DBXL database. Cannot initialize database 'QdabraDBXL' on server '<servername>'. See eventlog for details.* In Event Viewer, the details of this error read: *Shared Memory Provider, error: 0 - No process is on the other end of the pipe.* The workaround requires disabling the shared memory protocol for SQL Server using the configuration tool. Note that this error should only take place when SQL server and DBXL are on the same machine.

SQL DEFAULT DATABASE NOT SET

After restarting SQL Server and/or IIS, you might encounter an error that reads "*Shared Memory Provider, error: 0 - No process is on the other end of the pipe*". Log into SQL Server under another admin login and check the properties stored for the usual login account. If you find that the default database is not set, reset the default database and then log in under the usual login account.

BEST PRACTICE FOR DATABASE REDUNDANCY WITH DBXL

Large enterprises generally have redundancy mechanisms in place for critical SQL databases and are managed by an IT staff. For those without the large IT staff to manage your systems, you may still need something more than nightly backups. For high-availability without high cost, SQL Server 2005 Standard and Enterprise Edition introduced database mirroring support. Using a passive SQL Server to mirror the DBXL database, you can obtain high-availability without the need for an additional SQL Server license. The SQL instance can be on an existing or new server (including VMs) with sufficient resources to host the database. Just remember when using VMs, that failovers should reside on different physical hosts. For additional information, refer to SQL Server 2005 Books Online topic "[Overview of Database Mirroring](#)".

SQL Server 2005 Workgroup does not support database mirroring but does support transaction log shipping, which is similar to asynchronous database mirroring. For additional information, refer to SQL Server 2005 Books Online topic "[Understanding Log Shipping](#)".

Additional licensing information can be obtained [here](#).

"CANNOT GENERATE SSPI CONTEXT"

When working with DBXL and other applications, you need SQL. Some organizations deal with multiple SQL instances and this can create a problem if some SQL instances are on different domains. When we attempt to connect an SQL instance using SQL Server Management Studio, we might encounter an error that reads: 'Cannot generate SSPI context'. Here's a workaround if you find yourself in a similar situation:

1. Launch command prompt (cmd).
2. Use "runas" to launch SQL Server Management Studio. Specifying the userdomain\useralias of the account user.
3. For SQL Server 2008 Management Studio, the command will be similar to this:



```
runas /netonly /user:userdomain\useralias "C:\Program Files\Microsoft SQL
Server\100\Tools\Binn\VSShell\Common7\IDE\Ssms.exe"
```

For Microsoft SQL Server Management Studio 2005, you'll use this:

```
runas /netonly /user:userdomain\useralias "C:\Program Files\Microsoft SQL
Server\90\Tools\Binn\VSShell\Common7\IDE\Ssms.exe"
```

This should work on Vista, Windows 7 and Windows Server 2008, but has not been tested with 2003 or XP.

CHANGING THE DBXL DATABASE CONNECTION STRING AFTER INSTALLATION

If you change the ConnectionString in DBXL's web.config file such that it references a different database after installation, you must invoke InitializeDatabase to update the database schema. You can call the method by using Internet Explorer to navigate to <http://<servername>/QdabraWebService/DbxlAdmin.aspx>, click InitializeDatabase and click *Invoke*.

MOVING THE DATABASES USED BY DBXL

1. Move of QdabraDBXL and QdabraUtility databases (where database name IS NOT changed)
 - a. Update the web.config to point to the new database server
 - b. Grant the DBXL account access to the QdabraDBXL and QdabraUtility databases.
 - i. If using Network Service, it will be DOMAIN\DBXLSERVERNAME\$
 - ii. If using Domain account, use domain\useralias
 - c. If Shredding databases are moved to same server as QdabraDBXL/QdabraUtility:
 - i. If using Network Service, it will be DOMAIN\DBXLSERVERNAME\$
 - ii. If using Domain account, use domain\useralias
 - d. Update mapping for each doctype to change Data Source of the shredding data connection.
2. Move of QdabraDBXL and QdabraSamples databases (where database name IS changed) *IMPORTANT: There are QdabraDBXL database references in the QdabraUtility database. The only way to fix these is to reinstall DBXL using existing databases. Since the installer script does not drop and recreate, we will need to update DBXL scripts to drop first and recreate.*
 - a. Uninstall DBXL
 - b. Restore databases to new server
 - c. Install DBXL using existing databases
 - d. Update mapping for each doctype to change Data Source of the shredding data connection.
 - e. Grant reader/writer access to shredding databases for DBXL service account
 - i. If using Network Service, it will be DOMAIN\DBXLSERVERNAME\$
 - ii. If using Domain account, use domain\useralias
3. Moving DBXL front end
 - a. Move databases per steps in #1
 - b. Reinstall DBXL on new server, pointing to existing databases.
 - c. All doctypes will need to be resaved to fixup the xsn references. To do this simply click Edit then Save for each Document Type.



UPGRADING AND MIGRATION

OFFICE 2013 AND FULL TRUST FORMS

Customers who choose to upgrade to Office 2013 must reinstall full trust forms after the upgrade. Examples of these full trust forms include the DBXL Standalone Dashboard, QueryBuilder and ReportBuilder.

To reinstall these full trust forms, you can use Qdabra's [FormsInstaller](#). The [instructions for installing QueryBuilder](#) apply for other Qdabra forms.

ReportBuilder is available [here](#).

The DBXL Standalone Dashboard is available on the machine where DBXL was installed, in this path: *C:\Program Files (x86)\Qdabra Software\Qdabra DBXL Standalone Edition*

INSTALLING DBXL SIMULTANEOUSLY WITH A PREVIOUS VERSION

If a previous version of DBXL is already installed, you must create a new directory and select it when installing DBXL v2.6. You must also specify different names for the databases DBXL will create during installation. These values default to QdabraDBXL and QdabraUtilities; you could change them to QdabraDBXLv26 and QdabraUtilitiesv26 to avoid conflicts.

SHAREPOINT MAPPINGS AFTER UPGRADING DBXL

This applies to users that have an existing SharePoint mapping with a previous version of DBXL. SharePoint mapping has been updated to use the DBXL::Name token at the Title in SharePoint. If no DBXL::Name token is declared, then DBXL will use the DocID. In addition, DBXL will promote some additional columns. After upgrading DBXL, verify that open and submit works for existing documents without issues, then perform a Reshred All to update to the new promoted columns.

INFOPATH RETAINS PREVIOUSLY CACHED DAT AFTER UPGRADING DBXL

After upgrading DBXL, InfoPath could retain the cached version of the Administration Tool (DAT). To fix this, there are three cache locations we must clear. First, clear the InfoPath cache by running *Infopath /cache clearall* from a command line prompt. Second, run: *rmdir /s /q C:\Users\<username>\AppData\Local\Microsoft\InfoPath\FormCache2* (which is the path for InfoPath's cache folder and it may vary depending on your machine and OS). Finally, clear your cache in Internet Explorer.

IMPORTING DOCUMENTS WITH THEIR REFIDS INTACT

The ImportDocuments method allows the user to import documents with their RefID intact. To do this, a data connection to the service must be manually created, with the importExistingRefId parameter set to "true". The Document Type's "XPath to inject RefId to" field must be filled out with an appropriate XPath. Note that once the RefID XPath has been established, changing it will break previously submitted documents.



PERMISSIONS

USING NON-DEFAULT VALUES FOR PERMISSIONS PREVENTS DAT INSTALLATION

During installation of DBXL you may receive the error "*Error publishing Admin Tool: Access Denied*". This could be the result of using non-default values in the Permissions tab during installation. To complete installation, publish DAT manually. Log in to the server where DBXL was installed and navigate to the default.asmx page. Click on the DBXLAdmin web service and then invoke the "PublishDATFormTemplate" web method.

USERS MUST HAVE READ PERMISSIONS FOR THE DOCUMENT TYPE

The QueryDocuments web method requires Document Type Level *Read* permissions. If a user only has Document-Level *Read* permissions, the QueryDocuments web method will return the error "*Access Denied*". This limitation will be addressed in a future version of DBXL.

CHANGING DOCUMENT LEVEL PERMISSIONS REQUIRES RESHREDDING

If you add or change Document Level permissions for a configuration in DAT, the new permissions schema will not be enforced for documents that were created previous to the change. Please reshred documents to update existing documents.

L-READ DOCTYPE LEVEL PERMISSIONS AREN'T IMPLEMENTED

The L-Read checkbox in DAT's Permissions view is reserved for future use. Please use L-Write if you wish you assign *Lock* permission to a user.

ADD PERMISSIONS TO THE QDABRAWEBSERVICE FOLDER

Typically it is sufficient to add admin users to the DbxlAdminAlias and the AdminGroupAlias as specified in the web.config file. This grants admin permissions to the members of those groups. However, if you find that your users need additional permissions to access the DBXL web service, we recommend adding permissions to the QdabraWebService folder instead of adding the users to the WSS_WPG group.



DBXL ADMINISTRATION TOOL (DAT)

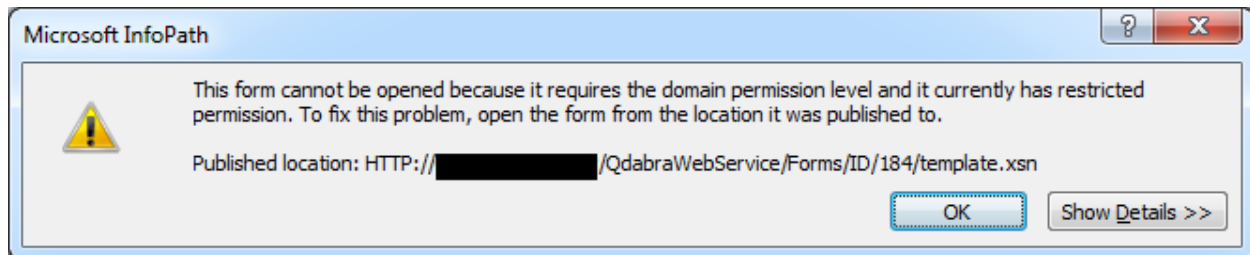
ISSUES OPENING DAT WHEN USING INFOPATH 2010

If you encounter issues when opening DAT, especially when using InfoPath 2010, please try the following steps:

1. In the default page (<http://<servername>/QdabraWebService>) right click on the link to open the DBXL Administration Tool (DAT) and copy the URL. Then paste the URL directly into the address bar in Internet Explorer and hit Enter.
2. Close all Internet Explorer and InfoPath instances, and then clear the machine's InfoPath cache. Then try to open DAT again.

INFOPATH 2010 FAILS TO UPDATE DAT DUE TO CACHING ISSUE

If you are using Database Accelerator (DBXL) with InfoPath 2010, you might encounter an issue when opening the DBXL Administration tool (DAT).



This appears to be a caching issue in InfoPath 2010, due to the fact that InfoPath 2010 doesn't automatically attempt to get an update for the form. This only happens if you had a previous version of DBXL installed. The workaround is relatively simple:

1. Close all InfoPath instances, and verify that the InfoPath process is not running.
 - a. Right click on the task bar and select **Start Task Manager**.
 - b. Click on the **Processes** tabs and click on the Image name header to sort the processes.
 - c. Look for InfoPath.exe.
 - d. If it exists, select it and click **End Process**.
2. Open InfoPath.
3. In the **File** tab select **New**. You will see the DBXL Admin Tool listed under **Qdabra Tools**.

Note: If you don't see DAT in the list of available forms, open Internet Explorer and go to the DBXL page: <http://<servername>/qdabrawebservice>, and then click on the DBXL Administration Tool link. The error dialog might still appear; close it. When you re-open InfoPath, you should now see DAT in the list.

4. Right-click on the form and select 'Get update of this form'.
5. Close InfoPath filler.
6. Try to launch DAT again.

DAT will update and InfoPath should no longer display errors whenever you click on the link in the DBXL page or open from your available InfoPath forms.



DAT OPENS BUT NO DOCUMENT TYPES ARE SHOWN

With Windows 7, Vista and Windows Server 2008, UAC (User Account Control) is in effect by default. You must run IE as an Administrator, or create a security group and add yourself and then change the web.config to use that group instead of BUILTIN\Administrators. Here are the steps for both options:

- Open DAT in Internet Explorer as Administrator:
 1. Right click on Internet Explorer, and select **Run as administrator**.
 2. Enter url: *http://<servername>/QdabraWebService/default.htm*
 3. Click the link for the DBXL Administration Tool.
- Create a DBXLAdmins group and use it in place of the BUILTIN\Administrators group:
 1. Go to **Start > Administrative Tools > Computer Management**.
 2. Expand **Local Users and Groups**.
 3. Right click **Groups**, and then select **New Group**.
 4. Enter "DBXLAdmin" into the field **Group name**.
 5. Click **Add**, and enter your alias, Built-in Administrator, and others (if needed). Use **Check Names** as you add each one. Then click **OK**.
 6. Click **Create**.
 7. Close all InfoPath instances.
 8. Open DBXL's web.config file (i.e. *\inetpub\wwwroot\QdabraWebService\web.config*) as administrator.
 9. Change the line `<add key="DbxlAdminAlias" value="BUILTIN\Administrators" />` to `<add key="DbxlAdminAlias" value="machinename\DBXLAdmin" />`.
 10. Save and close web.config.

DAT WILL NOT OPEN DIRECTLY VIA HTTPS

After installing DBXL, the default web page should load in Internet Explorer. If you click on the DAT link and do not see an **Open** button in the dialog, please click **Save** and store the XSN on your desktop. You will be able open DAT from your desktop by double-clicking the saved file. This scenario should only happen when using HTTPS.

DO NOT INCLUDE SPECIAL CHARACTERS IN DOCUMENT TYPE NAME



<http://www.qdabra.com>

Last updated on 1/5/2013 6:59 PM

Copyright © 2006-2012 Autonomy Systems, LLC. All rights reserved.

If the name of your Document Type contains special characters (for example: !@#%\$^&*) you will experience problems opening it. To workaround this limitation, please use a Document Type name that does not include special characters.

CANNOT REMOVE DOCUMENT TYPES THAT CONTAIN RESOURCES

After using the DbxlResource web service to create a new xml resource, you will receive an error if you attempt to delete the Document Type Configuration for which you have created the Resource. Before deleting such a Document Type, you must first delete the resource itself using the DeleteResource operation in DbxlResource.

CHANGING PROMOTED PROPERTIES IN A FORM DOES NOT AFFECT EXISTING DOCUMENTS

Promoting properties in a form changes its xml contents. If the promoted properties were changed in a form template that was already published to DBXL, previously submitted documents will not automatically contain the xml changes, thus causing issues to some features that depend on promoted properties (i.e. Search Web Part, SharePoint mappings, etc.). Reshredding the documents in DBXL will update the promoted properties for the previously submitted documents.

SUBMIT WEB SERVICE MAY PRODUCE A TIMEOUT ERROR

When a Document Type has complex Database/SharePoint mappings, the user may see a timeout, even though the document is correctly submitted to DBXL and to the configured mappings. You may also encounter an error when retrieving a large dataset using QueryDB. This happens because InfoPath has a default of 30 seconds for web service timeouts. A workaround involves [using form code to extend the timeout](#) and thus prevent the client-side error.

ENABLE HISTORY IN DAT

Starting in DBXL v2.4, DAT has been modified to have **Enable History** checked and disabled for new document types:

The screenshot shows the 'Database Accelerator Administration Tool' interface. At the top, it says 'Database Accelerator Administration Tool' and 'Document Type: TestForm2'. Below this are several tabs: 'General', 'Database', 'Permissions', 'SharePoint', and 'Documents'. The 'Database' tab is selected. Underneath, there are sections for 'Database Configuration' and 'Submit Options'. In the 'Submit Options' section, there are two checkboxes: 'Enable History' (which is checked and highlighted with a blue box) and 'Report Shredding Errors to the Form User' (which is also checked).



This is designed for standalone and side-by-side to automatically detect form versions. The checkbox becomes editable again in DBXL v2.7. If the checkbox shows as read only and you wish to disable this, please follow [these steps](#) to uncheck it.

ADMIN-DEPLOYED, FULL TRUST TEMPLATES REQUIRE ADDITIONAL PERMISSIONS

In some scenarios, you may have a full trust, admin-deployed content type, in use by DBXL. In this scenario, the DBXL app pool account needs additional permissions to allow integration with SharePoint using the Object Model method.

- **SharePoint Site:** Minimum Read Permission
- **Sharepoint Server:** Add to WSS_ADMIN_WPG group
- **Database:**
 - Sharepoint Content DB (Site collection database) - db_owner permission
 - Sharepoint Config DB (Config DB of sharepoint installation) - db_owner permission

PUBLISH DAT MANUALLY

A situation may arise that will require you to setup DAT manually. For example:

- You change the hostname used to access the website.
- If you are using Windows Vista or Windows Server 2008, User Account Control may prevent the user from being seen as an Administrator and DAT will not be automatically configured during installation. To complete installation, publish DAT manually, as explained below. (The alternative is to perform a clean installation, making sure that setup is *Run as Administrator*.)
- During installation of DBXL you receive the error "*Error publishing Admin Tool: Access Denied*". This could be the result of using non-default values in the Permissions tab during installation. To complete installation, publish DAT manually, as explained below. The alternative is to perform a clean installation, making sure to keep the default values in the Security tab during setup.

To setup DAT manually, follow these steps:

1. Log in to the server where DBXL is installed.
2. Open the following URL in IE: <http://<servername>/QdabraWebService/DbxlAdmin.aspx> (If on Windows Vista or Windows Server 2008, run Internet Explorer as Administrator.)
3. Click on the **PublishDATFormTemplate** method.
4. Enter the path of the DAT-Template form, which is saved to the local drive. In a non-SharePoint default installation, the path will be *C:\inetpub\wwwroot\QdabraWebService\install\DAT-template.xsn*.
5. Call **PublishDATFormTemplate** method by clicking on **Invoke** button.

If you have already created Document Types, you must execute two additional steps after calling **PublishDATFormTemplate**.

6. Open DAT.
7. Click **Edit** and **Save** for all your Document Types.



RENAMING A DOCUMENT TYPE

Currently there isn't a way to change a document type's actual name via the DBXL Admin Tool's UI. It would typically be inadvisable to do so. A document type's Friendly Name, on the other hand, is designed to be changeable and in cases such as QdFlow e-mail notifications, it is the Friendly Name that matters. The steps to manually change the Friendly Name are:

1. Export the Document Type configuration using the DBXL Migration Tool.
2. Modify the exported XML to change the FriendlyName field value. This can be done in a text editor such as Notepad.
3. Re-import the configuration.

INDEXING FEATURES ON THE GENERAL TAB IN DAT

The General tab in DAT contains two features that allow DBXL to index its documents.



Indexes	
Name	XPath
<input type="button" value="Insert index"/>	

The XPath index is for use with the QueryDocuments() method and this has been available in versions previous to DBXL v2.7.

Enable Xml Indexes (requires extra storage space)

In DBXL v2.7, a new checkbox is intended to specifically speed up data connections that call QueryDocumentNodeSets(). Note that enabling XML indexes increases the space occupied in the database, but improves performance, especially for large XML documents.



SHAREPOINT INTEGRATION

SHAREPOINT SITE IS NOT BROWSEABLE ON THE SERVER

If the SharePoint site is not browseable on the server where DBXL is installed, you will encounter issues with the DBXL-SharePoint integration. On some servers, you will not even be able to install DBXL. On some servers, you'll encounter a variety of errors when integrating DBXL and SharePoint. To avoid this, we recommend that you check whether the SharePoint site is browseable on the server. If it is not, please read the following Microsoft KB article to resolve the issue. <http://support.microsoft.com/kb/896861>

SHAREPOINT OPERATIONS CAN CHANGE THE DBXL APPLICATION POOL

Changing the SharePoint authentication provider may change the DBXL application pool, therefore "breaking" DBXL and producing the following error.

Server Error in '/QdabraWebService' Application.

Request is not available in this context

Description: An unhandled exception occurred during the execution of the current web request. Please review the stack trace for more information about the error and where it originated in the code.

Exception Details: System.Web.HttpException: Request is not available in this context

For example, you may change the Authentication Provider for the default zone via Central Admin (Application Management – Manage Web Applications), from NTLM to Negotiate. Every time you do this, the QdabraWebService virtual directory changes to use the same application pool as the parent site.

USING THE SEARCH WEB PART WITH SHAREPOINT DESIGNER

If you use SharePoint Designer to modify a page that contains the Search web part, the web part will become broken and unusable; you will have to delete and recreate it. However, if the web part is initially added via the SharePoint Designer, it can be edited there.

ENCODING CHANGE FOR PROMOTED PROPERTIES AFFECTS DATA VIEWS

In DBXL v2.4, the encoding of promoted properties was changed. This affects users of SharePoint web parts that make use of promoted properties that contain spaces. Therefore, all data views using GetMyListItems or GetListItems that have promoted properties containing spaces will no longer have the _x005F in the name. For example, 'Status Code', which was 'Status_x005F_x0020_Code' is now 'Status_x0020_Code'.



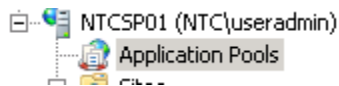
SHAREPOINT MAPPINGS

ERRORS ENCOUNTERED WHEN CREATING SHAREPOINT MAPPING

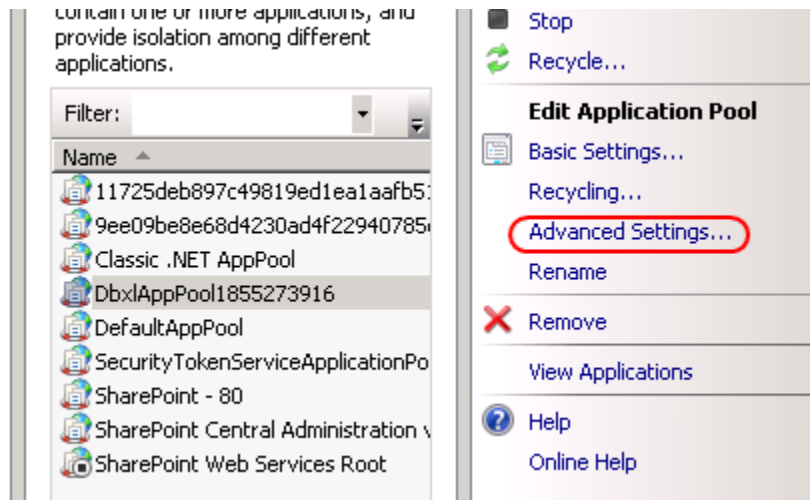
If you plan on using DBXL to create SharePoint mappings, we recommend installing DBXL to use the same account as the SharePoint App Pool. If DBXL is not using the same account as the SharePoint App Pool, you might get an error when creating the SharePoint mapping in DAT: ***“An unhandled exception occurred while calling the SetDocumentType method. S002: Caught exception ensuring SharePoint form library <URL>. The Web application at <URL> could not be found. Verify that you have typed the URL correctly. If the URL should be serving existing content, the system administrator may need to add a new request URL mapping to the intended application.”***

To fix this, follow these steps:

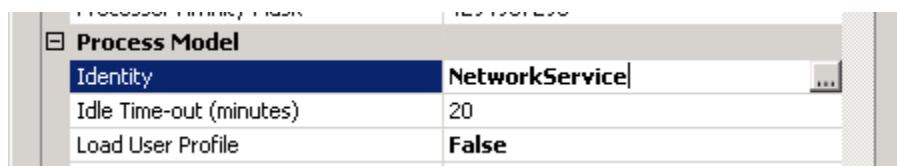
1. Open IIS, and select Application pools:



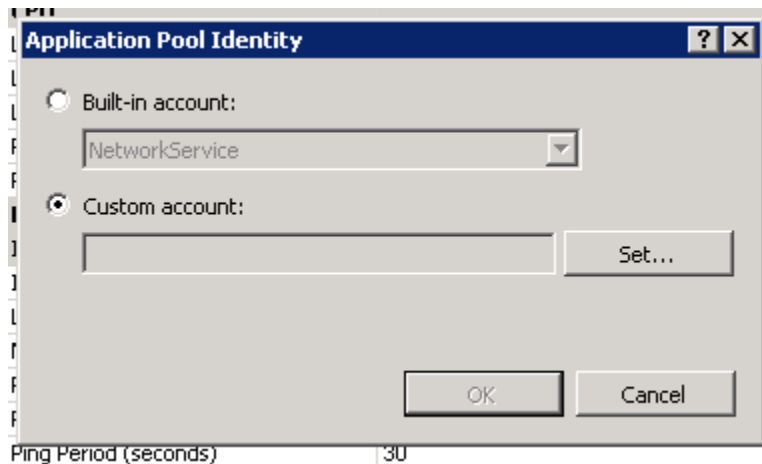
2. Make a note of the identity being used by the SharePoint App Pool.
3. Give this identity read and write permissions (db_datareader and db_datawriter) to DBXL databases (QdabraDBXL and QdabraUtility), and any database doctypes are shredding to.
4. Select the DBXL app pool, and Advanced Settings:



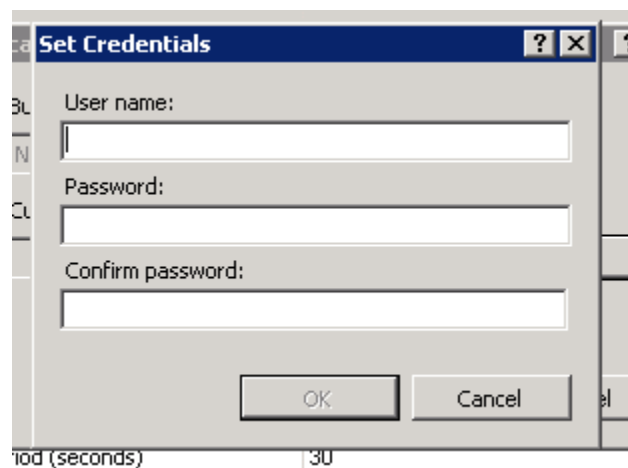
5. Under Identity, click the ... button:



6. Select Custom account and click Set:



7. Enter username and password (the same user the ShP App Pool runs under) and click OK to close all dialogs.



After following these steps, try to add your SharePoint mapping once again.

ERRORS ENCOUNTERED WHEN CREATING SHAREPOINT MAPPING FOR A FORM WITH CODE

DBXL allows you to create a SharePoint mapping for your DBXL Document Types. However, if your form has code, you may encounter errors if you try to use the "Publish Library and XSN" checkbox available in the SharePoint tab. These errors will cause the form in SharePoint and the form in DBXL to be out of sync, and the same will happen for documents that you submit. If your solution has code, please follow the steps detailed [here](#) and [here](#).

CANNOT WRITE TO EVENT VIEWER

While working in DBXL you may encounter the following error: ***"Caught exception ensuring SharePoint form library <URL>. Cannot open log for source 'Database Accelerator'. You may not have write access."*** The problem is that an event is being written while still impersonating the caller. Since the caller does not have



<http://www.qdabra.com>

Last updated on 1/5/2013 6:59 PM

Copyright © 2006-2012 Autonomy Systems, LLC. All rights reserved.

permission to write events to the Qdabra eventlog, this error is shown. The workaround is to grant rights to everyone to write events to the Qdabra log. To do this:

1. Run regedit.exe.
2. Navigate to HKEY_LOCAL_MACHINE\SYSTEM\CurrentControlSet\Services\EventLog\Qdabra
3. Right-click the Qdabra node.
4. Select Permissions
5. Give Authenticated Users full permission (or grant the DBXL Admins group full permission).

This will allow the actual error causing the error to be written to the eventlog and reported back to the user.

UNCHECK THE “PUBLISH LIBRARY AND XSN” CHECKBOX TO IMPROVE DAT PERFORMANCE

The “Publish Library and XSN” checkbox only needs to be checked when you first publish your InfoPath form template to SharePoint or when your InfoPath form changes. To help performance, uncheck the checkbox until your form changes. When it does, the form needs to be re-published to SharePoint by checking the “Publish Library and XSN” and saving the Document Type.

PROMOTED FIELDS NAMED “DESCRIPTION” DO NOT GET DISPLAYED BY SHAREPOINT

If you promote a field in your form as “Description”, the SharePoint form library will not display the column, even though it seems configured properly in both SharePoint and InfoPath. As a workaround, when you promote that field, name it something other than “Description”.

ALL MAPPING INFORMATION IS DESTROYED WHEN SHAREPOINT MAPPING IS DELETED

Removing a Document Type’s SharePoint mapping destroys the information about the relationship between the DBXL document and the SharePoint item. Therefore, once a mapping is deleted from the SharePoint tab in DAT, you will need to delete and recreate the SharePoint library, and then reshred all your documents.

DOCUMENT IMPORT FAILS FOR DOCUMENT TYPES WITH SHAREPOINT MAPPING

DAT allows you to import xml documents into any Document Type. However, if the target Document Type possesses a mapping to a SharePoint library, you will encounter timeout errors, even with a small quantity of documents. Instead, we recommend the following:

1. Remove SharePoint mapping in DAT.
2. In SharePoint, delete the library.
3. Import documents using the Documents tab.
4. Use Publish XSN checkbox to recreate the library and the mapping.
5. Reshred all so that documents are remapped into SharePoint.

If you are importing a large quantity of documents (in the order of hundreds), please use our Document Deployer tool.

DBXL::NAME MUST BE UNIQUE



<http://www.qdabra.com>

Last updated on 1/5/2013 6:59 PM

Copyright © 2006-2012 Autonomy Systems, LLC. All rights reserved.

Starting in DBXL v2.5, the web service expects the DBXL::Name token to be unique. This value is used as the title in the SharePoint mapping. If the value of DBXL::Name is blank, the web service will use ({DOCID}), and if there are duplicates in the DBXL::Name, the web service will append the DOCID to distinguish between them.

Starting in DBXL v2.7, you can add a setting in web.config to modify the way DBXL maps XML forms to SharePoint. If the key is set to true, the DBXL::Name is ignored and the DocID is used instead. This is not, by default, included in DBXL's web.config and must be manually added above the closing appSettings tag.

```
<add key="UseDocIdForSharePointFileName" value="true" />
<add key="UseDocIdForSharePointFileName-YourDocTypeNameHere" value="true" />
```

USE A DBXL LINK TO OPEN DOCUMENTS FROM SHAREPOINT

If you have a SharePoint mapping, DBXL adds a linked column to the Form Library where the Document Type is mapped. The column is called **"Name (linked to document with edit menu)"**.

The URL used for this column is *http://<servername>/<FormLibraryName>/<DBXL::Name>.xml* or *http://<servername>/<FormLibraryName>/<DBXL::DocID>.xml* (see the release note above). This is the link to the XML as stored by SharePoint. Using this is REQUIRED if opening the form in the browser.

However, there is a second column added to the Form Library but not added to the default view. This column is called **"Name (linked to document)"** and uses the link *http://<servername>/QdabraWebService/Documents/<DocID>/<DBXL::Name>.xml*. This is the link to the XML stored within DBXL.

This is a useful workaround for scenarios where the user is allowed to move or delete the document from SharePoint. If you open a document using the SharePoint link, SharePoint puts a lock on the document. For updating, this usually works, because the person updating it is the one who has it locked. But when a conditional SharePoint mapping causes the document to be moved to a different library, it must be able to delete the document the user has open. Opening using the DBXL link prevents the lock and allows the deletion of the document from SharePoint.

DAT DOES NOT VALIDATE CONDITIONAL MAPPING EXPRESSIONS

If you add a conditional mapping in DAT's SharePoint tab, the expression is not validated by DAT. Please make sure that you are using a valid expression (xpath, operator and value).

FORM VERSION CONFLICT WHEN PUBLISHING TO SHAREPOINT FROM INFOPATH

When mapping DBXL Document Types to SharePoint, we recommend using the "Publish Library and XSN" checkbox. There are times when you may need to publish your InfoPath form template directly to SharePoint. In this situation, care should be taken to ensure synchronization between the form version numbers in DBXL and the SharePoint Form Library. To maintain this consistency, you must use the form template stored in the SharePoint Form Library when creating the new Document Type. Simply enter the URL *http://<servername>/<yourformlibrary>/forms/template.xsn* when creating the Document Type in DAT.

DOCTYPE DETERMINATION DOES NOT WORK WITH RECEIVE-TYPE DATA CONNECTIONS



<http://www.qdabra.com>

Last updated on 1/5/2013 6:59 PM

Copyright © 2006-2012 Autonomy Systems, LLC. All rights reserved.

DBXL includes two checkboxes, labeled "Publish form and XSN" and "Use Forms Services", in the SharePoint tab in DAT. These allow you to publish your form template to a SharePoint Form Library and IPFS-enable it. When doing this, DBXL attempts to automatically determine the DocType name on every submit. This only works for Submit-type data connections, and fails for Receive-type data connections.

WORKFLOW WILL NOT START AFTER DOCUMENT UPDATE

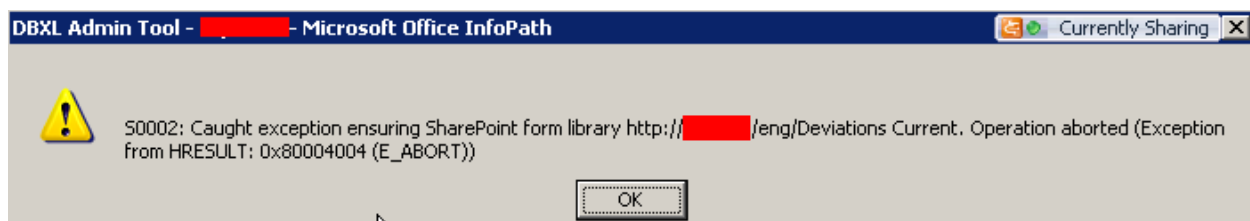
When you set up SharePoint workflow and select "Start this workflow when an item is changed", you might see that the workflow status is not updated in the SharePoint library's main page, even if the document has already been updated from DBXL. You can verify the status by clicking on the document in SharePoint and selecting "Workflows". The workflow page will be displayed indicating that the workflow has already been started. For a solution to this issue, please [read this document](#).

ERRORS ENCOUNTERED WHEN OVERWRITING A DOCUMENT IN SHAREPOINT

When a different user to the one who originally submitted a SharePoint document tries to edit and resubmit it, errors in the Qdabra eventlog will prevent completion of the SharePoint submit. To workaround this problem, you must give users read/write permissions to the Qdabra eventlog. Please see the document called [How to Give Users Event Log Permissions to Allow SharePoint Overwrite](#) for details on the solution.

"OPERATION ABORTED" ERROR WHEN CREATING A SHAREPOINT MAPPING

When adding a SharePoint mapping in the DBXL Administration Tool, you may discover that **Web Service** works, while **Object Model** does not. If you want to use browser forms (thus SharePoint and DBXL reside on the same machine), you'll need to use Object Model. When you try to save that mapping, however, DAT produces the following error:



If you encounter this issue please check the Application eventlog for errors matching the time of the Qdabra DBXL error. You may discover a SharePoint error at those times with Network Service not having permission to access the SharePoint database. The **Object Model** option does direct database access. To solve this, please switch DBXL to use the same identity as the SharePoint app pool.

PERMISSIONS ERROR WITH SHAREPOINT WEB SERVICE MAPPING

When using the Web Service option in the SharePoint mapping tab, you may encounter an error like this:

Error updating list item metadata in SharePoint collection http://dbxl-test3/TestLibrary: 0x81020016 Item does not exist



<http://www.qdabra.com>

Last updated on 1/5/2013 6:59 PM

Copyright © 2006-2012 Autonomy Systems, LLC. All rights reserved.

The page you selected contains an item that does not exist. It may have been deleted by another user. (DocType = 'TestForm', DocId = 7) encountered a critical error and needs attention.

Usually this error is related to a permissions issue and is generated by a user who has limited permissions to DBXL Document Types or Documents and when Check Out is required in SharePoint. Even after removing the Check Out requirement, you may still get the following:

Caught exception saving document to SharePoint collection http://dbxl-test3/TestLibrary. (DocType = 'TestForm', DocId = 7) encountered a critical error and needs attention:

System.InvalidOperationException: Cannot open log for source 'Database Accelerator'. You may not have write access. ---> System.ComponentModel.Win32Exception: Access is denied

To work around this issue, a registry change is needed on the server where DBXL is installed. Please proceed with caution. Edit the CustomSD value under [HKEY_LOCAL_MACHINE\SYSTEM\CurrentControlSet\Services\Eventlog\Qdabra]. Append "(A;;0x3;;;S-1-1-0)" at the end of the value (without the quotes). The value should end up looking something like this:

```
"O:BAG:SYD:(D;;0xf0007;;;AN)(D;;0xf0007;;;BG)(A;;0xf0007;;;SY)(A;;0x7;;;BA)(A;;0x7;;;SO)(A;;0x3;;;IU)(A;;0x3;;;SU)(A;;0x3;;;S-1-5-3)(A;;0x3;;;S-1-1-0)"
```

IF USING SHAREPOINT MAPPING, USE THE SHAREPOINT IDENTITY FOR THE DBXL APP POOL

If adding a SharePoint mapping to your document type, make sure that the DBXL app pool uses the same account as the SharePoint application pool. Otherwise, you might encounter errors that say "Invalid URI: The format of the URI could not be determined" or "The Web application at http://<your_sharepoint_site> could not be found".

ERROR WHEN ADDING A CONTENT TYPE MAPPING TO A SIGNED FORM WITH CODE

If your InfoPath form template is a signed form with code, and you want to use a content type mapping, you might encounter an error when saving the document type in DAT.



The steps to reproduce this error are as follows:

1. Publish XSN as site content type to a SharePoint library [ShPLibrary1].
2. Add the content type to ShPLibrary2.
3. Add the published content type to DBXL using link in ShPLibrary1 [e.g. <http://<servername>/MyContentTypes/InvistaForm.xsn>]
4. Check "Form template is signed".
5. Go to **SharePoint** tab in DAT.
6. Insert mapping to <http://<servername>/InvistaTest4/Forms/AllItems.aspx>
7. Click Save.
8. Click Download button in DAT's **General** tab.

Though it's not clear why InfoPath shows "Catastrophic failure", it is not possible to open signed forms from DAT, so this is not a valid scenario because the publishUrl in the XSN will be different from DBXL's template URL. In place of the error shown above, it is possible that you obtain a different error (about not being able to open the form from its location) for the same scenario.

DBXL DOES NOT ADD COLUMNS TO THE DEFAULT VIEW

When you save a SharePoint mapping in DBXL v2.6, the web service will create additional columns (related to the DBXL web service) but will not add them to the default view. If you wish to add these columns, they can be added to each view individually, as desired.

RESHREDDING WILL NOW PRESERVE THE MODIFIED COLUMN

In previous versions of DBXL, reshredding would change both the ModifiedBy and Modified columns to show the user who reshredded and the time of the reshred. Starting in DBXL v2.6, a reshred will preserve the value of the Modified column (to the last person who modified the XML). However, in order to do so, the person reshredding must be a site collection admin in SharePoint.

MAPPING FAILS DUE TO WEBDAV ROLE

When setting up a SharePoint mapping you might encounter a 405 error (Method Not Allowed). This SharePoint mapping error is a result of the WebDAV role being installed on the server. This is a known problem with SharePoint not functioning with WebDAV installed, described here: <http://sharepointinterface.com/2009/12/28/sharepoint-webdav-and-a-case-of-the-405-status-codes/> The fix is to uninstall the WebDAV role on the SharePoint web front end server and then save the SharePoint mapping in DBXL.

DBXL PERMISSIONS WHEN SANDBOXING FORMS IN SHAREPOINT 2010

If you're working on SharePoint 2010 and your InfoPath form has code, DBXL will be using the Sandboxing feature in SharePoint to publish the form. If using the qRules command SaveToDbxl, you might encounter the following error:



<http://www.qdabra.com>

Last updated on 1/5/2013 6:59 PM

Copyright © 2006-2012 Autonomy Systems, LLC. All rights reserved.

Action: SaveToDbxl. Arguments: submit: SubmitDocument

xpath: /my:myFields/my:File

. Details: I0033Access denied. Stack: at Qdabra.Utilities.SubmitDocument(String docType, String name, String author, String description, SubmitDocument submitDocument, XPathNavigator xml, String& docId, String& refId) at Qdabra.Tools.RulesLibrary.Commands.SubmitQdFileToDbxl(String submit, String domainId, String& base64Value, String& fileName, String& fileExtension) at Qdabra.Tools.RulesLibrary.Commands.SaveToDbxl(String submit, String dsname, String xpath, Boolean qdimage, String domainid) at Qdabra.Tools.RulesLibrary.Commands.SaveToDbxl() at Qdabra.Tools.RulesLibrary.Commands.ExecuteCommand()

In that sample scenario, the workaround is to enforce permission in the QdFile system docytpе so that everyone (NT AUTHORITY\Authenticated Users) is allowed to **Add**. This is necessary because, when using sandbox, users authenticate as the service account, so the service account needs permissions to add QdFiles.



BROWSER (IPFS) FORMS

IPFS REQUIRES DBXL AND SHAREPOINT ON THE SAME MACHINE

If you wish to add a SharePoint mapping to your DBXL solution in conjunction with IPFS, such that your forms open in the browser, you will need to install DBXL on the same machine as SharePoint. When setting up the SharePoint mapping in DAT, this means using the Object Model. Web Service is not possible for this scenario, because cross-machine UDC connections are not supported. For more information, please see the documents called “How to IPFS enable a DBXL solution” and “How to set up a SharePoint mapping using Web Service” on InfoPathDev.com > **Downloads > DBXL Documentation > [SharePoint Integration](#)**. If you wish to use IPFS when DBXL and SharePoint are on different machines, please refer to the [Side-by-side documentation](#) (DBXL v2.4 and newer).

INFOPATH 2010 FORM WITH ON-LOAD SHAREPOINT 2010 DATA CONNECTION

An InfoPath 2010 browser-enabled form with an on-load data connection that retrieves data from a SharePoint 2010 library or list may present an error when using DBXL v2.4 (or newer). This is because InfoPath 2010 uses relative paths for this data connection. The workaround is to:

1. publish the XSN template directly from InfoPath to SharePoint,
2. download the template from SharePoint,
3. attach the downloaded XSN to DBXL,
4. and then add the SharePoint mapping, checking “Publish XSN” and “Use Forms Services”.

By publishing the form directly from InfoPath to SharePoint, the data connections get fixed up and can then be used without issue in DBXL.

IPFS SHAREPOINT SUBMIT FAILS WITH TIMEOUT EVEN WHEN SUCCESSFUL

On a cold server SharePoint submit times out (even though it is successful). This happens because SharePoint can take longer than 30 seconds to process a new document. As a result, the submit operation succeeds but IPFS reports to the user that it failed due to timeout.

The default data connection timeout in the IPFS settings is 10 seconds. If the data connection is taking longer than 10 seconds to connect to DBXL, expect to get an error. Increase this timeout value to resolve the issue. Thanks to Marcello Brocchi for the solution for this issue.

If this does not solve the issue, please see [this document](#) for code that allows you to increase the timeout value.

IF LEFT IDLE, SUBMIT BUTTON IN BROWSER FORM FAILS

In browser (IPFS) forms you might have issues with the submit button if the form is left idle. Please check the following:

1. There is a proxy server set in Internet Explorer and the Sharepoint URL was not in the bypass list. Make sure you bypass the proxy when using QdabraWebService.



2. Open Sharepoint Central Administration > Application Management > Configure InfoPath Forms Services and make the following changes:
 - Default Data Connection Timeout: 60000
 - Maximum data connection timeout: 60000
 - Number of postbacks per form session state: 200
 - Number of Actions per postback: 400
 - Maximum size of form session state: 4096
 - Select the location to use the storing form session state: Set this radio button to "form view"
3. Open the Infopath form in design mode and click on Tools > Form Options > Browser. Deselect the option to "Refresh the form before submitting it if form data might change during processing".

HOST HEADERS CREATE SHAREPOINT-RELATED ERRORS

DBXL v2.4 allows you to query data from SharePoint and create mappings that link DBXL and a SharePoint Form Library. If the URLs used to access the SharePoint and DBXL sites are different, you will encounter cross-domain/machine issues. As an example, let's assume the SharePoint site is <http://portal/> and DBXL is installed on <http://machine01/QdabraWebService/>. If portal is just an alias for machine01, you can either

Option A: Reinstall DBXL

1. Go to the directory where DBXL is installed and create a copy of DBXL's web.config file.
 - Why do we back this up? If you have any settings right now, such as database aliases, you'll use this as a reference to restore those values later.
2. Uninstall DBXL. This can be done via Control Panel.
3. Add portal as a hostheader entry on the SharePoint site.
4. Reinstall DBXL.
 - As you install DBXL, the installer should pick up the portal hostheader and web.config should use <http://portal/qdabrawebsevice/> (instead of the IP).
5. From DAT, click Edit and then click Save for every document type.
 - This will propagate the change to all document types.
6. Make any necessary updates to the new web.config that was created by the installer.

Option B: Fix up the web.config manually

1. Go to the directory where DBXL is installed. Open the web.config file in a text editor.
2. Update the DBXL web.config to use [http://portal/qdabrawebsevice/...](http://portal/qdabrawebsevice/) instead of <http://<ip address>/qdabrawebsevice/>. You can find and replace all instances.
3. Reset IIS.
4. Execute PublishDATFormTemplate. This is done by opening <http://portal/qdabrawebsevice/> in Internet Explorer from the same machine where DBXL is installed. Click on "Admin service" and then click on PublishDATFormTemplate. You'll enter the full path to the location of DAT-template.xsn (the path may be C:\inetpub\wwwroot\Qdabrawebsevice\install\DATtemplate.xsn, but please verify). Then click the button.
5. Click Edit and then click Save for every document type.
 - This will propagate the change to all document types.



DAT DOES NOT DETECT WHETHER BROWSER FORMS ARE SUPPORTED

The DBXL Administration Tool (DAT) does not detect whether the SharePoint server supports browser forms. When a user checks “Use Forms Services” and browser forms are not supported by the server, the error returned might be confusing, as seen below:



This simply means that the server does not support browser forms.

SHAREPOINT 2010 AND TRUSTED ROOT CERTIFICATES

SharePoint 2010 requires adding trusted root certificates in SharePoint Central Admin before SSL connections can be established in IPFS forms. If you encounter problems with data connections in browser-enabled (IPFS) forms on, please verify whether these certificates have been added.

COMPATABILITY WITH WSS 2.0

Though DBXL is compatible with WSS 2.0, there are certain limitations:

- **“Publish Library and XSN”:** On the SharePoint tab in DAT, there is a checkbox labeled “Publish Library and XSN.” This allows DBXL to create a SharePoint Form Library based on the template.xsn saved in DBXL, but it is not compatible with WSS 2.0. For users with WSS 2.0 there is a workaround, detailed in the document called [How to Create SharePoint Mappings on WSS 2.0](#).
- **QuerySharePoint:** If you are using WSS 2.0, users may encounter an error when calling the QuerySharePoint web service. The problem occurs because WSS 2.0 will not accept the human readable name as column name. To workaround this problem, use the static name column as *value* for the following parameters: *tns:valueColumn*, *tns:displayColumn*, *tns:sortColumn* and *tns:sortOrder*. Remember to also modify your queries (in *tns:query* and *tns:filterXml* parameters) to use the static column name. To get information about the static column name, navigate to <http://<servername>/QdabraWebService/QuerySharePoint.asmx>, and choose the DescribeListSchema method. You can then enter a SharePoint list name in order to retrieve all columns’ static name values.
- **Propagate deletes:** The document called [How to propagate deletes from SharePoint to DBXL](#) explains how to allow SharePoint and DBXL to keep delete operations in sync. However, this is not compatible with WSS 2.0.
- If using DBXL v2.4 with WSS 2.0, DBXL must be installed on the same machine as SharePoint. Otherwise, DBXL will not be able to create SharePoint mappings.



DATABASE MAPPING

DBXL DOES NOT SUPPORT THE WINDOWS INTERNAL DATABASE

The “[Windows Internal Database](#)” is a stripped down version of SQL used on standalone WSS 3.0 installs. This is an embedded data service that can only be used by a handful of Windows Services. You are not allowed to connect to and use this particular database service. Because Microsoft does not support connecting to that database, you will need to install a separate instance of SQL in order to install DBXL.

GETDOCUMENTSUMMARYBYTYPE IS LIMITED BY SQL TO 2100 ITEMS

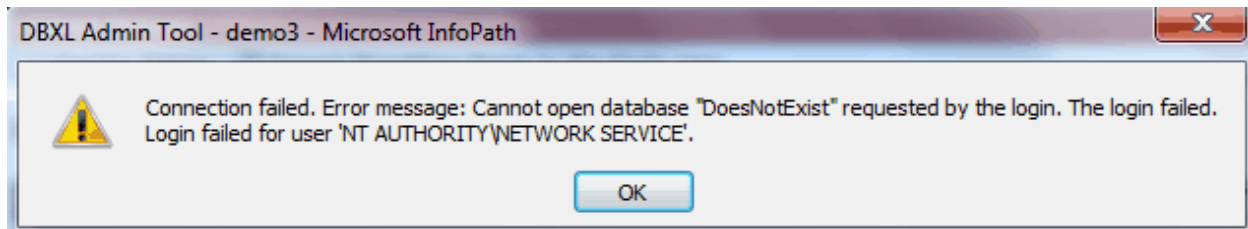
The web service GetDocumentSummaryByType will produce an error if the document type being queried contains more than 2100 items. This is a SQL limitation. If you need to perform this query, we suggest using the QueryDB web service.

SHREDDING WITHOUT A KEY RETURNS ERROR IN DATABASE MAPPING

Mapping a form to a SQL database requires the existence of either a key column or an identity column. If the table does not have an identity column, and the user does not designate a column as the “key” column in the Database tab, DAT will return a validation error to the user.

ERROR MESSAGE: CANNOT OPEN DATABASE REQUESTED BY THE LOGIN. THE LOGIN FAILED.

When saving a Database mapping, the following error might arise:



“Connection failed. Error message: Cannot open database <database-name> requested by the login. The login failed. Login failed for user <username>”

When facing this error, please check whether the database exists, whether your connection string is correct and whether the username in the error message has permissions to the database.

CANNOT MAP TO A DATABASE COLUMN THAT HAS IDENTITY SET TO ‘YES’

When you map the DBXL DocID (DBXL::DocID) to a column in your database, make sure the column does not have Identity setting of ‘Yes’. SQL tries to automatically set the value of identity columns, thus preventing the DBXL Web



Service from setting it. This scenario leads to an error, and therefore you should never map a value into an identity column in the database.

DBXL DOES NOT SUPPORT 'YES' AND 'NO' AS BOOLEAN VALUES

When shredding Boolean values into a database, DBXL does not support 'yes' and 'no' as Boolean values. When shredding into 'bit' types in the database, the DBXL mapping should be 'Boolean' and the XML being submitted should set the field to either '1', 'true', '0' or 'false'.

CANNOT DELETE DOCUMENTS WHEN THERE IS A MAPPING ERROR

If a Document Type contains mapping errors, deleting a document in that Document Type will fail. Deleting the Document Type itself will also fail, because DAT attempts to delete all documents before deleting the Document Type. Remove the connection string in the Database tab, and then delete all documents. You will also need to manually clean up any databases where the data was previously mapped.

RESHRED ALL FAILS DUE TO TIMEOUT IN DAT

When working with large database mapping or a large number of xml documents, you might encounter a timeout if you attempt to *Reshred All* in DAT. To workaround this issue, please download our Document Deployer (also known as the Migration Tool) to Reshred all documents in the background.



QUERYSHAREPOINT

USE OF QUERYSHAREPOINT REQUIRES SHAREPOINT INSTALLED ON THE SAME MACHINE

QuerySharePoint can only be used when DBXL is installed on the same machine as SharePoint. Otherwise, using the QuerySharePoint web service in forms will lead to an 'Access denied' error. The same result will be encountered with Query Builder when accessing SharePoint lists of a different server.

QUERYSHAREPOINT FAILS ON SHAREPOINT 2003

If you are using SharePoint 2003 (WSS 2.0), users may encounter an error when calling the QuerySharePoint web service. The problem is due to the fact that SharePoint 2003 will not accept the human readable name as column name.

To work around this problem, use the static name column as *value* for the following parameters: *tns:valueColumn*, *tns:displayColumn*, *tns:sortColumn* and *tns:sortOrder*. Remember to also modify your queries (in *tns:query* and *tns:filterXml* parameters) to use the static column name.

To get information about the static column name, navigate to `http://<server name>/QdabraWebService/QuerySharePoint.asmx`, and choose the DescribeListSchema method. You can then enter a SharePoint list name in order to retrieve all columns' static name values.

USING DYNAMIC QUERIES IN REPEATING TABLES

If you are using QuerySharePoint in a repeating table, you might encounter a problem with dynamic queries set in a repeating field. The query (as generated by Query Builder) will not get updated when inserting new rows. To fix this error, replace the value in the concat query that shows `<value>`, `RepeatingField`, `" </value>` with a `current()` parameter.

For example: `concat("<query><columns><column name='Product_x0020_Code'/></columns><filter><eq><column name='Product_x0020_Name'/><value>`, `current()`, `"</value></eq></filter></query>"`

If you experience the same with QueryDB, use the solution as recommended above.

USE CDATA WHEN WORKING WITH SPECIAL CHARACTERS

When using dynamic query in QuerySharePoint, data with special XML characters (& and <) will get rejected in the query and will return empty values in repeating tables. To avoid this problem, just add a CDATA tag in your concat query (the rule that sets the dynamic query for your QuerySharePoint connection). For example:

`concat("<query><columns><column name='Product_x0020_Code'/></columns><filter><eq><column name='Product_x0020_Name'/><value><![CDATA[", current(), "]]></value></eq></filter></query>"`

Make sure the value inside the CDATA sequence uses the `current()` parameter in order to get the correct value in the repeating field that runs the query. If the same error occurs with QueryDB, use the same solution as recommended.



QUERYBUILDER

QUERY BUILDER USES THE LOCAL USER'S CREDENTIALS TO CONNECT TO SQL

QueryBuilder uses the person's local credentials to connect to SQL. Even if you enter a connection string with a username and password, while working within QueryBuilder, the local credentials are used. The workaround is to add database permissions for the user, even if temporarily, while designing the query in QueryBuilder. Once the query is designed, the user can be removed from the database permissions.

QDABRA'S QUERY BUILDER TOOL USES THE 2007 OM

Qdabra's Query Builder tool uses the 2007 InfoPath Object Model (OM). Therefore, it is not backwards compatible with InfoPath 2003. It is forward compatible with InfoPath 2010.

UNINSTALLING QDABRA'S QUERY BUILDER INFOPATH FORM TOOL

Qdabra's Query Builder InfoPath form tool needs to run with full trust so that it can execute shell commands. To install this full trust tool on your local computer, we use InfoPath's built-in support for URN based solutions. When the form is installed, InfoPath adds entries to your Windows registry. Unfortunately, due to a bug in InfoPath installer, sometimes uninstalling doesn't work and the registry entries are not cleaned up correctly. Please see [this document for help](#).

QUERYBUILDER DOES NOT SHOW USER-FRIENDLY COLUMN NAMES

When using older versions of QueryBuilder to build SharePoint queries, the form might display column names that are not user-friendly, as in the screenshot below.

The screenshot shows the Qdabra Query Builder interface. The 'Query Columns' table contains the following data:

Column Name
_x007b_857c8175_x002d_705a_x002d_460a_x002d_aee3_x002d_91721bc3bf71_x007d_
_x007b_0ca90904_x002d_6f51_x002d_4c97_x002d_a451_x002d_b908a75acbc5_x007d_

The 'Field Selection' pane on the right shows a list of fields from a SharePoint list, including: Test Lib, Check In Con, Copy Source, Version, Form Name, Sample Field, Created By, Checked Out, Content Type, Created, Type, Edit, Modified By, Name, File Size, ID, Name, Name, Modified, Source Name, and Source Vers.

The **<query>** generated by QueryBuilder will still work, in spite of the column names. Please [upgrade to the latest version of QueryBuilder](#) to avoid this issue.

INVALID XML



<http://www.qdabra.com>

Last updated on 1/5/2013 6:59 PM

Copyright © 2006-2012 Autonomy Systems, LLC. All rights reserved.

When working with QuerySharePoint or QueryDB, you might encounter an error that says: "Data at the root level is invalid. Line 1, position 1". This error indicates a problem with the <query> node. You could try using QueryBuilder to re-generate the value for <query>.

For example, in a dynamic query, you should check that the <query> that begins with concat() is used in rules and not in the data connection wizard.

ENCODED SPACES IN THE URL PRODUCE AN ERROR

When using QueryBuilder and QuerySharePoint, you need to enter the URL to your SharePoint list. Internet Explorer encodes spaces as %20, but DBXL produces an error if you use a URL containing a %20.

The workaround is simply to replace %20 in the URL with an actual space. This works in QueryBuilder as well as in the InfoPath data connection wizard.



QUERYDB

USER ENCOUNTERS "DATABASE NOT REGISTERED FOR USE" ERROR WHEN CALLING QUERYDB

Before you can begin using the QueryDB web service, the database being queried needs to be added to DBXL's web.config file. Specifically, an entry of the syntax `<database alias="DB_Alias" name="SampleDB" server="default" />` must be added to the configuration/qdabra.dbxl/enumdb/databases node. The SQL server declared during installation (where the databases QdabraDBXL and QdabraSamples are located) is added by default, but any additional databases must be added individually.

QUERYDB USES THE CREDENTIALS OF THE WEB SERVICE INSTEAD OF THOSE OF THE QUERYING USER

QueryDB currently only uses permissions that are defined on the SQL Server that it is querying. Because the QueryDB web service acts as a liaison between the end user and the database, the database only receives requests from the web service. This means that any user accessing the web service has the same permissions as the user account (generally NETWORK SERVICE) that the web service is running as. Since most users have less permissions as the NETWORK SERVICE account, this is considered an Elevation of Privilege security hole. One way to reduce the risk is to create a new account for the web service to run as, and only allow that account access to query the DB. Qdabra will address this issue in a future release.

USING QUERYDB WITH A DYNAMIC SQL TABLE

If your SQL table has the potential to change (for instance, adding a new column), you should have QueryDB access a SQL view instead of directly accessing the table. This will allow the underlying table to change and small modifications to the view will prevent your InfoPath solution from breaking.

HOW CAN USERS QUERY NON-DBO TABLES USING QUERYDB?

When calling the QueryDB web service, you'll get an error message when querying non-DBO tables, such as certain AdventureWorks tables (e.g. HumanResources.Employee). This is a known limitation of the web service which will be addressed in a future version.

One workaround would be to give each table a separate view.

Another option is to manually change the `table=""` attribute to have the value SCHEMANAME.TABLENAME. This would allow you to query tables in any schema.

INVALID XML

When working with QuerySharePoint or QueryDB, you might encounter an error that says: "Data at the root level is invalid. Line 1, position 1". This error indicates a problem with the <query> node. You could try using QueryBuilder to re-generate the value for <query>.



<http://www.qdabra.com>

Last updated on 1/5/2013 6:59 PM

Copyright © 2006-2012 Autonomy Systems, LLC. All rights reserved.

For example, in a dynamic query, you should check that the <query> that begins with concat() is used in rules and not in the data connection wizard.

QUERYING THE QDABRADBXL DATABASE

The DBXL database should be accessed via QueryDB using the built-in alias #DBXLDB#. No additional alias is needed or should be added in web.config.

When the #DBXLDB# alias is used, QueryDB has logic to prevent access to vital columns in the Document and DocumentHistory tables, unless these are specified by the form designer in the queryxml. The specific columns that are excluded are: DataExtractedPlaintext, DocumentXml and DocumentIndexedXml.



MISCELLANEOUS

MODIFY THE DURATION OF DBXL LOCKS

When editing an XML, DBXL locks documents for 30 minutes by default. If you wish to modify this setting, please edit the DBXL web.config form, and change the DocumentLockDurationInMinutes parameter. Setting this to -1 (negative one) will make it an infinite timeout.

ACTIVE DIRECTORY WEB SERVICE QUERY FAILS ON WINDOWS XP

If you install DBXL to Windows XP and you cannot query the Active Directory Web service (ADUserInfo.asmx) you will have to manually configure your machine's ASP.NET account. To verify that this is the problem, navigate to <http://machine/QdabraWebService/ADUserInfo.asmx>, click *GetMyInfo* and *Invoke*. If you don't get XML you will need to follow [the configuration steps detailed in this document](#).

DBXL RETURNS LICENSING/DOMAIN ERROR WHEN SQL IS UNAVAILABLE

If SQL Server Agent is not running for some reason, opening DAT results in this error:

```
The query cannot be run for the following DataObject: GetMyDomains
InfoPath cannot run the specified query.
The SOAP response indicates that an error occurred on the server:
System.Web.Services.Protocols.SoapException: Server was unable to process request. --->
System.ApplicationException: You have not installed a license to use the ADUserInfo service.
at Qdabra.Dbxl.WebService.AdUserInfo.GetMyDomains()
--- End of inner exception stack trace ---
```

DBXL cannot get licensing information because there's a problem with SQL. Restarting the SQL services usually solves this issue.

INFOPATH ERRORS ON OLDER OFFICE SERVICE PACKS

You might encounter the error below if you have upgraded .NET but have not installed the latest Office service packs:

```
System.Security.SecurityException
Request failed.
at Microsoft.Office.InfoPath.MsxmlNavigator.IsValidNode(MsxmlNode test)
at Microsoft.Office.InfoPath.MsxmlNavigator.MoveToFirstChild()
at MS.Internal.Xml.XPath.XPathChildIterator.MoveNext()
at MS.Internal.Xml.XPath.ChildrenQuery.Advance()
at MS.Internal.Xml.XPath.AttributeQuery.Advance()
at MS.Internal.Xml.XPath.XPathSelectionIterator.MoveNext()
at System.Xml.XPath.XPathNavigator.SelectSingleNode(XPathExpression expression)
at System.Xml.XPath.XPathNavigator.SelectSingleNode(String xpath)
```



<http://www.qdabra.com>

Last updated on 1/5/2013 6:59 PM

Copyright © 2006-2012 Autonomy Systems, LLC. All rights reserved.

at *Qdabra.Tools.RulesLibrary.Commands.ExecuteCommand(Application application, XmlFormHostItem formHost, XPathNavigator commandsNavigator)*
 at *Qdabra.Tools.RulesLibrary.FormCode.QdabraRules__Command_Changed(Object sender, XmlEventArgs e)*
 at *Microsoft.Office.InfoPath.Internal.XmlEventHost.GenericProxy(Object genericDelegate, DataDOMEvent dataDOMEvent, InfoPathEvents type)*
 at *Microsoft.Office.InfoPath.Internal.XmlEventHost.ChangedProxy(DataDOMEvent dataDOMEvent)*
 at
Microsoft.Office.Interop.InfoPath.SemiTrust._DataDOMEventSink_SinkHelper.OnAfterChange(DataDOMEvent pDataDOMEvent)

To solve, this simply install the latest Microsoft Office service packs.

NOTIFICATIONS EMAIL IS DELIVERED INTO THE JUNK E-EMAIL FOLDER

Microsoft Outlook (and other mail programs) may classify notification email as junk. To avoid this, add the sender to the “safe list” of your mail software. In the case of Microsoft Outlook, follow these steps:

1. Right-click on the email that was delivered to the Junk e-mail folder.
2. Choose *Junk E-mail*, click *Add sender to Safe Senders List*.

DIGITALLY-SIGNING DOCUMENTS FOR USE IN DBXL

To track documents, DBXL inserts a processing instruction into the XML on submit, which includes a unique DocID. After initial insertion, the DocID is used to identify the document when it is resaved, deleted, or reshredded. As a result of this insertion, you cannot digitally sign a document before submitting it for the first time. To workaround this, please read the document called [How to use Full Trust form templates in DBXL](#), which includes a tool that allows for a workaround.

UPLOADING LARGE ATTACHMENTS IN DBXL

When uploading large attachments in DBXL, a time-out error is likely to occur. This error is due to the IIS `maxRequestLength` setting in `web.config`. `maxRequestLength` is an optional `Int32` attribute. It specifies the limit for the input stream buffering threshold, in KB. This limit can be used to prevent denial of service attacks that are caused, for example, by users posting large files to the server. The default is 4096KB. If the threshold is exceeded, a `ConfigurationErrorsException` error is thrown. To work around this limit, follow the steps in this [document](#).

DOCUMENTS OPEN IN READ-ONLY MODE IN WINDOWS VISTA

If the client machine has Vista installed, DBXL documents open in InfoPath on Read-only mode. This has been a known issue in Vista. To get around this, you need to setup a Web folder connection from the client to the server machine where DBXL is installed.

1. In the Vista client machine, go to Start, right-click Network and select Map Network Drive. Alternatively, go to Start > Computer, and on the taskbar, click on Map network drive.
2. On the Map Network Drive dialog, click Connect to a Web site that you can use to store your documents and pictures.



<http://www.qdabra.com>

Last updated on 1/5/2013 6:59 PM

Copyright © 2006-2012 Autonomy Systems, LLC. All rights reserved.

3. The Add Network Location wizard will open. Click Next.
4. Select Choose a custom network location and click Next.
5. In the Internet or network address field, enter your server url in the format, `http://<servername>/QdabraWebService`, and click Next.
6. When prompted, enter your Username and Password and click OK.
7. Type a name for your network location, and click Next, then Finish to exit the wizard.
8. Verify that you can now open DBXL documents in Read/Write mode.

Note that this workaround is session-based. When you log off your machine and log back on, Vista will override your credentials again. Since you have already setup a Web folder connection to your server, you just have to open the Web folder and enter your Username and Password once. Vista will then cache your credentials for that particular session.

PRESERVE MORE ERROR EVENTS IN EVENT VIEWER

To preserve more error events in your event log, open Event Viewer, right click on Qdabra and select Properties. By default, the Event Viewer log is set to "Overwrite Events As Needed" and to a maximum log size of 2048Kb. You may change the default settings as desired.

REMOVING CLUTTER FROM THE QDABRA EVENT LOG

To help form developers debug their form mappings, DBXL logs informational messages to the Qdabra Event Log when a node is not found in the XML. If your form includes optional sections, a node missing from the XML is common scenario. Therefore, these messages will create unnecessary clutter. To stop these messages from being logged, set the `logShredWarnings` value in DBXL's `web.config` to `false`.

SHAREPOINT LISTENER ISSUE WITH DOCUMENT LOCKING

If a user locks a DBXL document (for example, via a call to `LockDocument`), then tries to delete the document from SharePoint, the document is deleted from SharePoint but not from DBXL. However, if a different user has the document locked, the second user will get a message explaining the lock from the other user. Since the user that locked the document is the same user who is trying to delete, one would not expect an error message.

Though not a common scenario, Qdabra is investigating a fix for a future version of DBXL. As a workaround for users on DBXL v2.7 or earlier, Qdabra recommends forcing users to release the lock on the document before allowing the delete.



DASHBOARD

DBXL STANDALONE VERSION REQUIRES SERVICE RESTART FOR CONFIGURATION CHANGES

Unlike the default IIS configuration (for a server version of DBXL), updating the configuration file will not cause the standalone service to restart. For config changes to take effect, you will need to recycle the "Qdabra DBXL Standalone Edition" service in the Administrative Tools/Services applet.

You can also open a command-line (as administrator) and execute:

```
net stop "Qdabra DBXL Standalone Edition"  
net start "Qdabra DBXL Standalone Edition"
```

TEMPORARY FILES AND DISK SPACE WHEN USING THE DASHBOARD

When using the DBXL Standalone Dashboard, please ensure that the drive that contains the temporary folder (for example C:\Users\[username]\AppData\Local\Temp\) is **not** low on disk space. This is because InfoPath has a built-in mechanism that utilizes temp files with names of the format **mso####.tmp** whenever an InfoPath form is in use; the Dashboard itself does not have any logic that utilizes temp files. Qdabra's investigation so far has revealed this to be default InfoPath behavior and not exclusive to the DBXL Standalone Dashboard.

AUTOMATIC SYNC FROM THE DASHBOARD ONLY SUPPORTED ON WINDOWS 7

If you want the Standalone Dashboard to sync documents automatically (on a scheduled task), you'll need to use Windows 7. Windows XP and Vista are not supported for automatic syncs.

USING THE DASHBOARD TO SYNC LARGE XML DOCUMENTS

If you are using the Standalone Dashboard to sync large XML documents, the download or upload operations may fail because of the document size. The configuration of DBXL (client or server edition) must be updated to increase the maxStringContentLength/maxReceivedMessageSize. The default is set to 10MB.

```
<binding name="http" maxBufferSize="10485760" maxReceivedMessageSize="10485760">  
  <readerQuotas maxStringContentLength="10485760" />  
  <security mode="TransportCredentialOnly">  
    <transport clientCredentialType="Windows">  
      <extendedProtectionPolicy policyEnforcement="Never" />  
    </transport>  
  </security>  
</binding>  
<binding name="https">
```

UPLOAD FAILS WHEN DASHBOARD SWITCHES TO ANOTHER SERVER



<http://www.qdabra.com>

Last updated on 1/5/2013 6:59 PM

Copyright © 2006-2012 Autonomy Systems, LLC. All rights reserved.

If you are using DBXL's standalone dashboard on your local machine, and DBXL is migrated to another server, you will need to perform a clean reinstallation locally.

1. Uninstall DBXL locally and delete both the databases (QdabraDBXL and QdabraUtilities).
2. Migrate your remote (server) DBXL installation.
3. Install DBXL locally.

Once you do this, your local dashboard will be able to sync correctly with the new DBXL server.

DELETING FROM SHAREPOINT DOES NOT DELETE ON STANDALONE COPY

If you are using the Standalone Dashboard to sync documents from SharePoint, note that documents must be deleted manually in both the local DBXL and the remote SharePoint.

