



---

# Calling Web Services from InfoPath Browser Forms in a SharePoint Claims Authentication Environment

---

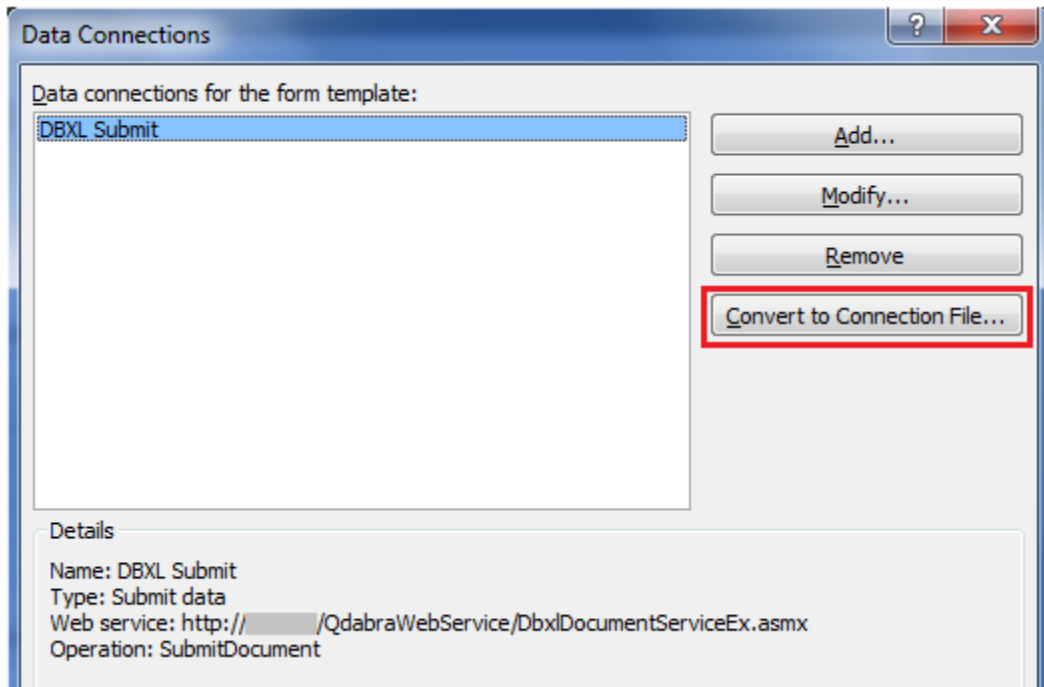
When running under SharePoint claims authentication, InfoPath browser forms cannot impersonate the caller when accessing web services, whether they are SharePoint services (e.g. UserProfileService.asmx) or DBXL. The workaround is to use a UDC with either SSO or explicit credentials. The steps below will explain how to modify your UDCs to use explicit credentials, such that they may be used in a Claims Authentication environment.

## SET UP

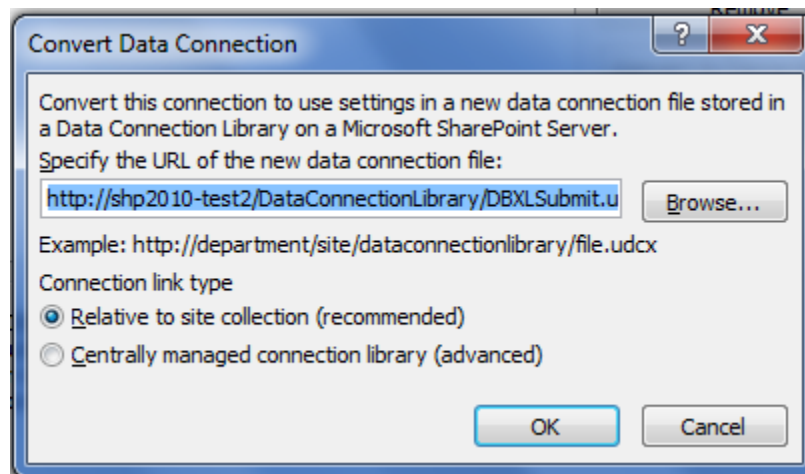
### CHANGE DATA CONNECTION TO UDCX

1. Open your form template in design mode.
2. Under **Data** tab, click **Data Connection**.
3. Select the data connection that is using SharePoint or DBXL web service.
4. Click **Convert to Connection File...** button.



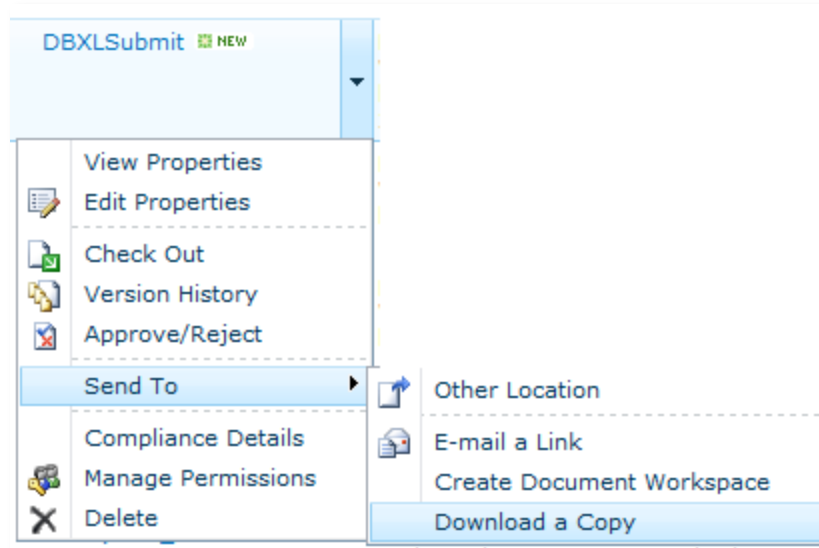


5. In the **Convert Data Connection** window, specify the URL of the new data connection file (e.g. <http://demo2/Data%Connections/DBXLSubmit.udcx>)



- 1) Refresh the SharePoint site data connection library and download the UDCX file to your local machine. To do this, click the down arrow to edit. Then select **Send To > Download a Copy**.





## EDIT UDCX TO CHANGE AUTHENTICATION MODE

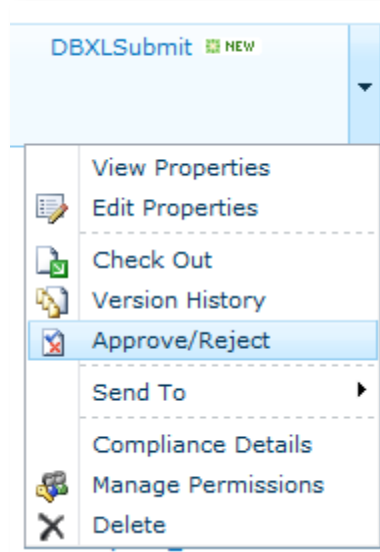
- 1) Go to the directory where you saved the UDCX file. Open the UDCX file in a text editor of your choice.
  - a. Configure the Secure Store Service (SSO equivalent in Shp2010). You may follow the steps in this [link](#).
  - b. Edit the UDCX file to use explicit credentials (specify CredentialType appropriate for your SharePoint configuration). Make sure to use a domain log in that has access to database and can view the table that you are trying to display in your form.

```
<udc:Authentication>
  <udc:UseExplicit CredentialType="NTLM">
    <udc:UserId>autonomysystems\testuser</udc:UserId>
    <udc>Password>plaintextpassword</udc>Password>
  </udc:UseExplicit>
  <!--udc:SSO Appld=" CredentialType=" /-->
</udc:Authentication>
```

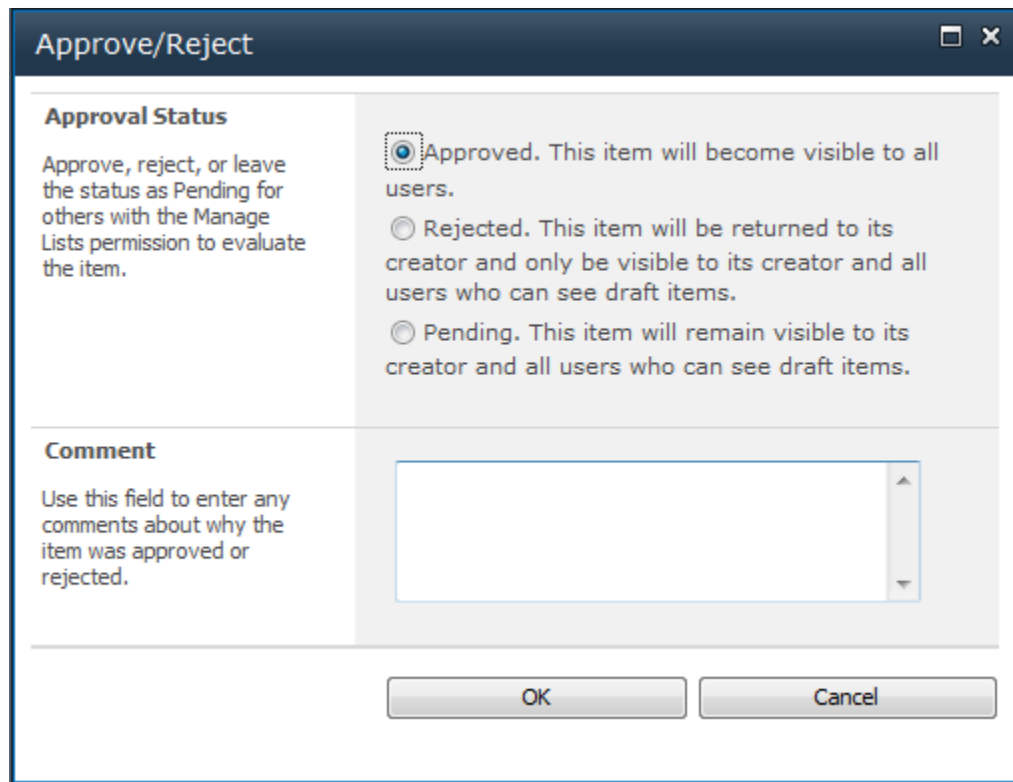
## UPLOAD UDCX TO SHAREPOINT

- 1) Back in the SharePoint data connection library, select the down arrow (Edit) button of the UDCX file and select **Approve/Reject**.





- 2) Select **Approve** and click **OK**.



**Approve/Reject**

**Approval Status**

Approve, reject, or leave the status as Pending for others with the Manage Lists permission to evaluate the item.

Approved. This item will become visible to all users.

Rejected. This item will be returned to its creator and only be visible to its creator and all users who can see draft items.

Pending. This item will remain visible to its creator and all users who can see draft items.

**Comment**

Use this field to enter any comments about why the item was approved or rejected.

OK Cancel

- 3) Now test the form by opening in the browser and submitting a document. Document will get submitted to DBXL or SharePoint.



## SUPPORT

If you have questions about the information in this document, please contact us for assistance. Licensed customers contact us via [Support@Qdabra.com](mailto:Support@Qdabra.com). Alternatively, please use the [InfoPathDev.com](http://InfoPathDev.com) [Qdabra Product support forums](#) to request help.



<http://www.qdabra.com>

Last updated on 12/20/2011 4:54 PM

Copyright © 2011 Autonomy Systems, LLC. All rights reserved.