

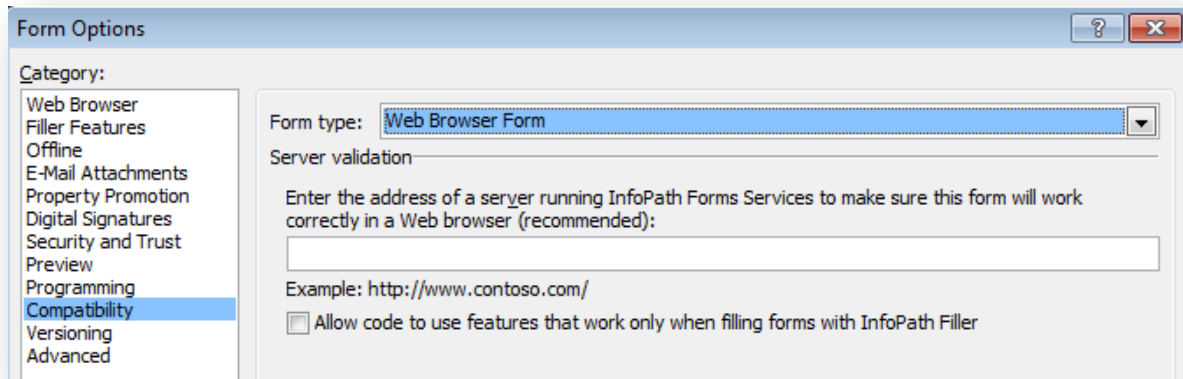


QDABRA™ QRULES AND DBXL

Working with an InfoPath 2010 form that uses qRules v2.4, DBXL v2.4 and SharePoint 2010

Qdabra's qRules v2.4 greatly simplifies the publishing process for InfoPath 2010 forms. If you have a browser-enabled InfoPath form that uses qRules v2.4, DBXL v2.4 and SharePoint 2010, you can quickly create a SharePoint mapping for your browser-enabled form by following the steps below.

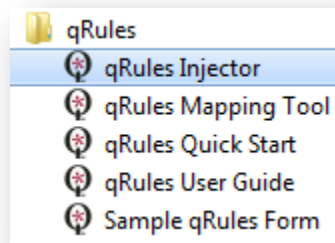
1. When you design your form, make sure that you have selected "Web Browser Form" under **Form Options > Compatibility**.



2. When you save your form, make sure to select "InfoPath Web Browser Form Template".

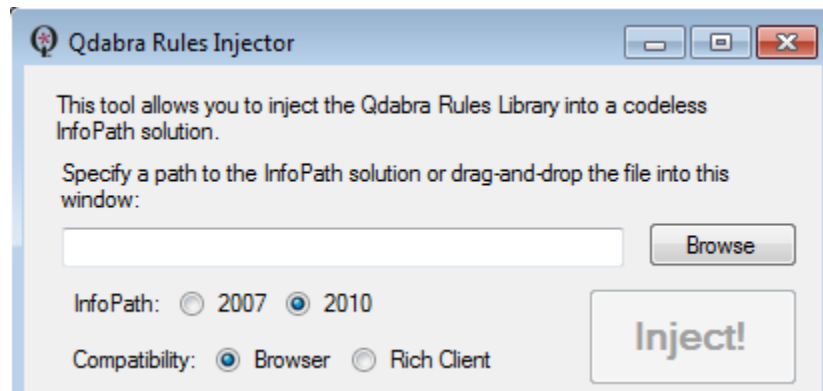
Save as type: **InfoPath Web Browser Form Template**

3. Close InfoPath and inject your form with qRules v2.4 using the qRules Injector.

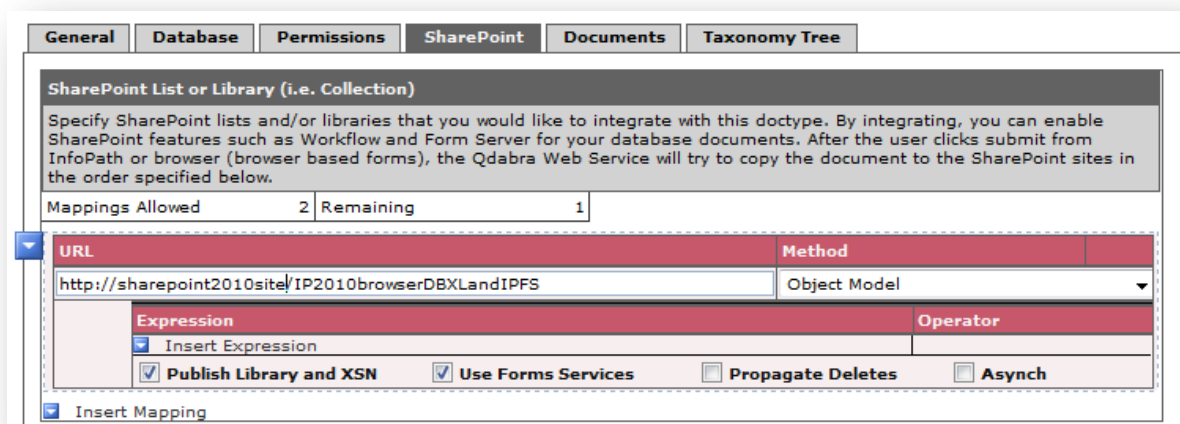




- When injecting, make sure to select InfoPath 2010 and Browser compatibility.



- Finish designing your XSN by adding the necessary qRules commands.
- Launch DAT. For details on this and the following steps, please refer to the Getting Started document included with DBXL v2.4
- Create a new document type in DAT and save.
- Go to the SharePoint tab in DAT, and add a mapping. Enter the **URL** to the form library that will be created, select **Object Model**, select **Publish Library and XSN** and select **Use Forms Services**. Save.



- The form will be published to SharePoint 2010 as a sandboxed solution. There are some restrictions to sandboxed forms. The following Microsoft link has additional information:
<http://msdn.microsoft.com/en-us/library/ee526360.aspx>
- Make sure that the SharePoint form library is set to open forms in the browser. This can be set under **Library Settings > Advanced Settings**.



Opening Documents in the Browser

Specify whether browser-enabled documents should be opened in the client or browser by default when a user clicks on them. If the client application is unavailable, the document will always be opened in the browser.

Default open behavior for browser-enabled documents:

- Open in the client application
- Open in the browser
- Use the server default (Open in the browser)

Voilà! Your InfoPath 2010 form template, injected with qRules v2.4, is now published to a SharePoint form library via DBXL v2.4.