



QDABRA QRULES v2.2

How to use the GetAttachmentAttribute command

INTRODUCTION

GetAttachmentAttribute command was introduced in qRules v2.2. This command gets a specific attribute of a file attachment.

Arguments:

- **xpath**: Xpath to field to Decrypt.
- **attr**: Specific attribute value to get (Name | Ext | Size | File)..
- **dsname**: (optional) Data source name.

Examples:

- GetAttachmentAttribute /xpath=/my:myFields/my:FileAttachment /attr=Name
- GetAttachmentAttribute /xpath=/my:myFields/my:FileAttachment /attr=Ext
- GetAttachmentAttribute /xpath=/my:myFields/my:FileAttachment /attr=Size
- GetAttachmentAttribute /xpath=/my:myFields/my:FileAttachment /attr=File
- GetAttachmentAttribute /xpath=/my:myFields/my:FileAttachment /attr=Name /dsname=<SECONDARY DATASOURCE>

PRE-REQUISITE

This tutorial assumes that you have qRules v2.2 is already installed on your machine. For details on this, please see the User Guide included with the installer.

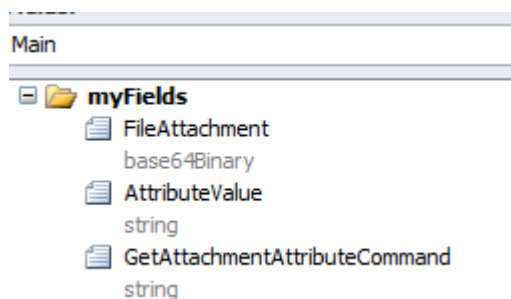
- 1) Create a new InfoPath form: In InfoPath, design a new, blank form. Select **File > Save As** and save the XSN to your local drive. Close the form.
- 2) Launch the qRules v2.2 Injector, browse to select the XSN you created and click Inject. Close the qRules Injector and open the form in Design mode.

For more information on the steps above, refer to the User Guide.

EXECUTION STEPS

Design your form template based on the following steps:

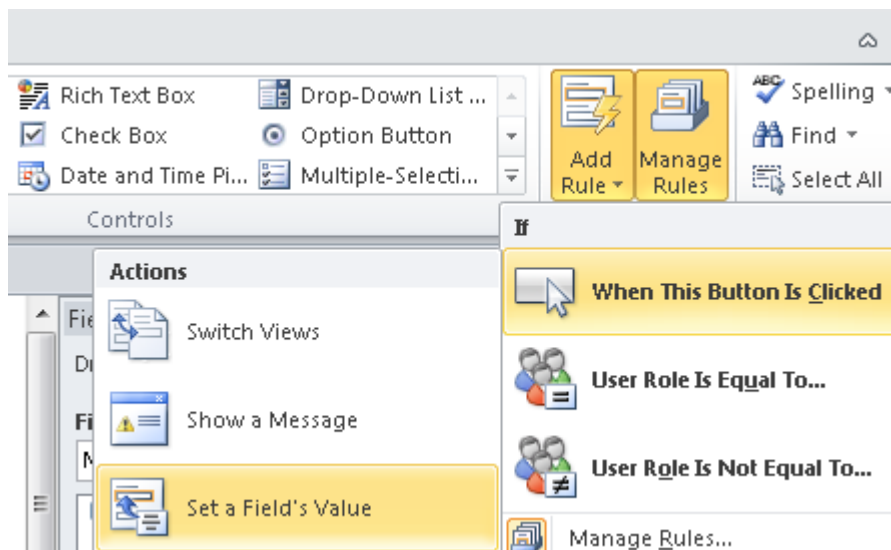
- 1) Drag and drop a file attachment control, a drop-down list box, a text box, and a button onto your canvas. Your main data source should be similar to the below one:



2) You will have a layout similar to the one below on your canvas:

Attach a file:	<input type="button" value="Click here to attach a file"/>
Select attribute value:	<input type="text"/>
GetAttachmentAttribute Command:	<input type="text"/>
<input type="button" value="GetAttachmentAttribute"/>	

1) Click **GetAttachmentAttribute** button, and then from **Home > Add Rule > When This Button is Clicked > Set a Field's Value**:



2) Now set the **Field** value to point to the **QdabraRules (Secondary) Command** field.

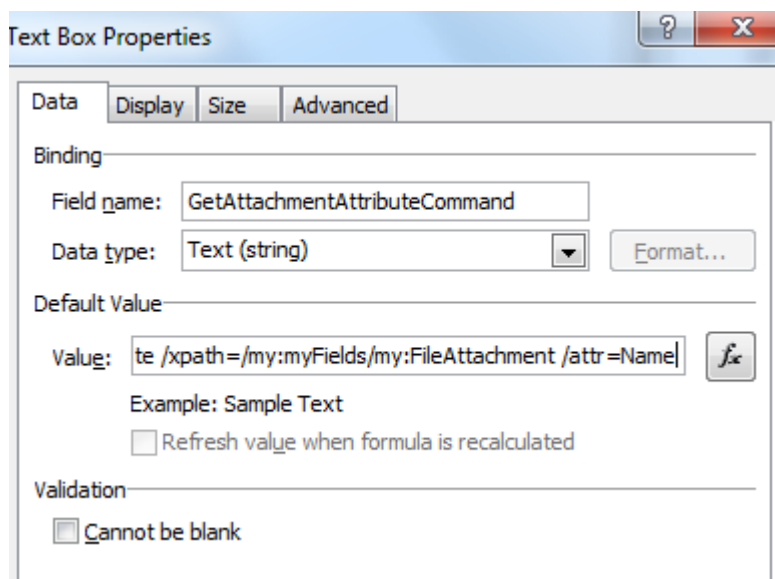


- 3) Set a **Value:** to point to the **GetAttachmentAttributeCommand** field from the main data source. Click **OK**.



- 4) Right click on the **GetAttachmentAttributeCommand**, and select **Text Box Properties...** and enter the value:

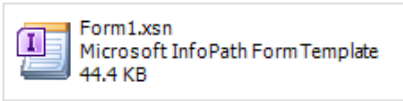
GetAttachmentAttribute /xpath=/my:myFields/my:FileAttachment /attr=Name



- 5) Click **OK**.
- 6) Now drag and drop the QdabraRules **Result**, **Success**, and **Error** fields into the view.
- 7) Preview the form.
- 8) Attach a file or a picture in a file attachment control.



9) Click **GetAttachmentAttribute** button to execute the command.

Attach a file: 

Select attribute value:

GetAttachmentAttribute Command: `GetAttachmentAttribute /xpath=/my:myFields/my:FileAttachment /attr=Name`

GetAttachmentAttribute

Result:

Error:

Success

10) You will see the file or picture name in the result field.

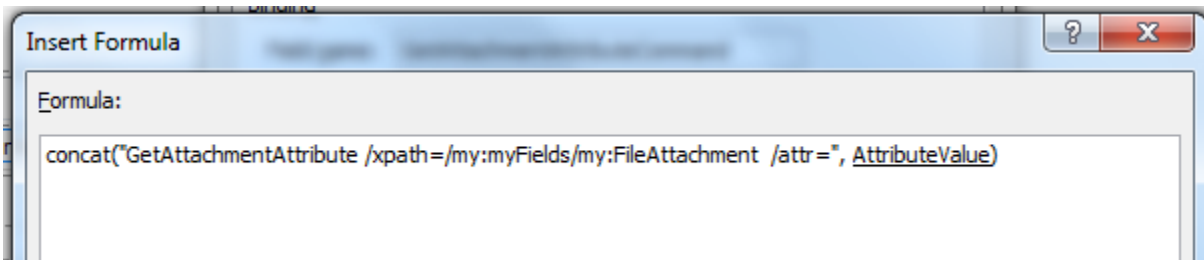
11) Change the /attr param to **Ext**, **Size**, or **File** and click the button again to obtain a different attribute.

Similarly you can also get specific attributes of a file attachment from a secondary data source using **/dsname** parameter.

You can also use a **concat** command if you wish to use specific fields with dynamic values in your command parameters. Let's replace **GetAttachmentAttributeCommand** field with a **concat** command.

12) In design mode, right click on **GetAttachmentAttributeCommand** field, and select **Text Box Properties...** to add a new parameter to the command. Your command should look similar to the below one:

concat("GetAttachmentAttribute /xpath=/my:myFields/my:FileAttachment /attr=", AttributeValue)



13) In the **AttributeValue** dropdown box, add four entries as shown below:



Drop-Down List Box Properties

Data Size Advanced

Binding

Field name: AttributeValue

Data type: Text (string)

Validation

Cannot be blank

List box choices

Enter choices manually

Get choices from fields in this form

Get choices from an external data source

Value	Display Name	Default
Name	Name	Yes
Ext	Ext	
Size	Size	
File	File	


Add...
Modify...
Remove
Move Up
Move Down
Set Default

OK Cancel Apply

- 14) Save and preview the form.
- 15) Attach a file or a picture in a file attachment control.
- 16) Select one of the attribute values from the dropdown list.
- 17) Click **GetAttachmentAttribute** button.



Attach a file:

 Blossom.jpg HPTSMSMVP.JPG 1.42 MB

Select attribute value:

GetAttachmentAttribute Command:

```
GetAttachmentAttribute /xpath=/my:myFields/my:FileAttachment /attr=Ext
```

GetAttachmentAttribute

Result:

Error:

Success