



Active Directory Standalone Tool Installation Guide

Qdabra’s Active Directory Standalone Tool, like the Active Directory Web Service within Database Accelerator (DBXL), contains various methods which are discussed in the [Active Directory User Guide](#).

CONTENTS

REQUIREMENTS	1
INSTALLATION.....	2
START THE INSTALLER	2
INSTALLATION ADDRESS	3
LDAP PATH	4
AD STANDALONE TOOL CONFIGURATION	5
CHANGE THE LDAP PATH	6
SUPPORT	7

REQUIREMENTS

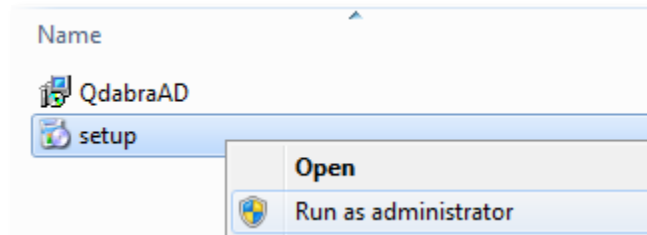
1. Active Directory Standalone should only be installed on machines that are part of a domain. This can be verified in **My Computer > Properties > Computer Name**. Workgroups are inadequate for this web service.
2. Microsoft .NET Framework 4 Client Profile is required to run the Active Directory Web Service. If you don’t have it installed, the ADWS installer will detect it and automatically install it for you.



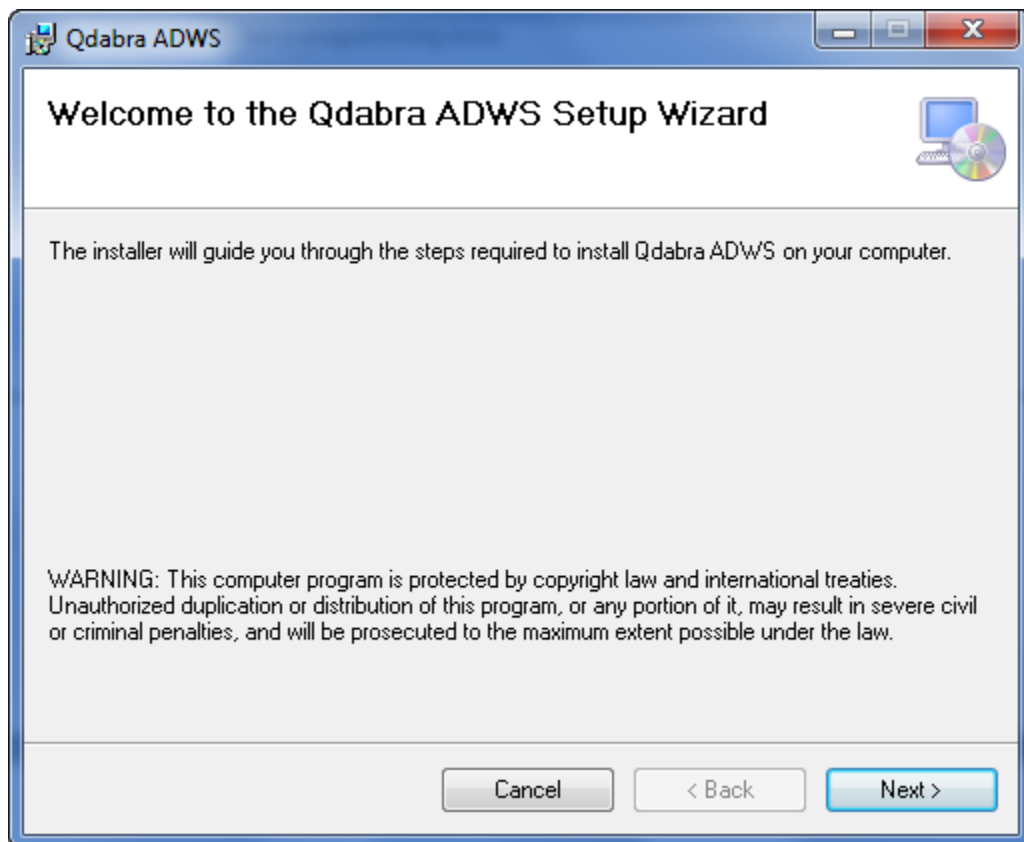
INSTALLATION

START THE INSTALLER

1. Double-click on setup.exe. Note that in some operating systems, such as Windows Vista or Windows Server 2008, you must right click on setup.exe and select **Run as Administrator**.

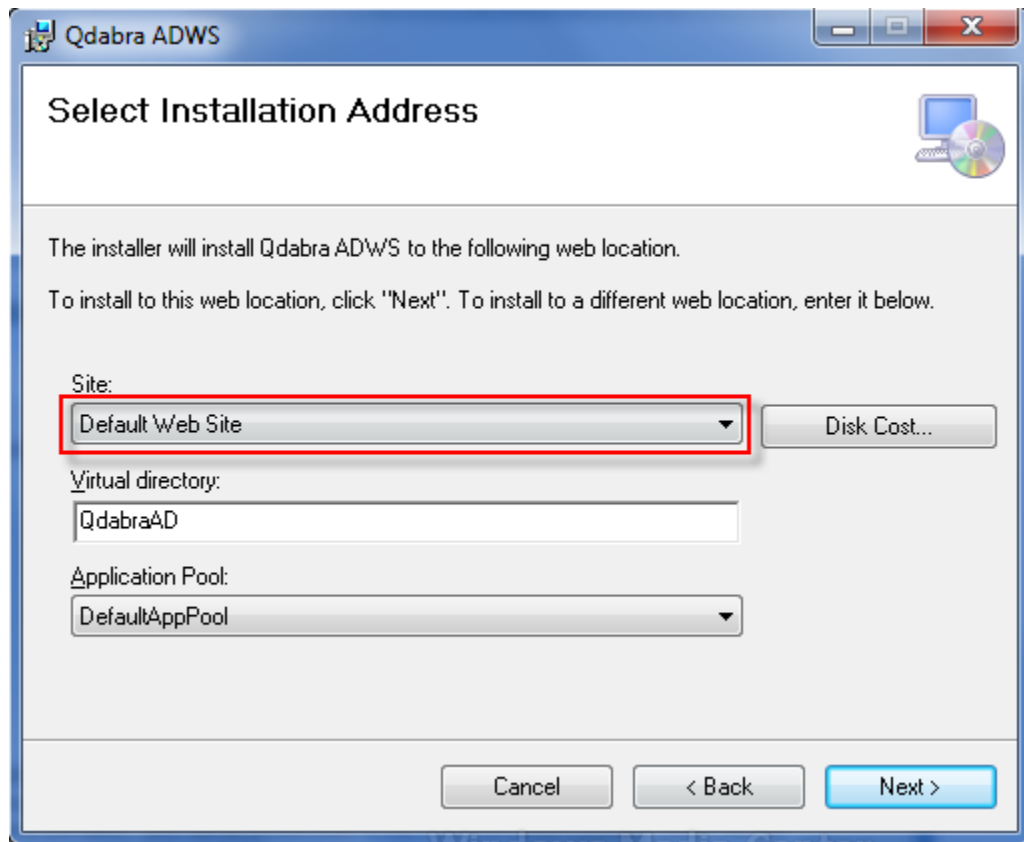


2. Click **Next** in the **Welcome** screen.

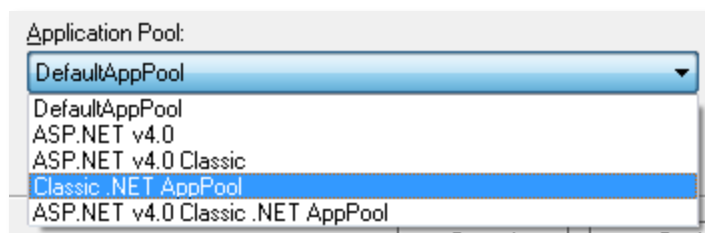


INSTALLATION ADDRESS

1. In the **Installation Address** screen, you will find a dropdown listing all sites. This defaults to **Default Web Site**. If you wish to select a specific site, please choose from the dropdown list. Make sure to select the correct site for installation.



2. The **Virtual Directory** is set to QdabraAD by default, but this can be changed if desired.
3. Select the Application Pool you want to use. By default, the Application Pool is set to the **DefaultAppPool**. Note that Active Directory will work both on classic and integrated pipeline mode.

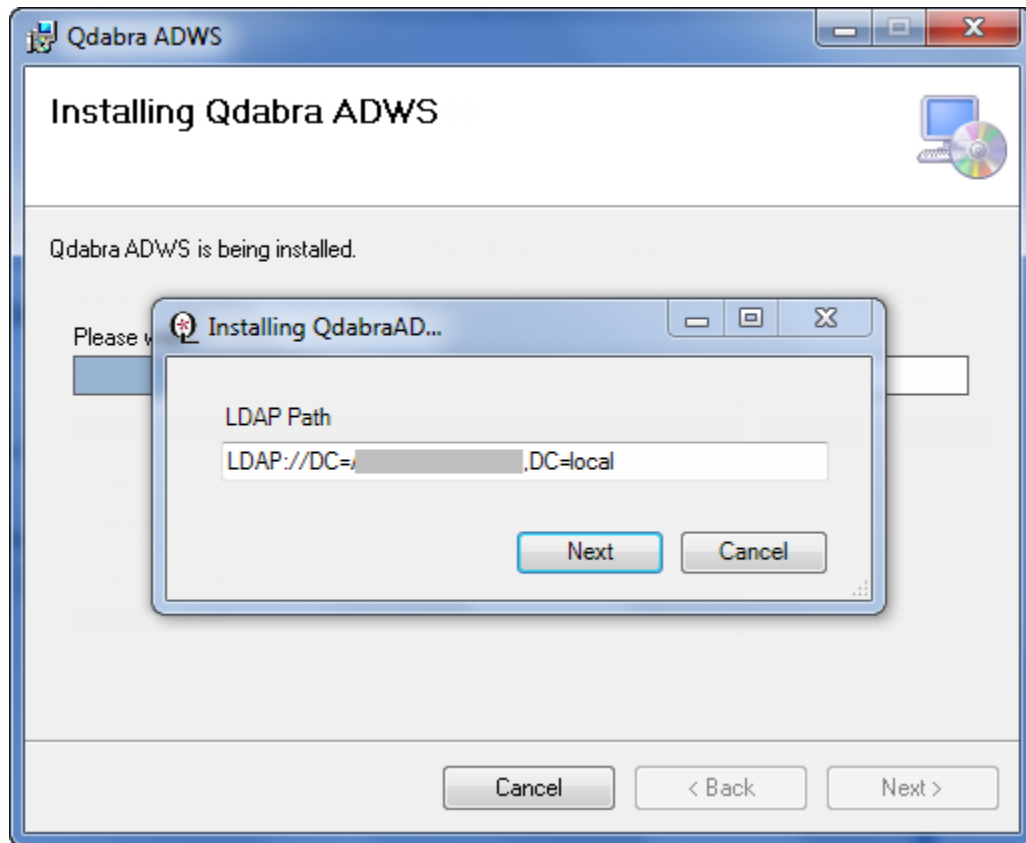


4. Click **Next**, and in the **Confirm Installation** screen, click **Next** again.



LDAP PATH

1. You will see a bar indicating the progress of the installation. During this process, a small window will appear asking you to confirm/enter the LDAP Path. In the **LDAP Path** textbox, the default value is populated from the system when a domain controller can be contacted. If the domain controller cannot be contacted, the LDAP Path will default to LDAP://DC=domain. If that's the case, you'll need to manually enter the LDAP Path (for example: **LDAP://DC=DomainName,DC=com**).



2. After entering the correct LDAP Path, click **Next**.
3. The progress bar will continue and finish the installation. Click **Close** to end the installation.
4. Before installation is finished, the installer will open your browser and navigate to <http://<YourMachineName>/QdabraAD/AdUserInfo.asmx>.
5. This URL is the access path to the Active Directory Web Service. In this page, you can view the list of available methods:



AdUserInfo

The following operations are supported. For a formal definition, please review the [Service Description](#).

- [FindUsersByAlias](#)
Attempts to find any users with an alias matching the specified search string.
- [FindUsersByName](#)
Attempts to find any users with a name matching the specified search string.
- [GetAllUsers](#)
Returns all corresponding users in the directory system, given the specified filter
- [GetEmployeesForManager](#)
Returns a list of employees that have a manager with the specified alias.
- [GetGroupsForUser](#)
Returns a list of the groups to which the current user belongs.
- [GetManagerAlias](#)
Returns the alias for a user's manager if one is set.
- [GetMembersOfGroup](#)
Returns the alias, display name and email address of group members.
- [GetMyInfo](#)
Gives the Active Directory properties of the currently Logged In user.
- [GetUserInfo](#)
Gives the Active Directory properties of the specified user name.
- [IsUserMemberOfGroup](#)
Returns the alias, display name and email address of group members.

You can now use the Active Directory Web Service methods in your InfoPath form. Please refer to the [Active Directory Web Service User Guide](#) for a tutorial on how to use these methods.

AD STANDALONE TOOL CONFIGURATION

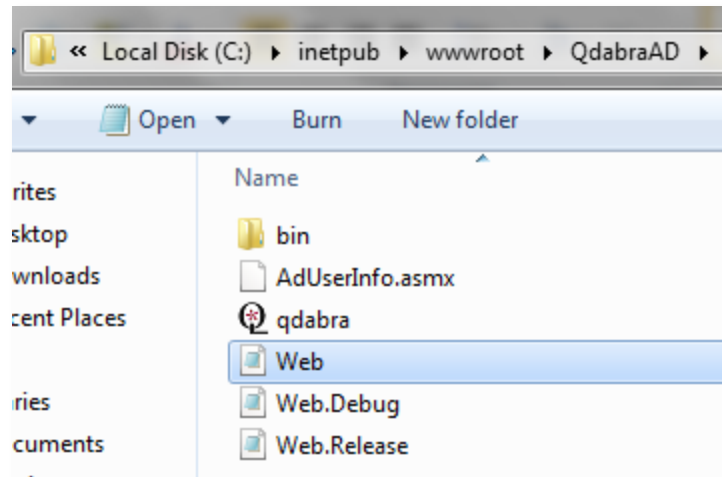
If you need to configure the tool, navigate to `C:\inetpub\wwwroot\QdabraAD`, where you will find a Web.config file.



<http://www.qdabra.com>

Last updated on 1/5/2013 4:32 PM

Copyright © 2011 Autonomy Systems, LLC. All rights reserved.



You can open this file in a Notepad or any text editor of your choice. Its simple contents, shown below, allow you to change the configuration settings.

```

File Edit Format View Help
<?xml version="1.0" encoding="utf-8"?>
<configuration>
  <configSections>
    <sectionGroup name="qdabra.dbx1">
      <section name="adService"
type="Qdabra.ActiveDirectory.Configuration.ADServiceSection, Qdabra.ActiveDirectory" />
    </sectionGroup>
  </configSections>
  <qdabra.dbx1>
    <adService path="LDAP://DC=DomainName,DC=local">
    </adService>
  </qdabra.dbx1>
  <system.web>
    <customErrors mode="off" />
    <authentication mode="windows" />
    <authorization>
      <allow users="*" />
      <deny users="?" />
    </authorization>
    <identity impersonate="false" />
    <trust level="Full" />
    <httpModules>
      <clear />
      <add name="OutputCache"
type="System.Web.Caching.OutputCacheModule" />
      <add name="WindowsAuthentication"
type="System.Web.Security.WindowsAuthenticationModule" />
    </httpModules>
  </system.web>
</configuration>

```

CHANGE THE LDAP PATH

You can change the LDAP Path by changing the adService path key in the configuration file.

```

<qdabra.dbx1>
  <adService path="LDAP://DC=DomainName,DC=local">
  </adService>
</qdabra.dbx1>

```



<http://www.qdabra.com>

Last updated on 1/5/2013 4:32 PM

Copyright © 2011 Autonomy Systems, LLC. All rights reserved.

SUPPORT

If you have questions about the information in this document, please contact us for assistance. Licensed customers contact us via Support@Qdabra.com. Alternatively, please use the InfoPathDev.com Qdabra Product support forums to request help.



<http://www.qdabra.com>

Last updated on 1/5/2013 4:32 PM

Copyright © 2011 Autonomy Systems, LLC. All rights reserved.