



LAST UPDATED: 2017-12-17

---

# DBXL v3.2 Installation Guide

---

Thank you for downloading DBXL. The goal of this document is to describe the deployment scenario.

This document will guide you through the installation of DBXL.

If you are upgrading from a previous version of DBXL, please contact [Qdabra support](#).

Select a Deployment Scenario .....	2
Upgrading from a previous version .....	3
Installation package.....	3
Installation step by step .....	9
Post installation .....	15
Qdabra DBXL PDF Rendering Service.....	20
Create a PDF Mapping .....	30
Enabling the REF ID.....	41
Support .....	42



## SELECT A DEPLOYMENT SCENARIO

Before installing DBXL, please select your deployment scenario:

- SharePoint on premise – Event Receiver
- SharePoint Office 365 – Remote Event Receiver
- No SharePoint – Satellite

If you have questions about the scenarios below please [contact Qdabra Software](#).

### EVENT RECEIVER

Use this scenario to deploy to an on premise SharePoint site.

Perform the following steps:

1. Install and configure DBXL on a server or virtual machine separate from SharePoint
2. Install the DBXL Event Receiver (ER) on your SharePoint On Premises Server
3. Configure the ER to synchronize forms to DBXL

The Event Receiver monitors your SharePoint form library for changes. Based on configuration settings, forms are synchronized with DBXL.

The main benefits of this scenario are

- Integrates with SharePoint On Premise
- No changes to InfoPath Form Template (XSN) required
- Synchronizes XML forms submitted to a document library. Supports:
  - o InfoPath forms
  - o Formotus forms
  - o FormsViewer forms

### REMOTE EVENT RECEIVER

Use this scenario to deploy to an Office 365 site.

Perform the following steps:

1. Install and configure DBXL on an Windows Azure Virtual Machine (A3 recommended), or  
Install and configure DBXL on a server exposed to the Internet (accessible from O365)
2. Install the DBXL Remote Event Receiver (RER) and DBXL Settings apps to on your Office 365 site
3. Configure the ER or RER to synchronize forms to DBXL



The Remote Event Receiver monitors your SharePoint form library for changes. Based on configuration settings, forms are synchronized with DBXL.

The main benefits of this scenario are

- Integrates with Office 365
- Supports multiple DBXL backend servers
- No changes to InfoPath Form Template (XSN) required
- Synchronizes XML forms submitted to a document library.
  - o InfoPath forms
  - o Formotus forms
  - o FormsViewer forms

## SATELLITE

Use this scenario to deploy to a server accessible locally over an intranet or remotely via the internet.

Perform the following steps:

1. Install and configure DBXL on an Windows Azure Virtual Machine (A3 recommended), or  
Install and configure DBXL on a server exposed to your network
2. Modify your forms or Web pages to submit directly to the DBXL Web services

The main benefits of this scenario are

- No SharePoint required
- Supports submit from
  - o InfoPath forms
  - o Formotus forms
  - o Web pages

## UPGRADING FROM A PREVIOUS VERSION

In prior versions of SharePoint (for example, 2010), Qdabra supported an “Integrated” installation scenario with DBXL on the same server as SharePoint. Starting with SharePoint 2013, this “Integrated” scenario is no longer supported. DBXL comes with an Event Receiver (or Remote Event Receiver) to allow SharePoint libraries to synchronize with DBXL running on a separate server.

If you are migrating from an “Integrated” scenario please contact Qdabra support (Support@Qdabra.com) to schedule free upgrade assistance.

## INSTALLATION PACKAGE

When you download the DBXL Installation package, you should find the following contents:



<http://www.qdabra.com>

Last updated on 12/17/2017 11:31 PM

Copyright © 2017 Autonomy Systems, LLC. All rights reserved.

- This document – the DBXL Installation Guide (PDF)
- A folder called DBXL Server, with the following contents:
  - NET4 folder with installation files (MSI and executable)

Once DBXL is installed, the default.htm page will contain a link to the Getting Started tutorial.

## SERVER REQUIREMENTS

The installation package requires .NET 4.5.1.

To verify you have the correct .NET library installed click the following link and walk through the steps:

[https://msdn.microsoft.com/en-us/library/hh925568\(v=vs.110\).aspx#net\\_b](https://msdn.microsoft.com/en-us/library/hh925568(v=vs.110).aspx#net_b)

The server where DBXL will be installed needs to meet the following requirements:

- **Domain**
  - DBXL should only be installed on machines that are part of a domain. This can be verified in My Computer > Properties > Computer Name.
  - If you choose to install DBXL on a machine that is not joined to a domain, some aspects of DBXL that deal with authentication (such as the Active Directory web service) will not work.
- **SQL:**
  - DBXL is compatible with SQL 2005 (including Express edition), SQL 2008 (including Express edition) and 2012. It has not been tested with MSDE or SQL Compact, and it is not compatible with the Windows Internal Database.
  - Note that for all of DBXL's search methods to work, Full Text Search should be installed. If Full Text Search is not installed, DBXL will install (and log a warning in the eventvwr).
  - Qdabra recommends that the user installing DBXL be granted sysadmin permission on SQL. However, there are two installation scenarios that should work without users needing the sysadmin role:
    - SQL DBA pre-creates the databases and grants that user (who is installing DBXL) db\_owner.
    - User has dbcreator permission.
- **SharePoint**
  - In the past, Qdabra Software recommended installing DBXL on the SharePoint – 80 site. This is no longer the default scenario.
  - DBXL should be installed on a separate server. However, if a separate server is not available, DBXL can be installed on a separate site (on the SharePoint server).
  - DBXL has been tested with SharePoint 2010 and 2013. It is compatible with SharePoint 2007 and 2016
- **IIS**
  - DBXL requires IIS 5.1 or newer, configured to work with .NET Framework 4.5.1



<http://www.qdabra.com>

Last updated on 12/17/2017 11:31 PM

Copyright © 2017 Autonomy Systems, LLC. All rights reserved.

- For IIS 7.0, all IIS 6.0 compatibility features must be installed.
- The DBXL installer adds the DBXL App pool account to WSS\_WPG (when DBXL is installed on a SharePoint site) or IIS\_WPG (when DBXL is installed on a non-SharePoint site).
- When setting up the server, under Windows components application server, there is an option to allow ASP.Net applications. This needs to be installed in order for the software to install and run correctly.
- The DBXL installer grants db\_datareader and db\_datawriter SQL permissions to the application pool identity.
- Anonymous Authentication must be disabled on the site where DBXL is going to be installed; otherwise, the installer might fail. Windows Authentication must be enabled on the site; otherwise the installer will stop with the following message. Once Windows Authentication is enabled, you may click Retry on the dialog box.



- DBXL has not been tested with Windows Server 2003.
- The DBXL Installation will fail on sites that have the WebDAV Publishing IIS role installed. If WebDav publishing shows as *Installed*, the DBXL installer will return a message such as the one shown in the screenshot below.






Note that uninstalling WebDAV may require a server restart. If one is needed, you will need to click Abort in the dialog shown above, then restart the DBXL installer after the server restarts.

Below is a screenshot of the IIS roles installed on one of Qdabra's internal servers, as an example.



Web Server (IIS)	
	Provides a reliable, manageable, and scalable Web application infras
<b>Role Services:</b> 41 installed	
Role Service	Status
Web Server	Installed
Common HTTP Features	Installed
Static Content	Installed
Default Document	Installed
Directory Browsing	Installed
HTTP Errors	Installed
HTTP Redirection	Installed
WebDAV Publishing	Not installed
Application Development	Installed
ASP.NET	Installed
.NET Extensibility	Installed
ASP	Installed
CGI	Installed
ISAPI Extensions	Installed
ISAPI Filters	Installed
Server Side Includes	Installed
Health and Diagnostics	Installed
HTTP Logging	Installed
Logging Tools	Installed
Request Monitor	Installed
Tracing	Installed
Custom Logging	Not installed
ODBC Logging	Not installed
Security	Installed
Basic Authentication	Installed
Windows Authentication	Installed
Digest Authentication	Installed
Client Certificate Mapping Authentication	Installed
IIS Client Certificate Mapping Authentication	Installed
URL Authorization	Installed
Request Filtering	Installed
IP and Domain Restrictions	Installed
Performance	Installed
Static Content Compression	Installed
Dynamic Content Compression	Installed
Management Tools	Installed
IIS Management Console	Installed
IIS Management Scripts and Tools	Installed
Management Service	Installed
IIS 6 Management Compatibility	Installed
IIS 6 Metabase Compatibility	Installed
IIS 6 WMI Compatibility	Installed
IIS 6 Scripting Tools	Installed
IIS 6 Management Console	Installed
FTP Server	Not installed
FTP Service	Not installed
FTP Extensibility	Not installed
IIS Hostable Web Core	Not installed



<http://www>

Last updated on 12/17/2017 11:31 PM

Copyright © 2017 Autonomy Systems, LLC. All rights reserved.

## CLIENT REQUIREMENTS

The client machine is the computer that will access the DBXL Administration Page and Web services.

- **Permissions:** Ability to authenticate with the server where DBXL will be installed.
- **Browser:** Internet Explorer 11 or higher. Chrome will also work.

## WINDOWS OR SQL AUTHENTICATION?

DBXL may use either Windows Authentication or SQL Server Authentication to connect to the database specified by the installer. The connection string that DBXL uses to connect to the SQL Server is stored in the web.config file of the web service.

When using Windows Authentication, this connection string is left unencrypted since it does not contain password information. The DBXL service account will be added to the db\_datareader and db\_datawriter roles for the DBXL databases during installation. The user account used to run the DBXL installation must be a sysadmin of the SQL Server instance.

If using a local account (e.g. Network Service) and a remote SQL instance, the machine account (e.g. <Domain>\<Machine>\$) is added to the db\_datareader and db\_datawriter role.

For SQL Server Authentication the connection string is encrypted to prevent unauthorized users from obtaining the password information. In addition, when using SQL Authentication, the SQL account specified must have database creation permission during the installation process. Once installed, the only permissions required are membership in db\_datareader and db\_datawriter roles.

	SQL Authentication	Windows Authentication
<b>Local SQL Server</b>	<ul style="list-style-type: none"> <li>• Connection string is encrypted</li> <li>• SQL and Web Service users are separate</li> </ul>	<ul style="list-style-type: none"> <li>• Connection string is not encrypted</li> <li>• SQL and Web Service users are the same</li> </ul>
<b>Remote SQL Server</b>	<ul style="list-style-type: none"> <li>• Same as Local SQL Server</li> <li>• Connection string for QueryDB connections must be declared (unencrypted) in web.config.</li> </ul>	<ul style="list-style-type: none"> <li>• Connection string is not encrypted</li> <li>• User &lt;Domain&gt;\&lt;Machine&gt;\$ is added to the remote SQL Server as a db_owner.</li> </ul>

Independent of the authentication method chosen, the user specified for connecting to the SQL Server is added to the QdabraDBXL and QdabraUtility databases in the db\_datareader and db\_datawriter roles.



## INSTALLATION STEP BY STEP

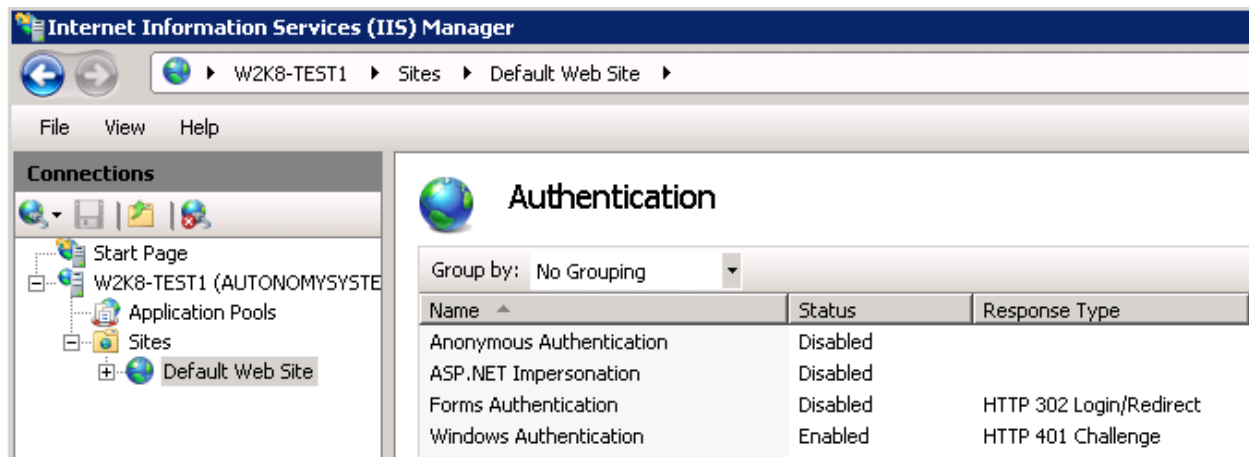
This section contains step-by-step instructions for the installation of DBXL.

### CREATE THE SITE

This section is only required if following the Event Receiver scenario.

On the server where DBXL will be installed, a new site will be needed (if one does not exist already). Qdabra Software recommends installing DBXL on a standalone IIS web site that does not host SharePoint.

1. Create a new IIS site that uses Windows Authentication. Anonymous Authentication must be disabled.

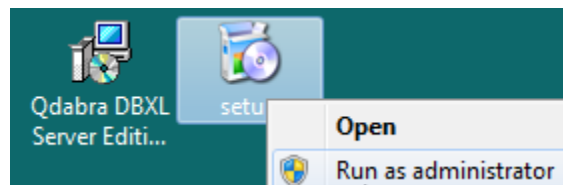


2. Check permissions on the site's new folder and compare these to the permissions on the wwwroot folder. Add any missing permissions.
3. Check the firewall to ensure outside users can communicate with the site.

Please make sure that your server has .NET Framework 4.5.1 installed.

### START THE INSTALLER

4. Right click on setup.exe and select **Run as Administrator**.



<http://www.qdabra.com>

Last updated on 12/17/2017 11:31 PM

Copyright © 2017 Autonomy Systems, LLC. All rights reserved.

5. Click **Next** in the **Welcome screen**.
6. After reviewing the **End User License Agreement**, select **I Agree** and click **Next**.

## INSTALLATION ADDRESS

7. In the **Installation Address** screen, you will find a dropdown listing all sites. Select the desired **Site** for installation from the dropdown.
  - Note that **all sites (even sites that are stopped)** are listed in this screen. Make sure to select the correct site for installation.
  - Use IIS Manager to check the available sites to confirm that the correct site is being selected and that the site is not stopped.

For the Event Receiver scenario, select the new site created in the section above.

8. The **Virtual Directory** is set to QdabraWebService by default, but this can be changed if desired.
9. Click **Next**, and in the **Confirm Installation** screen, click **Next** again.

You will see a bar indicating the progress of the installation. Once completed, you will see a screen with various tabs. The following sections describe each tab.

## SITE

The Site tab allows you to select the site URL.

10. From the **Site Url** dropdown, select the desired site.
  - The **Site Url** dropdown will show a list of combinations of SSL and host headers defined in IIS.
    - If you select one of the options that does not use the machine name, the **Binding Detail** section will be disabled.
    - If you select one of the options that uses the machine name, the **Binding Detail** section will allow you to override the host header to be something not specified in IIS.
    - If the site is using an alias, you will need to specify it in the host header field during installation.
  - When installing DBXL in some environments, the default **Site Url** will be SSL. Do not select the HTTPS site unless you have configured a certificate.
  - If the site will be accessed via HTTPS, you will need to configure the website for SSL before installing DBXL.
  - If a fully qualified domain name is being used, that value should be entered in the hostname field during installation.



- This tab will also show you the expiration date for the trial license. If you notice that the trial license has expired, please download the most recent version from Qdabra.com or contact [support@qdabra.com](mailto:support@qdabra.com).

11. Click **Next** to proceed to the following tab.

## LOG ON TAB

The **Log On** tab allows you to indicate the account which DBXL will run as.

12. Select between **Predefined** and **Configurable** account credentials.

- If you select **Predefined**, you will not need to provide credentials.

The Qdabra™ Database Accelerator will run under these account credentials. The installer will attempt to add this logon to SQL Server if using Windows Authentication account after installation by changing the DbxlAppPool identity in IIS. This account must be a member of the IIS\_WPG security group.

Predefined

- If you select **Configurable**, you must provide an **Account** and **Password**.

Configurable

Account:

Password:

13. Click **Next** to proceed to the following tab.

## DOCUMENT SECURITY

In the **Document Security** tab you can set up permissions for DBXL. The DBXL installer automatically creates a local group called DbxlAdmins. You can add users to the DbxlAdmins group after installation has completed; the member of this group will be able to manage licenses, add document types, and manage access permissions to DBXL document types.

If you want to use your own group, make sure that you (the user installing DBXL) have been added to

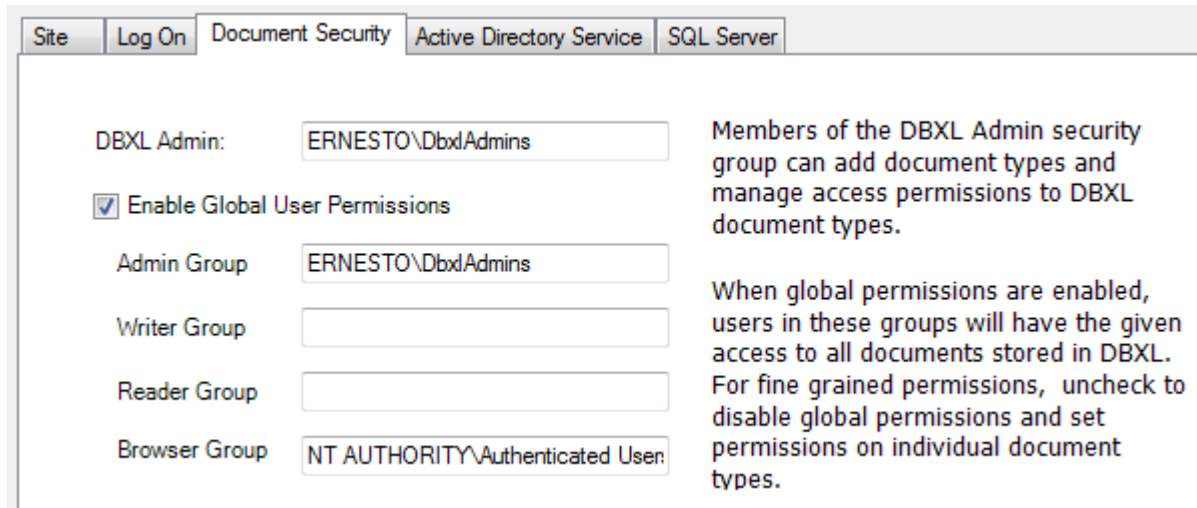


<http://www.qdabra.com>

Last updated on 12/17/2017 11:31 PM

Copyright © 2017 Autonomy Systems, LLC. All rights reserved.

the group.



Site Log On Document Security Active Directory Service SQL Server

DBXL Admin: ERNESTO\DbxlAdmins

Enable Global User Permissions

Admin Group ERNESTO\DbxlAdmins

Writer Group

Reader Group

Browser Group NT AUTHORITY\Authenticated User

Members of the DBXL Admin security group can add document types and manage access permissions to DBXL document types.

When global permissions are enabled, users in these groups will have the given access to all documents stored in DBXL. For fine grained permissions, uncheck to disable global permissions and set permissions on individual document types.

This screen has other options, such as the **Enable Global User Permissions** checkbox. If you uncheck **Enable Global User Permissions** checkbox, you will have to set permissions on every individual document type, since the Global Permissions will not be enforced. Disabling global permissions does not make DBXL “wide-open”. On the contrary, it restricts access to DBXL.

14. Click **Next** to proceed to the following tab.

## ACTIVE DIRECTORY SERVICE TAB

The **Active Directory Service** is used to obtain username and other Active Directory Information. In the **LDAP Path** textbox, the default value is populated from the system when a domain controller can be contacted.

15. If the domain controller cannot be contacted, the LDAP Path will default to LDAP://DC=domain. You'll need to manually enter the LDAP Path (for example: **LDAP://DC=DomainName,DC=com**).



Site	Log On	Document Security	Active Directory Service	SQL Server
------	--------	-------------------	--------------------------	------------

The Active Directory Service provides InfoPath forms with a quick and easy way to obtain username and other Active Directory information.

LDAP Path:

Enter the LDAP path to be used to resolve Active Directory inquiries to the Active Directory Service (ADService.asmx). The default value is populated from the system. NOTE: The default value is only available when a domain controller can be contacted.

16. Click on **Next** to go to the following tab.

## SQL SERVER TAB

In the **SQL Server** tab, indicate the database where DBXL will store its data.

17. Select the **SQL Server name**. The dropdown will list all local SQL instances that were detected by the installer. For example, in the case of a SQL Express installation on the same machine, this will be **(LOCAL)\SQLEXPRESS**. You may still type in the name of a remote SQL instance, if desired, or if the installer fails to list the correct SQL instance.
18. Select the **Authentication** type used to access the SQL server from the dropdown
  - If you select **Windows Authentication**, no credentials will be necessary. The account of the user installing DBXL will be used to connect and create the database and thus requires sysadmin permission. The account used for the DBXL application pool will be granted db\_datareader and db\_datawriter permission during setup.
  - If you select **SQL Server Authentication**, fill out the **User name**, **Password** and **Confirm password** fields. The SQL account is used to create the database, and thus Qdabra recommends granting sysadmin rights. Once the database is created and installation has completed, the user rights can be reduced to db\_datareader and db\_datawriter roles.

19. Enter the **Database** where DBXL documents will be stored.

Installation of DBXL will fail and produce an error message when the database name entered contains a space. By default, the database names are **QdabraDBXL** and **QdabraUtility**. You may change these, but you must use database names that do not contain spaces.



<http://www.qdabra.com>

Last updated on 12/17/2017 11:31 PM

Copyright © 2017 Autonomy Systems, LLC. All rights reserved.

This tab contains one more option, **Use existing databases**. You only need to use this if you had a previous installation and want to reuse the same databases.

## FINISH THE INSTALLER

20. Click on **Finish** to complete the installation.

You will see another bar, called **Configuration Status**, indicating the progress of the installer. This status will change as the installation executes. When it finishes, click **Close** in the **Installation Complete** screen. Internet Explorer will open showing default.htm, from where you can access the **Forms, Documents** and **Web service descriptions**. We recommend adding a bookmark to this page (default.htm).





## DBXL ADMINISTRATION TOOL

The DBXL Administration Tool, also known as DAT, is automatically set up during installation. You can verify that DAT was set up correctly by following these steps:

1. Open the default page: <http://<servername>/QdabraWebService/default.htm>. The servername will depend on the URL where DBXL was installed (from the Site tab during installation).
2. Click on the **DBXL Administration Tool** link.

The screenshot shows the Qdabra Database Accelerator Control Panel. At the top, there is a navigation bar with links for HOME, Catalog, and License. Below the navigation bar is the Qdabra Software logo and the title "Database Accelerator Control Panel". Under the heading "Configure Your Form", there is a list of items, with "DBXL Administration Tool - Your dashboard to manage DBXL" highlighted by a red box. Below this are sections for "Tools" and "Documentation", each containing a list of links to various resources.

HOME Catalog License

**QDABRA**  
SOFTWARE

## Database Accelerator Control Panel

### Configure Your Form

- **DBXL Administration Tool** - Your dashboard to manage DBXL

### Tools

- [Qdabra Query Builder](#) - see [Installing and Opening Query Builder](#) for assistance
- [Qdabra Report Builder](#)
- [DBXL Event Receiver](#) (add link here)

### Documentation

- [Deployment Guide](#)
- [Installation Guide](#)
- [Getting Started](#) - Supporting files used by Getting Started tutorial
- [Release Notes](#)
- [DBXL PDF Rendering Service Configuration](#)
- [DBXL Azure Installation Guide](#) (add link here)
- [QueryDBwithUserKey](#) (add link here)
- [Online Product Documentation](#) - For the most recent documentation updates, visit Qdabra's website.



<http://www.qdabra.com>

Last updated on 12/17/2017 11:31 PM

Copyright © 2017 Autonomy Systems, LLC. All rights reserved.

SYSTEM DOCUMENT TYPES

In DAT, verify that the system document types (needed by DBXL to operate) were created during installation. Expand the section for System document types. You should see the following:

Home
Catalog
DocType
Tools
License

Qdabra DBXL

 Refresh List  
 New Configuration

Administration Tool
Catalog

Show Descriptions

Group & Name	Form Version	# Docs	Edit
[+] Test Group			
[+] Uncategorized forms			

System Document Types
▼

Name	Form Version	# Docs	Edit
QdAttachment	1.0.0.9	0	
QdCategory	1.0.0.1032	0	
QdDocumentIndexFields	1.0.0.27	47	
QdDocumentType	1.0.0.25	47	
QdDocumentTypePermissions	1.0.0.24	47	
QdDocumentTypeProperties	1.0.0.25	47	
QdMapping	1.0.0.28	47	
QdNodeNamespaces	1.0.0.20	47	
QdRefIdInfo	1.0.0.17	45	
QdSharePointListMaps		54	

« 1 2 3 »

powered by  
**Qdabra DBXL**

Copyright © 2016 Qdabra Software. All rights reserved.  
 Qdabra and the Qdabra logo are trademarks of Autonomy Systems LLC.  
[www.qdabra.com](http://www.qdabra.com)

English ▼




LICENSING

DBXL comes with a trial license that is automatically configured during installation. Verify that the license was configured. In DAT, click on **Configure Licenses**. If you do not see a DBXL Trial License already configured AND you are a member of the DBXL Admins group, your installation has run into issues. Please contact Qdabra Software.



Home Catalog DocType Tools **License**

Qdabra DBXL  
Administration Tool **Manage License**

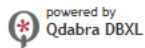
**Add License Pack**

License File  Browse... Contact Email   Add License Pack

**Installed License Packs**

Expires	Serial Number	Name	Contact Email	Doc. Types	Docs	ADWS	Del
2017-06-02	DBXL3.1-2016060205465647537	Qdabra Software	Support@Qdabra.com	20	1000000000	<input checked="" type="checkbox"/>	
2017-06-09	DBXL3.1-2016060910412119106	Qdabra Software	Kaoru.Okumura@Qdabra.com	1000000	1000000000	<input checked="" type="checkbox"/>	

Total Installed:	1000020	2000000000
In Use:	20	20612
Remaining:	1000000	1999979388



Copyright © 2016 Qdabra Software. All rights reserved.  
Qdabra and the Qdabra logo are trademarks of Autonomy Systems LLC.  
[www.qdabra.com](http://www.qdabra.com)

English 



<http://www.qdabra.com>

Last updated on 12/17/2017 11:31 PM

Copyright © 2017 Autonomy Systems, LLC. All rights reserved.

## CLEAN UP A PRE-EXISTING INSTALLATION

If you encountered issues during an installation of DBXL, you might need to cleanup a previously installed instance before running the installer again. Here are some items to check before trying the installer again:

1. Are there app pools and QdabraWebService directories? Check this using the IIS Manager and remove if present. The Dbxl App pool name will be DbxlAppPoolXXX where XXX is the website ID.
2. Use SQL Server Management Studio to delete any databases that were created (namely QdabraDBXL and QdabraUtility).
3. After performing the above cleanup steps, perform an iisreset, and then try reinstalling DBXL.



## QDABRA DBXL PDF RENDERING SERVICE

The DBXL PDF Rendering Service is a feature that renders documents as PDF files and emails them as attachments or downloadable links. You can also synchronize these PDF files to OneDrive to increase form integration. For example, a form can have a Print button that submits and renders the data as PDF and then a link can be displayed in the form for users to click on. This reduces the steps to print a document as PDF and send it.

This section will guide you through the installation of DBXL Rendering Service. Note:

### PREREQUISITES

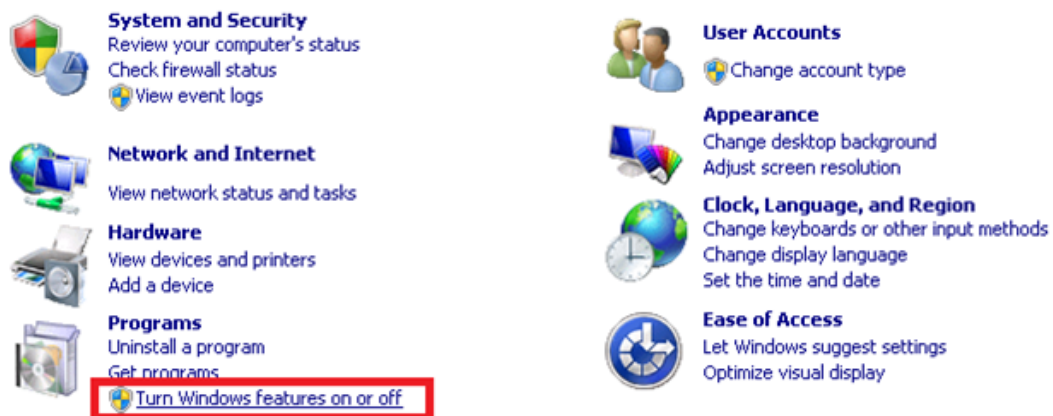
The Qdabra DBXL Rendering Service requires the following components

- IIS SMTP Service is a component for forwarding e-mail messages to an SMTP server for delivery.
- DBXL Administration Tool (installed above)

### INSTALLING THE SMTP SERVICE

The SMTP service is not installed by default with IIS. You must install the SMTP service using Control Panel. Installing the SMTP service creates a default SMTP configuration that you can then customize by using IIS Manager.

On the Start menu, click Control Panel, double-click Add or Remove Programs, and then click Turn Windows features on or off.



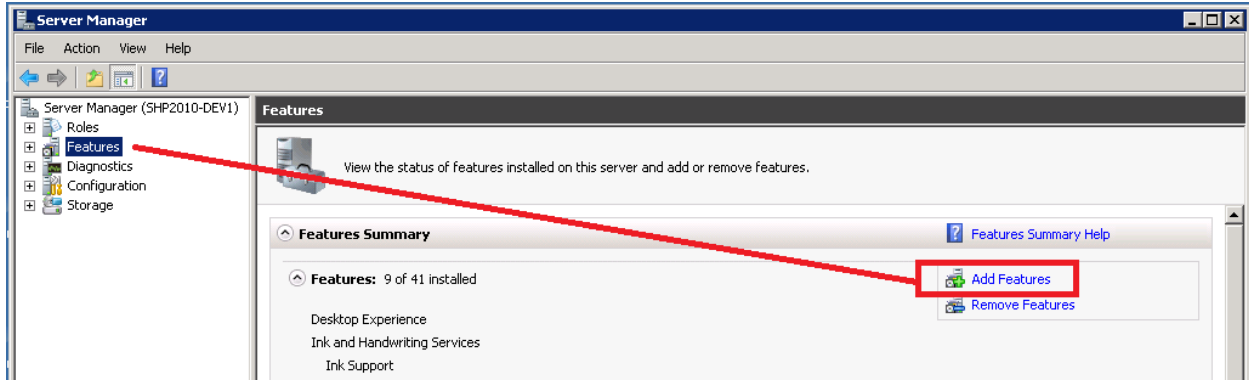
- Click Add Features.



<http://www.qdabra.com>

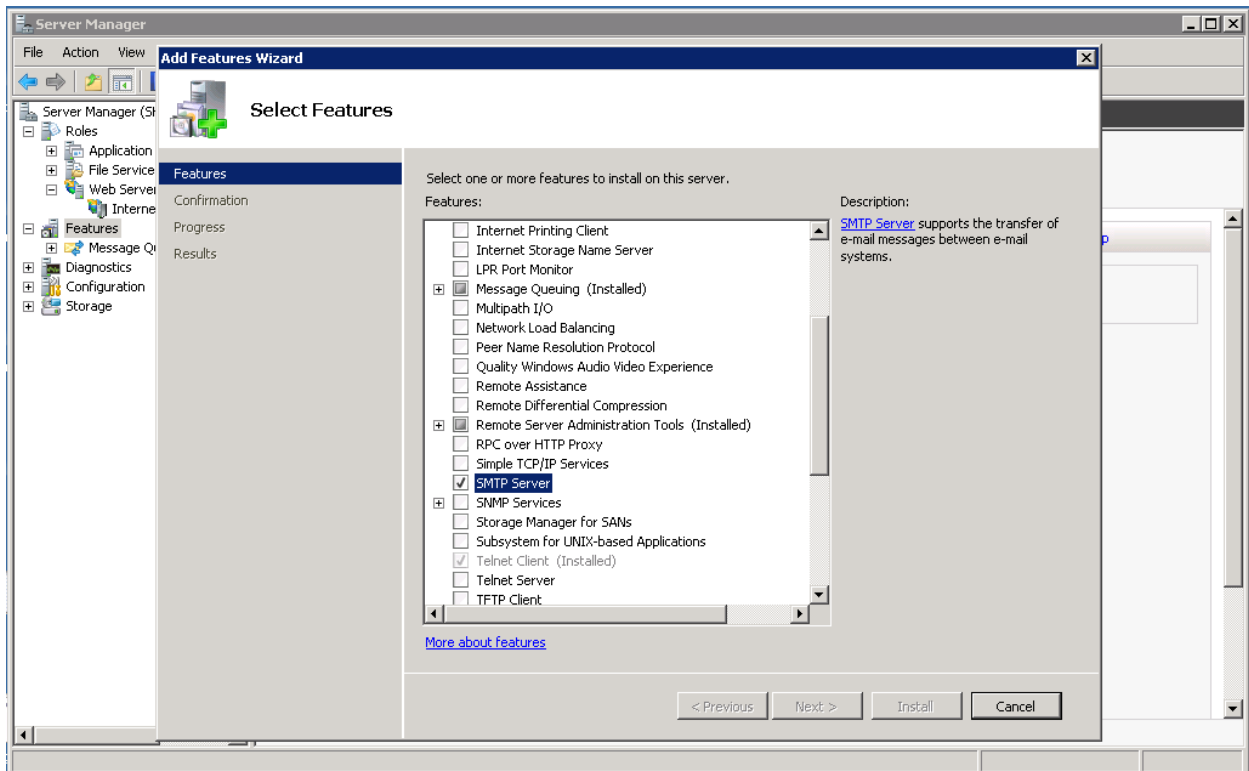
Last updated on 12/17/2017 11:31 PM

Copyright © 2017 Autonomy Systems, LLC. All rights reserved.



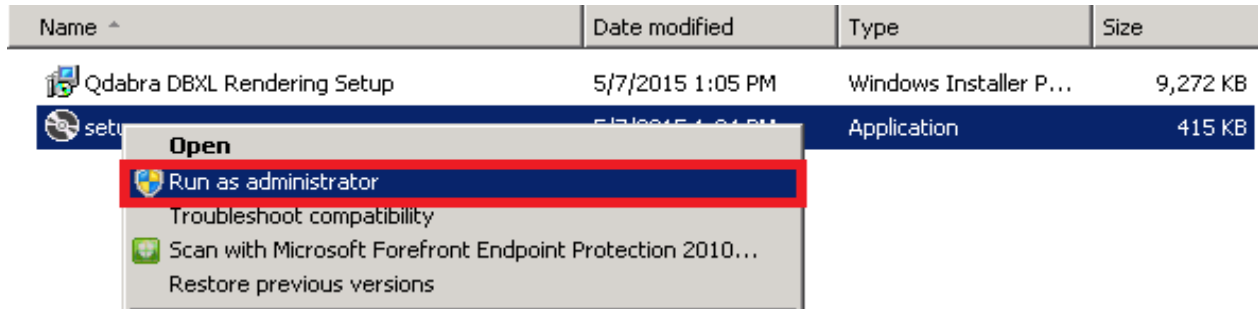
- Enable SMTP Server by ticking the checkbox, and then browse through the Add Features Wizard.

Another option is to use mail.adhost.com.

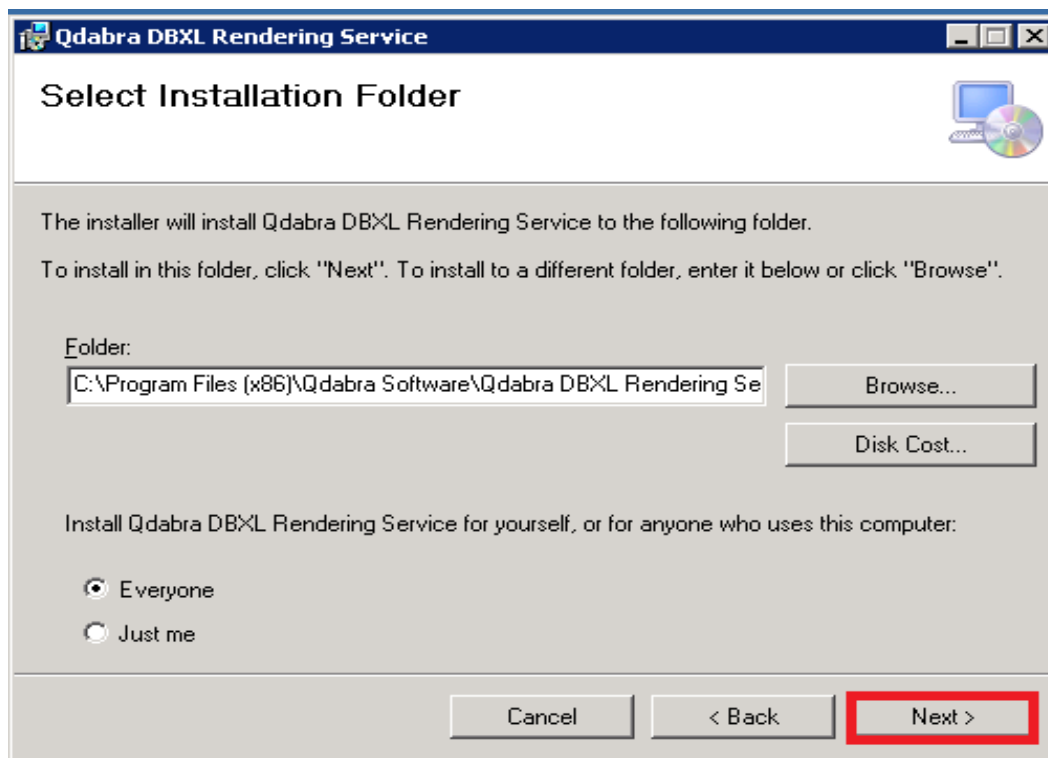


## INSTALL QDABRA DBXL RENDERING SERVICE

- Right click on setup.exe and select Run as Administrator



- Click **Next** in the Welcome screen.
- Select the Installation Folder location (the installer selects the existing Qdabra Software folder location by default: C:\Program Files (x86)\Qdabra Software\Qdabra DBXL Rendering Service\ ). Click **Next**.



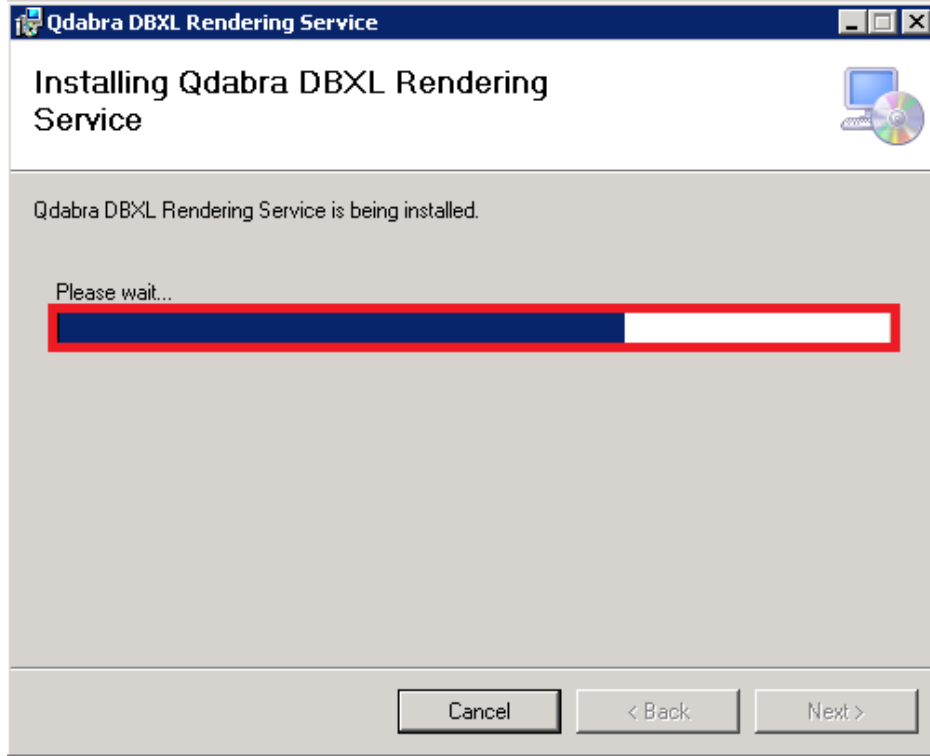
- Click **Next** to confirm the installation.



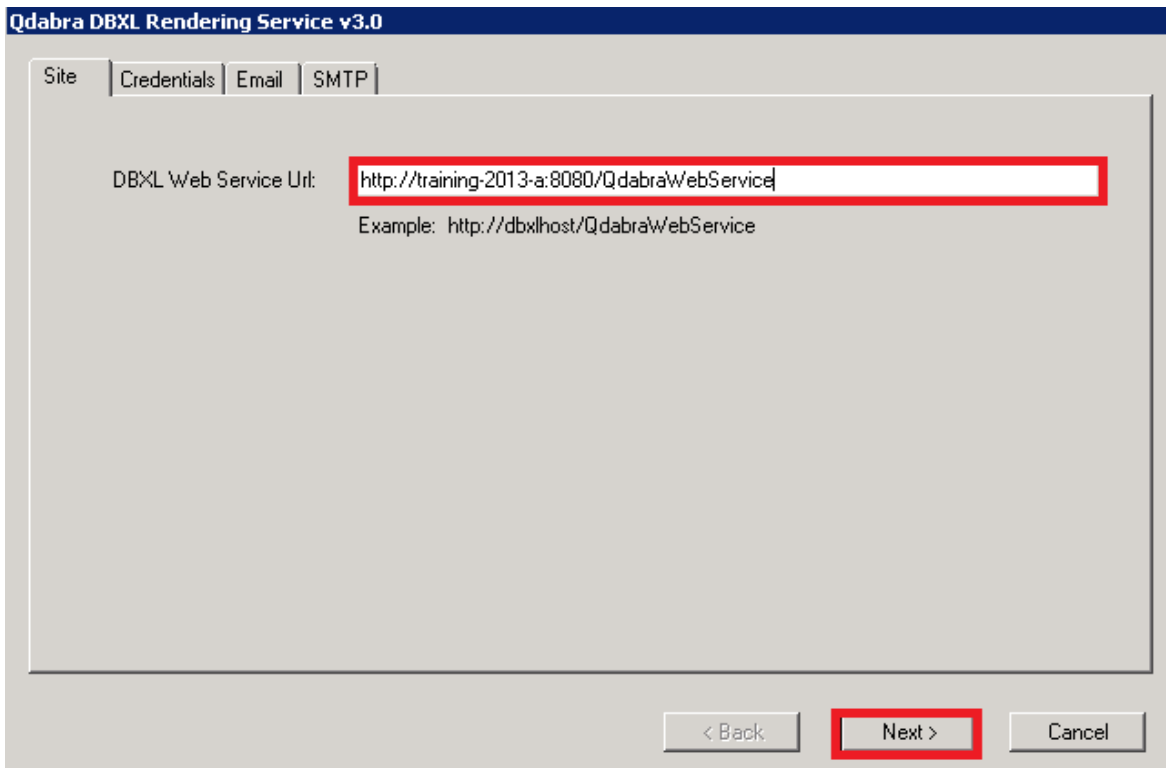
<http://www.qdabra.com>

Last updated on 12/17/2017 11:31 PM

Copyright © 2017 Autonomy Systems, LLC. All rights reserved.



- Enter the DBXL Web Service URL. Click **Next**.



- Select between Predefined and Configurable account credentials.
  - If you select Predefined, you will not need to provide credentials.

Qdabra DBXL Rendering Service v3.0

Site | Credentials | Email | SMTP

The Qdabra™ Rendering Service will run under these account credentials. This account must have DBXL Administrator permissions. You can change this account after installation in the Windows service applet.

Predefined Network Service

- If you select Configurable, you must provide an Account and Password.

Configurable

Account:

Password:

- Click **Next** to proceed to the following tab.
- Configure the Email settings:

Qdabra DBXL Rendering Service v3.0

Site | Credentials | Email | SMTP

Default values for email notifications.

From

Email Address:

Display Name:

Lock

Subject:

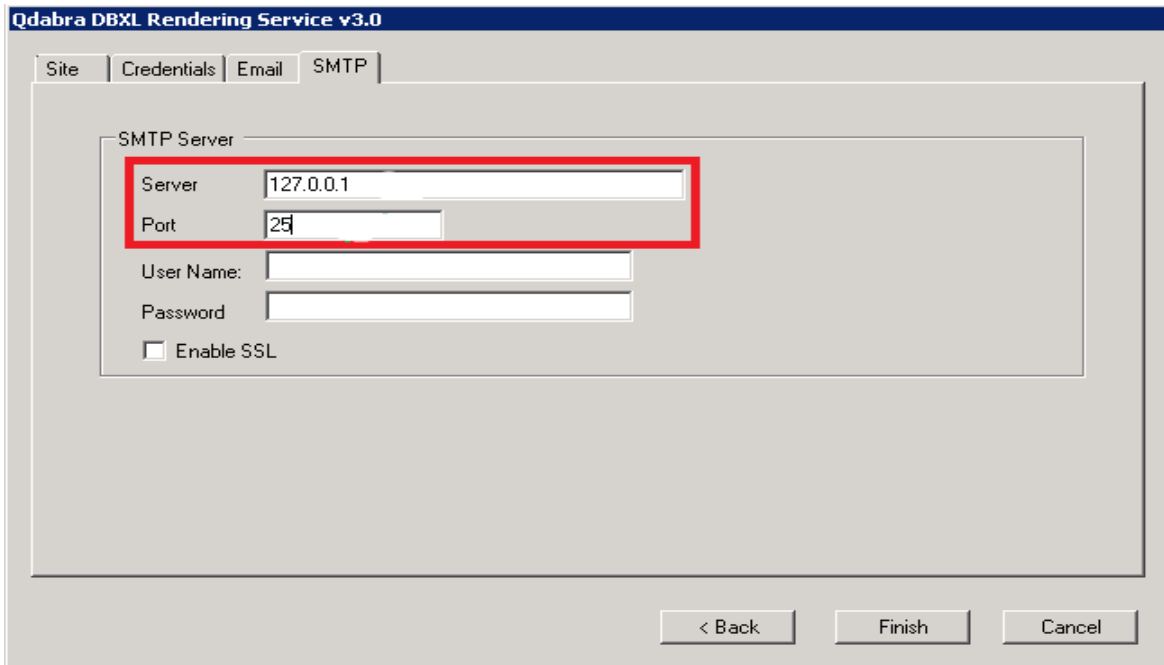
Body

Body is HTML

< Back Next > Cancel



- Click **Next** to proceed to the next tab.
- Configure the SMTP settings:
  - If it is on a local machine then the Server Name is - 127.0.0.1



Qdabra DBXL Rendering Service v3.0

Site | Credentials | Email | SMTP

SMTP Server

Server: 127.0.0.1

Port: 25

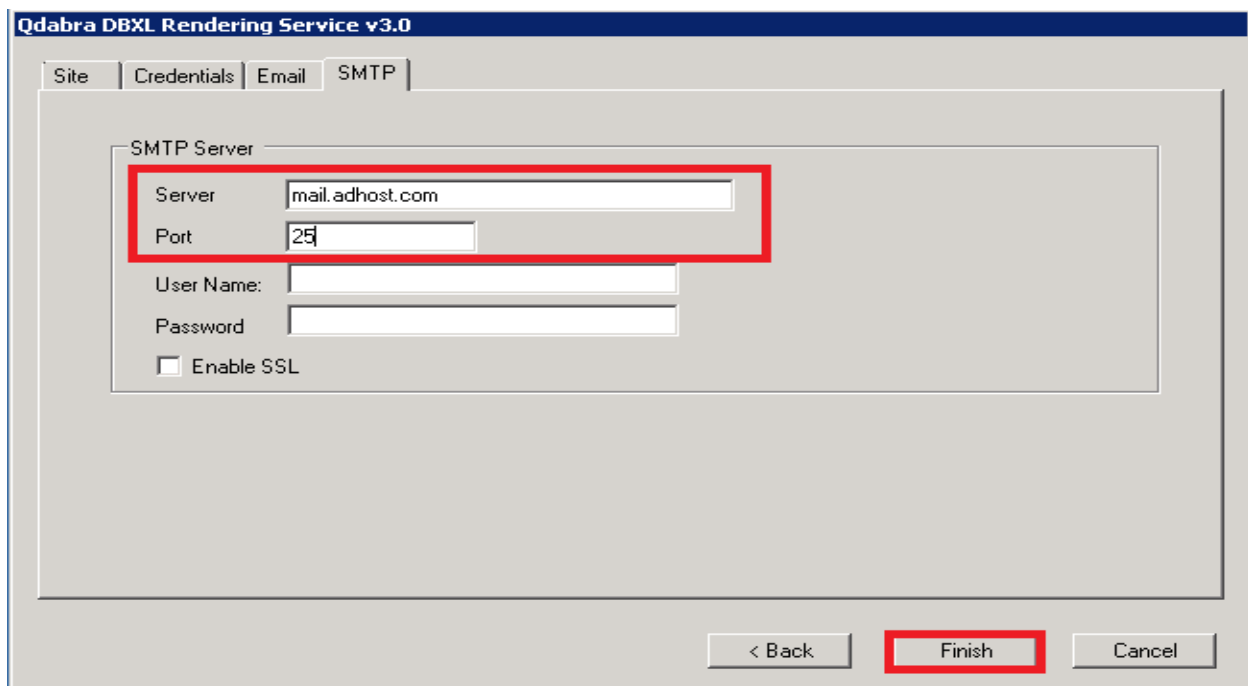
User Name: \_\_\_\_\_

Password: \_\_\_\_\_

Enable SSL

< Back | Finish | Cancel

- Otherwise, Add your own Server name. For example, I used my server name (mail.adhost.com).



Qdabra DBXL Rendering Service v3.0

Site | Credentials | Email | SMTP

SMTP Server

Server: mail.adhost.com

Port: 25

User Name: \_\_\_\_\_

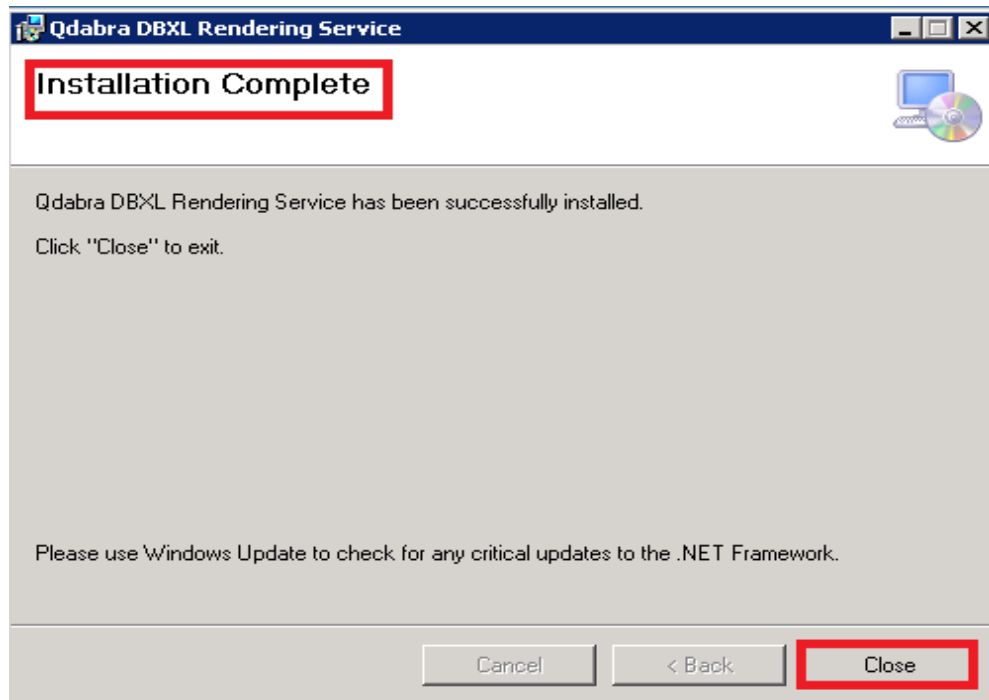
Password: \_\_\_\_\_

Enable SSL

< Back | Finish | Cancel



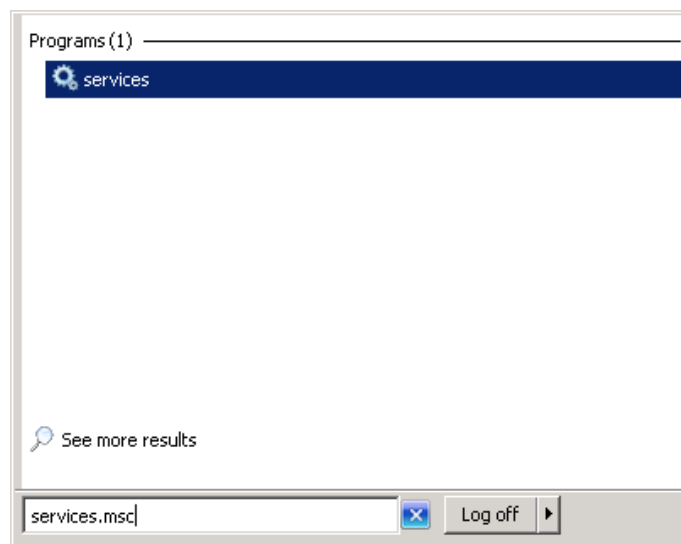
- Click **Finish** to complete the installation process.



- Close the installation wizard.

## START QDABRA DBXL RENDERING SERVICE

- Open the Start Menu, type services.msc in the search box, press Enter:



- If prompted by UAC, then click on Yes.
- Right click on the Qdabra DBXL Rendering Service > Properties.

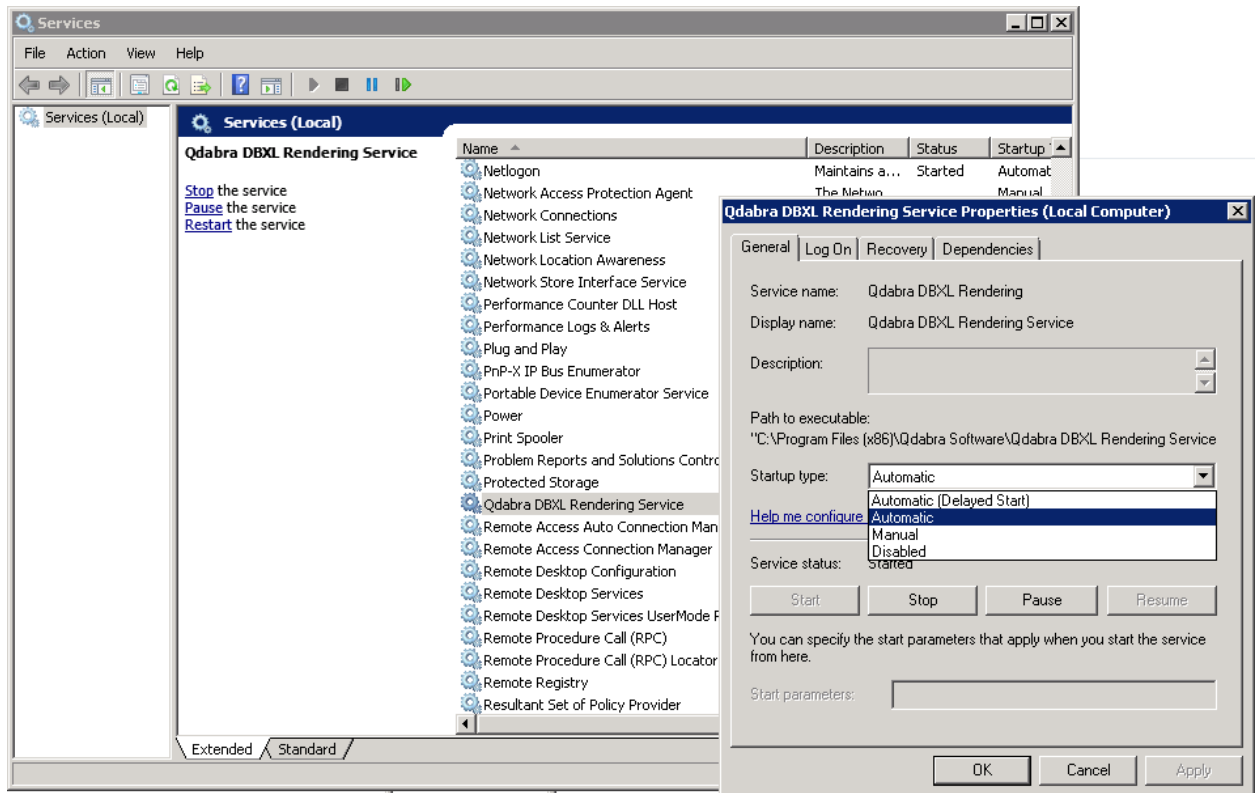


<http://www.qdabra.com>

Last updated on 12/17/2017 11:31 PM

Copyright © 2017 Autonomy Systems, LLC. All rights reserved.

- Next to Startup type, click on the drop down menu and select Automatic and click Apply.



- Click on the Start button.

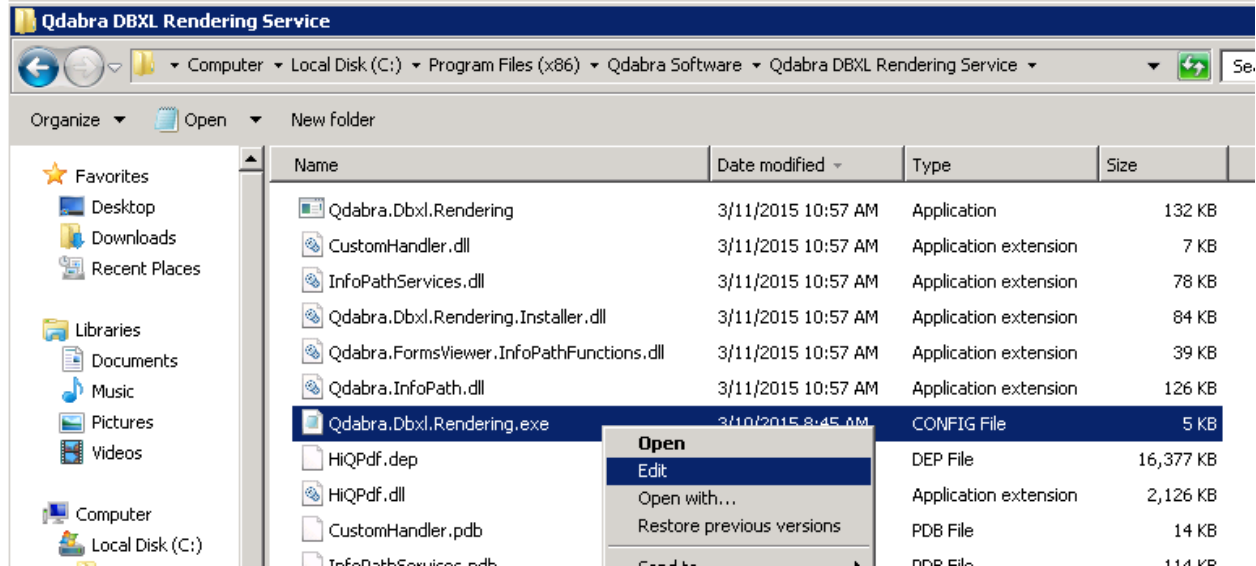
NOTE: If the Start option is grayed out and will not start, then you will need to restart the computer to start it after you set it to Automatic and clicked OK.

## EDITING THE QDABRA.DBXL.RENDERING.EXE.CONFIG

In the event that the DBXL Rendering Service needs to be configured manually, follow the steps below:

- Locate the folder where DBXL Rendering Service is installed.
- Inside the Qdabra DBXL Rendering Service folder, edit the Qdabra.Dbxl.Rendering.exe.config using a text editor such as **Notepad**.





Here's how the Config file will appear in notepad:

```
<appSettings>

  <add key="XSNStoragePath" value="" />

  <add key="DBXL_URL" value="http://shp2010-dev1:8181/QdabraWebService" />

  <add key="ClientSettingsProvider.ServiceUri" value="" />

  <add key="Smtp_Servername" value="127.0.0.1" />

  <add key="Smtp_Port" value="25" />

  <add key="Smtp_UserName" value="" />

  <add key="Smtp_SequenceNumber" value="" />

  <add key="Smtp_Password" value="" />

  <add key="Smtp_EnableSsl" value="false" />

  <add key="Email_Subject" value="Document Rendering" />

  <add key="Email_Body" value="Attached is the rendering of your document" />

  <add key="Email_BodyIsHtml" value="false" />

  <add key="Email_FromAddress" value="NoReply@qdabra.com" />

</appSettings>
```



<http://www.qdabra.com>

Last updated on 12/17/2017 11:31 PM

Copyright © 2017 Autonomy Systems, LLC. All rights reserved.

```
<add key="Email_FromDisplayName" value="" />

<add key="Email_FromLocked" value="false" />

<!-- CustomHandler that will be called after rendering -->

<add key="CustomHandler" value="CustomHandler.CustomRendering, CustomHandler" />

<!-- -->

<!-- Properties sepcific to the CustomHandler implementation -->

<add key="PdfMetadataConnString" value="" />

<add key="PdfOutputFolder" value="" />

<add key="PdfFileNameXPath" value="" />

<!-- -->

</appSettings>
```

Notice that the texts in **red** are the same values specified when Qdabra DBXL Rendering Service was installed.

Editing these values spontaneously updates the settings of the Qdabra DBXL Rendering Service.



## CREATE A PDF MAPPING

In this section, we will use the default QdExpenseReport-Sample form for PDF configuration.

- Click the **QdExpenseReport-Sample** doctype.

Home	Catalog	DocType	Tools	License
Qdabra DBXL				Refresh List
Administration Tool <b>Catalog</b>				New Configuration
Document Type Configuration			Show Descriptions	
Group & Name	Form Version	# Docs	Edit	
[-] Uncategorized forms				
ProjectCode	1.0.0.235	2	Edit	
<b>QdExpenseReport-Sample</b>	1.0.0.4	28	Edit	
QdImageFile	1.0.0.4	20	Edit	
QdImageSubmitter	1.0.0.32	5	Edit	

- Click the **PDF** tab to open up the **PDF Mapping configuration** page.

Home	Catalog	DocType	Tools	License
Qdabra DBXL				
Administration Tool <b>DocType: QdExpenseReport-Sample</b>				
General	Database	Permissions	Documents	<b>PDF</b> XML
Mapping Basic info				
Modify existing Mapping				
Mapping Name			Edit	Delete
Create New Mapping				
				New

- Click **New** button to create a **PDF Mapping** for the current doctype.
- Once the form opens, indicate a mapping name if desired.
- Select a View to be printed in PDF.

Home	Catalog	DocType	Tools	License
Qdabra DBXL				
Administration Tool <b>DocType: QdExpenseReport-Sample</b>				
General	Database	Permissions	Documents	Statistics <b>PDF</b> XML
Mapping Basic info				
Mapping Source DocType:		Type:	View:	Mapping Name (recommended):
QdExpenseReport-Sample		PDF	View 1	PDF_QdExpenseReport-Sample
Rendering Process				
Rendering is initiated when:		What Action take on the rendered PDF:	PDF Naming:	



<http://www.qdabra.com>

Last updated on 12/17/2017 11:31 PM

Copyright © 2017 Autonomy Systems, LLC. All rights reserved.

The fields should be self-explanatory, but in order to create a basic PDF mapping for testing purposes, follow the configuration below:

- Specify when PDF rendering should be triggered.
- Specify how PDF Rendering is saved.
- Enter a default Subject and Body for the email (can use an Expression)
- Specify a sender
  - Static: Uses hardcoded data (i.e notifications@qdabra.com)
  - Dynamic: Uses an xpath (i.e. /my:myFields/my:Email)
- Specify Recipients – Static data or Dynamic
- Click **Save** button.

Mapping Basic info			
Mapping Source DocType:	Type:	View:	Mapping Name (recommended):
QdExpenseReport-Sample2	PDF	View 1	PDF_QdExpenseReport-Sample2
Rendering Process			
Rendering is initiated when:	What Action take on the rendered PDF:	PDF Naming:	
<input checked="" type="checkbox"/> When a new document is submitted <input checked="" type="checkbox"/> When an existing is modified Additional Condition:	<input type="checkbox"/> Save as QdFile and send Email with link <input checked="" type="checkbox"/> Send Email with Attachment	Naming Expression: <input type="text" value="/my:expenseReport/my:FormValues/my:FormName"/>	
		Archival location: <input type="text"/> <input type="checkbox"/> XPath Expression	
Rendering Contents			
Email Subject:	Body:		
<input type="radio"/> Static Text <input checked="" type="radio"/> XPath Expression	<input checked="" type="radio"/> View <input type="radio"/> HTML <input type="radio"/> XPath Expression <input type="radio"/> Plain Text		
<input type="text" value="string(/my:expenseReport/my:FormValues/my:FormName)"/>	View 1		
Attachment:			
XPath of attachment:	Email:	Archive Location (optional):	File Name (for non-file attachment): ?
<a href="#">Add attachment</a>			
Email Address			
	Type:	Email Address: (Xpath for Dynamic):	Display Name (Optional, Xpath for Dynamic):
From Address	static	notifications@qdabra.com	
To Address	dynamic	/my:expenseReport/my:manager/my:manage	
CC Address	static	<a href="#">Add CC Email Address</a>	
BCC Address	static	<a href="#">Add BCC Email Address</a>	

This configuration should be enough to help you get started with rendering a PDF and sending the PDF file via email.

Using an Archival Location saves the PDF file to a local server folder, if specified.

Note: Specifying a Mapping name helps identifying the mappings easier – greatly helps if you are dealing with multiple PDF mappings.

Feel free to try and generate a PDF by submitting a test form.



<http://www.qdabra.com>

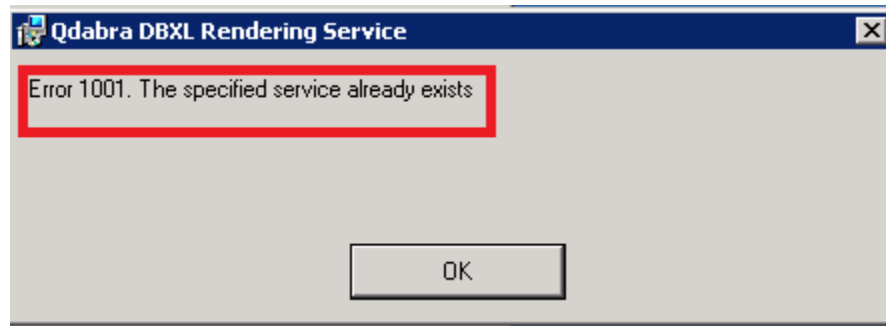
Last updated on 12/17/2017 11:31 PM

Copyright © 2017 Autonomy Systems, LLC. All rights reserved.

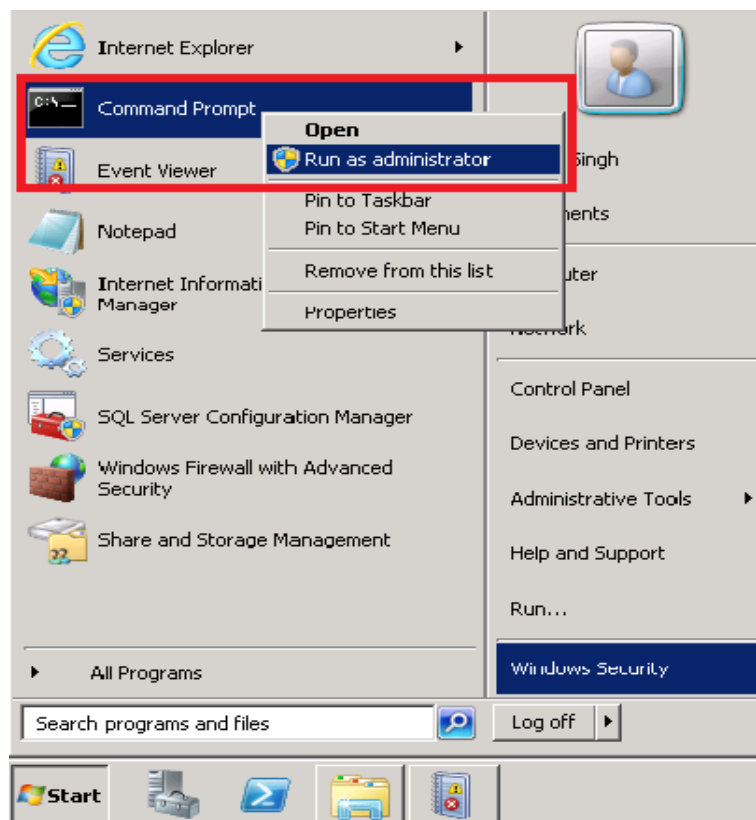
## ADDITIONAL STEPS TO TROUBLESHOOT ERRORS:

### “ERROR 1001” DURING DBXL RENDERING INSTALL:

While installing DBXL Rendering Service if you get the “Error 1001” as shown below, please perform the following additional steps:



- Go to the “START” menu, right-click on the *Command Prompt* and select “Run as administrator”.



- On Command Prompt window, type the following command: **sc delete “Qdabra DBXL Rendering”** and press ENTER.



```

Administrator: Command Prompt
Microsoft Windows [Version 6.1.7601]
Copyright (c) 2009 Microsoft Corporation. All rights reserved.

C:\Windows\system32>cd/
C:\>sc delete "Qdabra DBXL Rendering"

```

- You should see a Success message that verifies that the Service has been deleted successfully.

Service Name	Description	Startup Type	Log On As
Print Spooler	Loads files...	Started	Automatic
Problem Reports and Diagnostics	This servic...		Manual
Protected Storage	Provides pr...		Manual
Qdabra DBXL Rend...			Automatic
Remote Access Aut...	Creates a ...		Manual
Remote Access Co...	Manages di...		Manual

```

Administrator: Command Prompt
Microsoft Windows [Version 6.1.7601]
Copyright (c) 2009 Microsoft Corporation. All rights reserved.

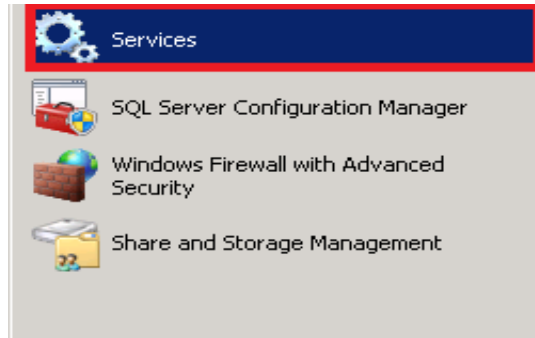
C:\Windows\system32>cd/
C:\>sc delete "Qdabra DBXL Rendering"
SC! DeleteService SUCCESS

C:\>_

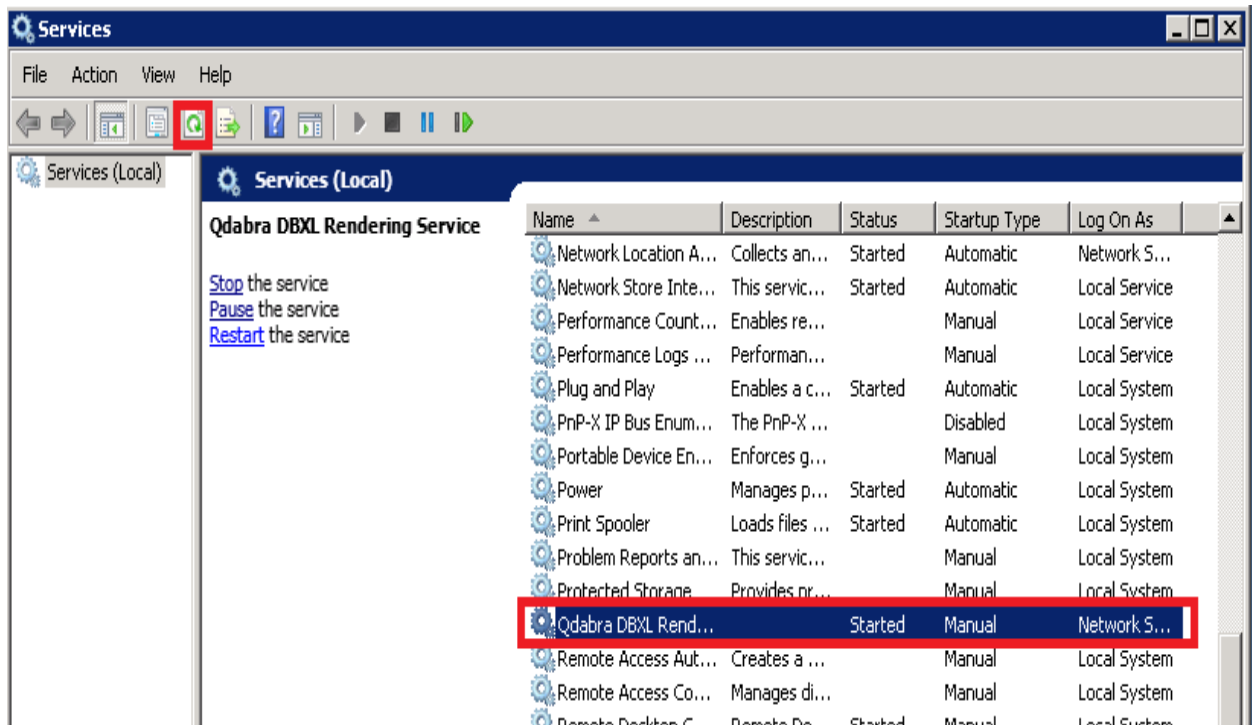
```

- Open "Services" from the **Start** menu and navigate to the "Qdabra DBXL Rendering service".



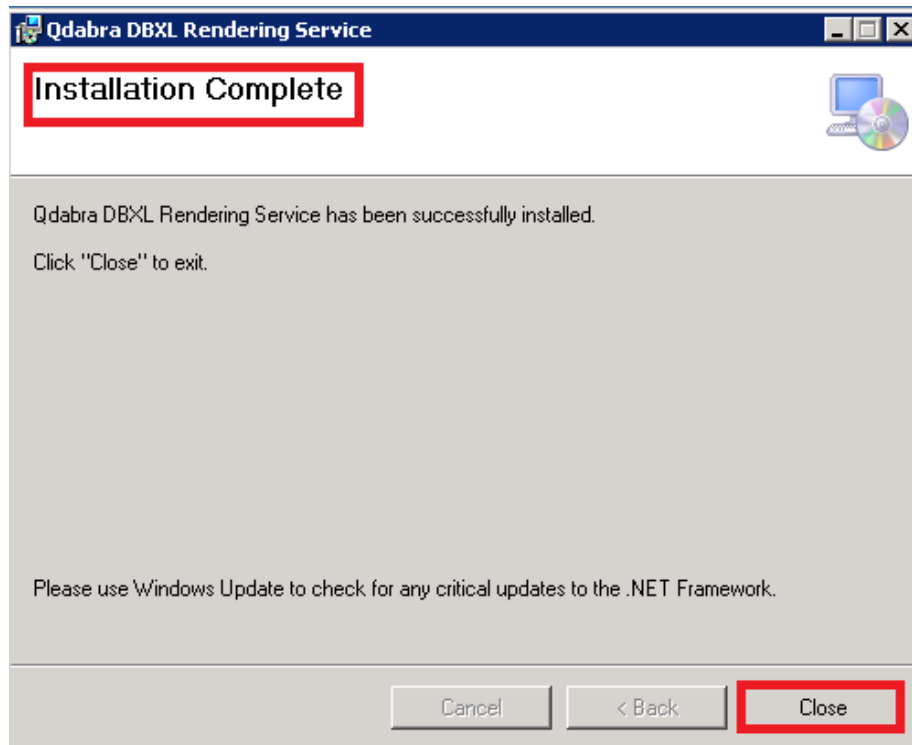


- Click on **Refresh** icon on the top left side of the 'Services' window.



- Follow all the steps to install DBXL Rendering Service as described earlier in the document.
- When the Installation is successful, you will see the following window:





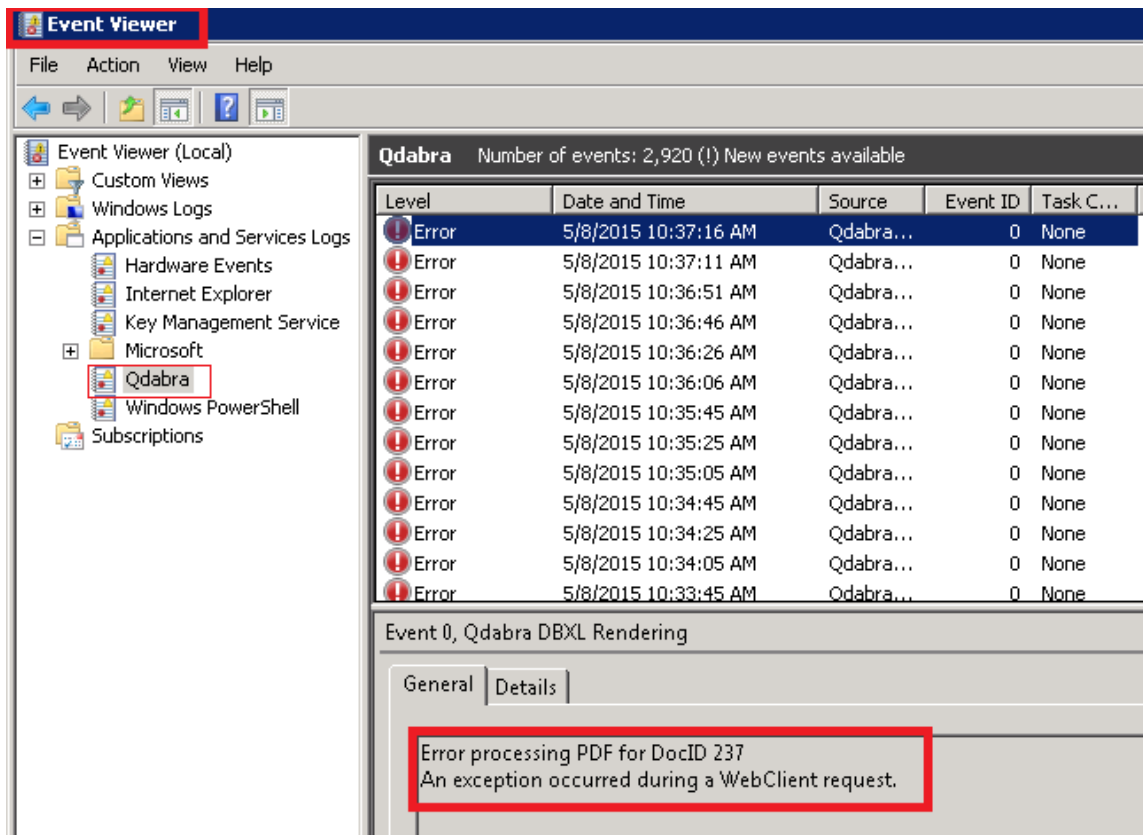
- Click on **Close**.

#### "ERROR PROCESSING PDF FOR DOCID":

After installing DBXL Web Service and Rendering Service, create a PDF Mapping following the steps described in this document.

- Open the Sample Expense Report form, enter the values including email address of the recipients (you can give your Outlook address to verify it) and click on **Submit**.
- To verify that PDF Rendering is working correctly, open the **Event Receiver** on the machine where you installed DBXL Rendering service.
- If you get the error message- "**Error Processing PDF for DocId**", please perform the following additional steps:





The screenshot shows the Windows Event Viewer application. The left pane displays the event log tree with 'Qdabra' selected under 'Applications and Services Logs'. The main pane shows a list of error events from the Qdabra service. The selected event details are as follows:

Level	Date and Time	Source	Event ID	Task C...
Error	5/8/2015 10:37:16 AM	Qdabra...	0	None
Error	5/8/2015 10:37:11 AM	Qdabra...	0	None
Error	5/8/2015 10:36:51 AM	Qdabra...	0	None
Error	5/8/2015 10:36:46 AM	Qdabra...	0	None
Error	5/8/2015 10:36:26 AM	Qdabra...	0	None
Error	5/8/2015 10:36:06 AM	Qdabra...	0	None
Error	5/8/2015 10:35:45 AM	Qdabra...	0	None
Error	5/8/2015 10:35:25 AM	Qdabra...	0	None
Error	5/8/2015 10:35:05 AM	Qdabra...	0	None
Error	5/8/2015 10:34:45 AM	Qdabra...	0	None
Error	5/8/2015 10:34:25 AM	Qdabra...	0	None
Error	5/8/2015 10:34:05 AM	Qdabra...	0	None
Error	5/8/2015 10:33:45 AM	Qdabra...	0	None

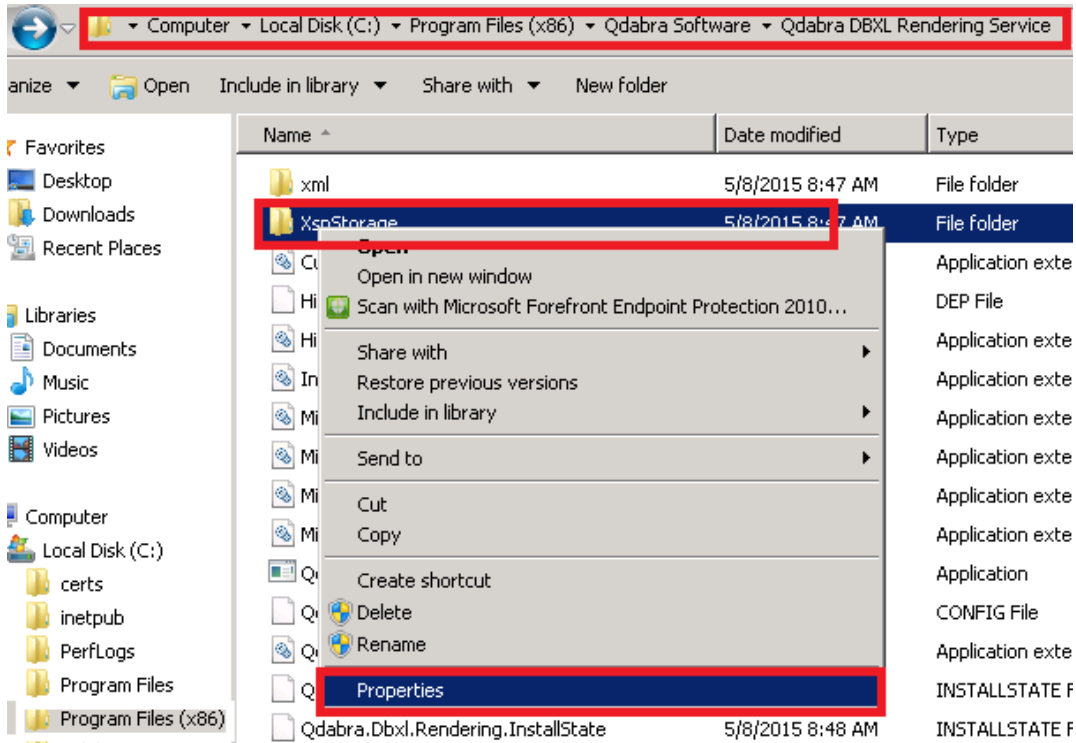
The event details for 'Event 0, Qdabra DBXL Rendering' are shown below:

General | Details

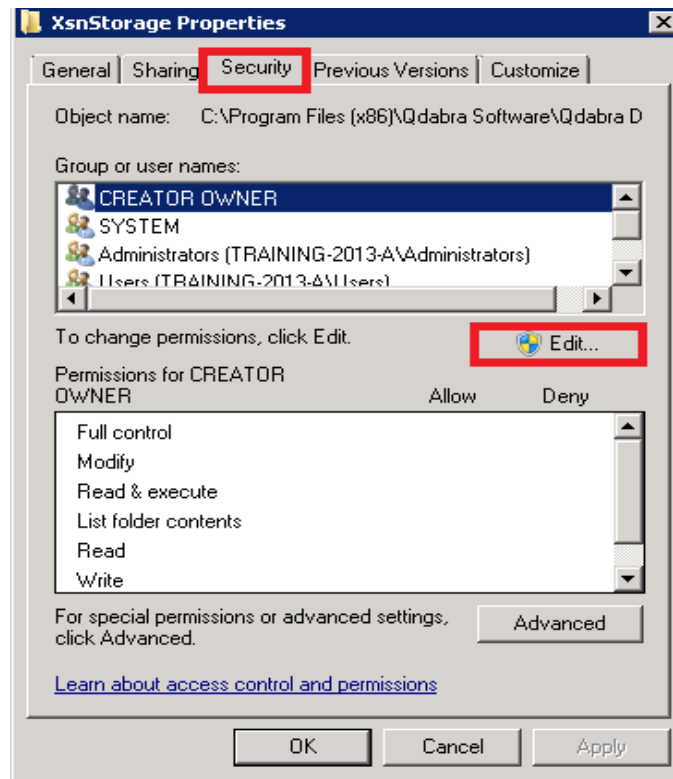
Error processing PDF for DocID 237  
An exception occurred during a WebClient request.

- Navigate to the Parent folder from Windows Explorer, i.e. **C:/Program Files(x86)/Qdabra Software/Qdabra DBXL Rendering Service/**.
- Right-click on the XsnStorage folder and select **Properties**.

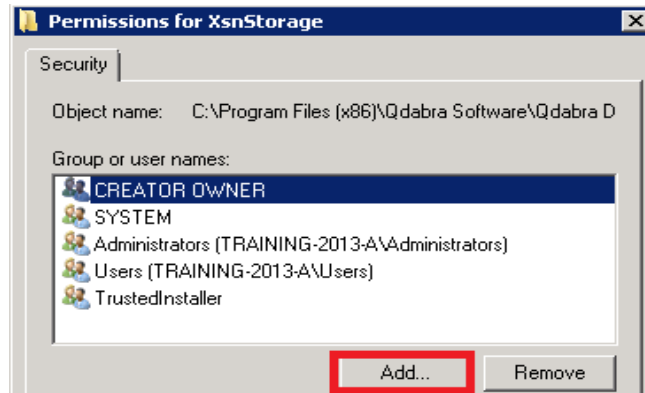




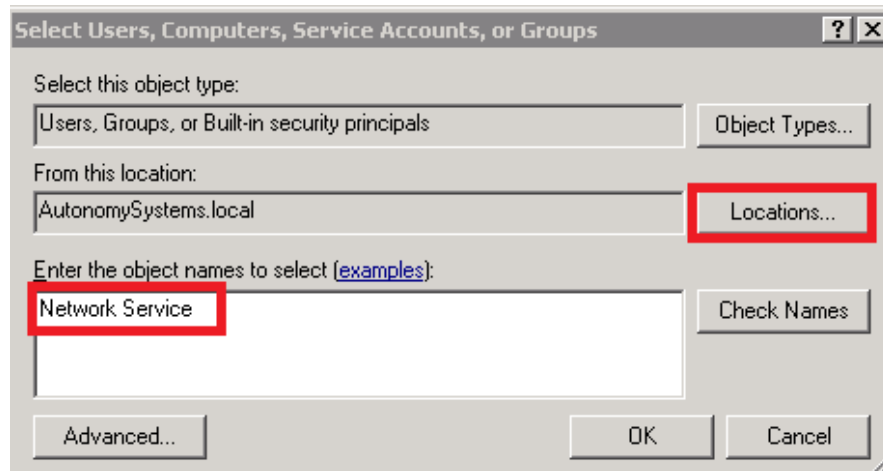
- On the “XsnStorage Properties” window, click on **Security** tab and click **Edit**.



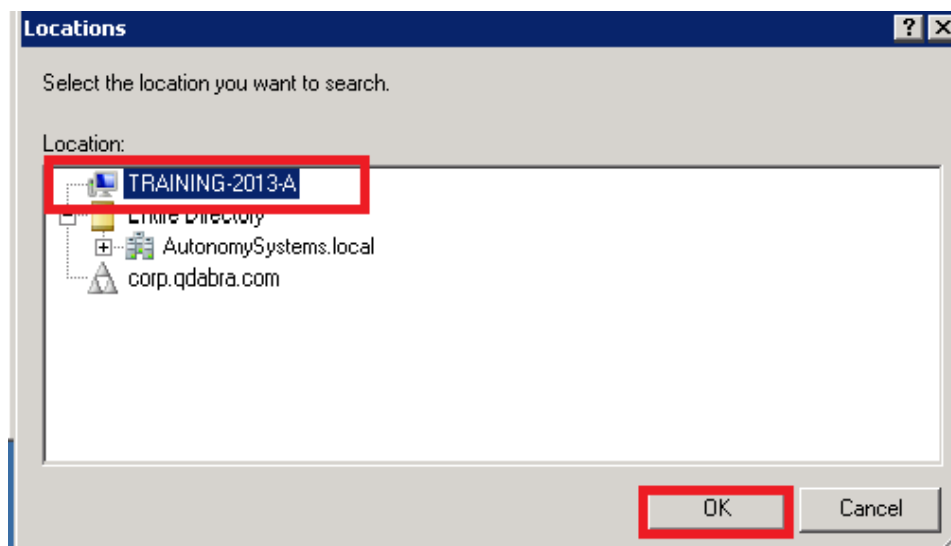
- On the next window click on **“Add”**.



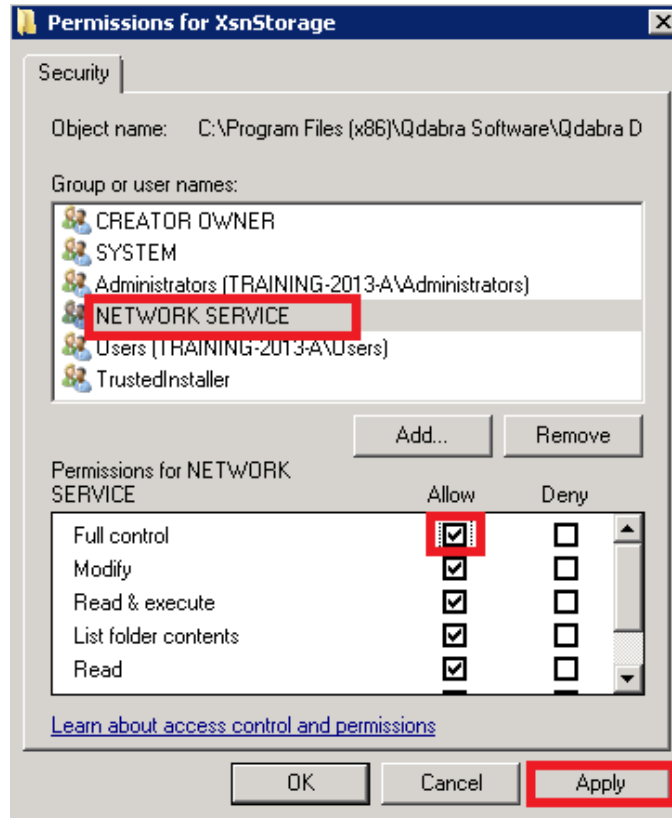
- On the next window, give **“Network Service”** as the object name. Click on **Locations**.



- Change the location to your local machine. Click **OK**.



- Select NETWORK SERVICE and check the Full Control box. Click **Apply**.



- Click **OK** to close all the windows.
- Now, submit a document from the DAT by giving the emails of the recipients (give your email address to verify).



### EXPENSE REPORT

Report Date:  Expense Code:  Start Date:  End Date:   
 Business Purpose:

---

**Employee Information**

Name:  Title:   
 Department:  ID Number:   
 E-mail Address:

**Manager Information**

Name:  E-mail Address:

**Itemized Expenses**

Date	Description	Category	Cost
5/8/2015	Chocolates	Gifts	80.00
5/8/2015	Coffee	Morale	20.00
5/8/2015	Headset	Office supplies	120.00
<b>Subtotal</b>			<b>220.00</b>
<b>Less cash advance</b>			<b>0.00</b>
<b>Total expenses</b>			<b>220.00</b>

**Item Details**

- You should see an email with the PDF of the form you just submitted.

Deleted Items

---

Prachi.Singh@Qdabra.com

**Inbox 1**

- Qdabra@mcafee
- Support
- Drafts [2]
- Sent Items
- Deleted Items
- Hightail Outbox
- Junk E-Mail
- MY SERVICES
- Outbox
- RSS Feeds
- Search Folders

**NoReply@qdabra...** 11:22 AM

Hello World!

Qdabra Rocks! <end>

---

**NoReply@qdabra...** 11:16 AM

Hello World!

Qdabra Rocks! <end>

---

**NoReply@qdabra...** 11:16 AM

Hello World!

Qdabra Rocks! <end>

---

**noreply@infopath...** 11:09 AM

Re: Convert \*.xml from ...

Re: Convert \*.xml from a

---

**Formsboard Notif...** 10:53 AM

Tasks: Kathleen Harford...

Hello,

---

**Formsboard Notif...** 10:53 AM

Customer Support: Kat...

Hello,

---

**Kathleen Harford** 10:31 AM

Re: Follow-up: Support...

Hi Prachi, It was

---

**noreply@infopath...** 10:17 AM

Re: Submit via Web Ser...

Message **2015-05-08.pdf (161 KB)**

### EXPENSE REPORT

Report Date:  Expense Code:  Start Date:  End Date:   
 Business Purpose:

**Employee Information**

Name:  Title:   
 Department:  ID Number:   
 E-mail Address:

**Manager Information**

Name:  E-mail Address:

**Itemized Expenses**

Date	Description	Category	Cost
5/8/2015	Chocolates	Gifts	80.00
5/8/2015	Coffee	Morale	20.00
5/8/2015	Headset	Office supplies	120.00
<b>Subtotal</b>			<b>220.00</b>
<b>Less cash advance</b>			<b>0.00</b>
<b>Total expenses</b>			<b>220.00</b>

**Item Details**



## ENABLING THE REF ID

The Ref ID works as an incrementing index for XML documents:

**Query Documents**

To limit the number of documents shown, enter a starting Doc. ID and the number of documents to show, and then click query. You can then jump forward or backward by the number of shown documents, or click Query All to show all documents. To search for a Document with a specific Ref. ID, type the ID into the field, and then click Query.

Starting Doc. ID:  Range:  Ref. ID:

**Actions on Documents**

Select documents for Reshred and Delete.  
If reshredding more than 100 documents, please use the DBXL Migration Tool.

**Documents**

							Total Documents: 4	
<input type="checkbox"/>	Doc. ID	Ref. ID	Version #	Name	Author	Description	Open	History
<input type="checkbox"/>	28422	1	1				Open	History
<input type="checkbox"/>	28423	2	1				Open	History
<input type="checkbox"/>	28424	3	1				Open	History
<input type="checkbox"/>	28425	4	1				Open	History

This feature has been intentionally disabled for DBXL v3.1 or higher has been disabled but can be re-enabled at the General tab by setting either of the conditions below:

- Setting the **Format for Ref.ID** to the value {0}
- Setting the **Xpath to Inject Ref.ID into** to an *xpath* in the form

Here's an example of how to set the **Format for Ref.ID** to the value {0}

General
Database
Permissions
Documents
Statistics
Email
XML
Import
Query Builder

**Document Type Details**

Name: RefIdTest Description:

Solution Group:

**InfoPath Form Template**

XSN File:   Form Template Properties:

Form Version: 1.0.0.3 URL: <https://dbxl365.formsboard.com/QdabraWebService/Forms/ID/23050/template.xsn>

Last Uploaded: 4/28/2017 7:46:51  Form template is signed

Last Uploaded By: DBXL3-365\dbxladmin  URN-based solution

Enable Document History

**Ref. ID**

Format for Ref. ID:	Base Reference #:	XPath to Inject Ref. ID Into (Leave Blank to Disable):
<input style="border: 1px solid red;" type="text" value="{0}"/>	<input style="border: 1px solid red;" type="text" value="0"/>	<input style="border: 1px solid red;" type="text"/>

Base Reference on the other hand is the starting point of the index. Setting this to 0 means your Ref ID index will begin with number "1".



<http://www.qdabra.com>

Last updated on 12/17/2017 11:31 PM

Copyright © 2017 Autonomy Systems, LLC. All rights reserved.

## SUPPORT

If you have encountered issues while installing DBXL, please contact Qdabra at [support@qdabra.com](mailto:support@qdabra.com).

If DBXL has been successfully installed try out the Getting Started document, which is linked from DBXL's default.htm page.

For any other questions not covered in this document, please contact Qdabra Software.



<http://www.qdabra.com>

Last updated on 12/17/2017 11:31 PM

Copyright © 2017 Autonomy Systems, LLC. All rights reserved.