



DBXL v3.1 Release Notes

If you are having an issue with DBXL, this is the first place to look. Ctrl-F and search for a specific keyword related to the issue you have encountered.

This document contains a list of known issues, troubleshooting hints and workarounds for a variety of issues related to Qdabra's DBXL v3.1. To reduce the size of this document, any release notes related to obsolete scenarios from previous versions of DBXL have been removed.

CONTENTS

Event Receiver Scenario – DBXL installed on separate server.....	7
.NET 4.5.1 is required	7
Credential prompt querying QueryDBWithUserKey.....	7
Rendering Service Does Not Start Automatically	8
XML Rendering requires Manual Update to Qdabra.Dbxl.Rendering.Exe.Config	8
POWERSHELL EXECUTION.....	8
THE OPERATION HAS TIMED OUT	9
IS THE WSP SOLUTION DEPLOYED?	9
UNINSTALLING OR UPDATING THE WSP	9
Event Receiver submit triggered by workflow.....	10
OBJECT REFERENCE NOT SET TO AN INSTANCE OF AN OBJECT.....	10
SECURE STORE SERVICE REQUIRES SHAREPOINT STANDARD OR ENTERPRISE	10
DELETING DATA	10
DBXL TOKENS.....	10
Extending SIZE LIMIT.....	11
Integrated Scenario	12



Installation	12
Page Not Found Error after installing DBXL.....	12
Error message: Client found response content type of 'text/html; charset=utf-8', but expected 'text/xml'	12
DBXL Installation Produces an HTTP Error 405	13
DBXL Installation Produces an HTTP Error 404	13
DBXL will assume SSL port number when installing on a site with https	13
DBXL installer encounters 503 error.....	14
IIS site configured to run as 32 bit may not work with DBXL 64 bit	14
Virtual directory not created during installation	14
Site dropdown defaults to hTTPS	14
REINSTALLATION OF DBXL WILL NOT WORK IF APP POOL IS CHANGED TO INTEGRATED PIPELINE MODE.....	15
Disable loopback check to complete installation	15
DBXL inherits modules from parent sites	16
error when adding a content type mapping to a signed form with code.....	17
DBXL Permissions when sandboxing forms in SharePoint 2010.....	18
If left idle, submit button in browser form fails.....	18
SharePoint 2010 and trusted root certificates	19
Installation fails due to SQL connection refused	19
Moving the databases used by DBXL.....	19
Upgrading and migration.....	21
UPgrading	21
Upgrading overwrites stored procedures on QdabraUtility	21
Office 2013 and Full trust forms	21
SharePoint mappings after upgrading DBXL.....	21
Migration	22
Importing documents with their RefIDs intact	22



Migration tool could fail to import large local folders.....	22
General notes	23
installation	23
DBXL can only be installed on machines that are part of a domain	23
Issues with applications that use ports 80 or 443	23
How to activate the Qdabra DBXL feature at a site collection level.....	23
SQL Databases	24
Database names cannot contain spaces.....	24
SQL Full text search	24
SQL setup produces a red flag on environment check	24
SQL connection error concerning the Shared Memory Provider	24
SQL default database not set.....	24
Best Practice for Database Redundancy with DBXL	24
“Cannot generate SSPI context”	25
Changing the DBXL database connection string after installation	25
Permissions.....	26
Using non-default values for permissions prevents DAT installation.....	26
Users must have Read permissions for the Document Type.....	26
Changing document level permissions requires reshredding.....	26
Add permissions to the QdabraWebService folder	26
DBXL Administration Web Page (DAT).....	27
Do not include special characters in Document Type name	27
Cannot remove document types that contain resources	27
Renaming a document type.....	27
Indexing features on the General tab in DAT	27
Database Mapping.....	28



GetDocumentSummaryByType is limited by SQL to 2100 items.....	28
Shredding without a key returns error in database mapping.....	28
Error message: Cannot open database requested by the login. The login failed.....	28
Cannot map to a database column that has Identity set to 'Yes'	28
DBXL does not support 'yes' and 'no' as Boolean values.....	28
Cannot delete documents when there is a mapping error	29
Reshred all fails due to timeout in DAT	29
QuerySharePoint	30
Querying for a Specific view	30
Providing other arguments should override the view values.....	30
QuerySharePoint fails on SharePoint 2003.....	30
Using dynamic queries in repeating tables.....	30
Use CDATA when working with special characters	31
QueryBuilder.....	32
Query Builder uses the local user's credentials to connect to SQL	32
Qdabra's Query Builder tool uses the 2007 OM.....	32
Uninstalling Qdabra's Query Builder InfoPath form tool.....	32
QueryBuilder does not show user-friendly column names	32
Invalid XML	33
Encoded spaces in the URL produce an error.....	33
QueryDB	34
User encounters "Database not registered for use" error when calling QueryDB.....	34
QueryDB uses the credentials of the web service instead of those of the querying user	34
Using QueryDB with a dynamic SQL table	34
How can users query non-DBO tables using QueryDB?	34
Invalid XML	34



Querying the QdabraDBXL database	35
Miscellaneous	36
Modify the duration of DBXL Locks	36
Active Directory web service query fails on Windows XP.....	36
DBXL returns licensing/domain error when SQL is unavailAble	36
InfoPath errors on older Office service packs.....	36
Notifications email is delivered into the Junk e-mail folder	37
Digitally-signing documents for use in DBXL	37
Uploading large attachments in DBXL	37
Documents open in Read-only mode in Windows Vista	37
Preserve more error events in Event Viewer.....	38
Removing clutter from the Qdabra Event Log.....	38
SQL Clustering.....	39
Document submission fails during a failover.....	39
Reshred All during a Failover	39
Standalone Scenario	40
Installation	40
Stop the service before uninstalling	40
Standalone Edition Installation errors due to Service	40
Installation error when NEtwork Service account lacks permissions	40
Standalone Edition Configuration file.....	41
Standalone DBXL Service already exists when reinstalling.....	41
Determine the DBXL port Number	41
Dashboard	41
DBXL Standalone version requires service restart for configuration changes.....	41
Temporary files and disk space when using the dashboard.....	41



Automatic sync from the dashboard only supported on Windows 742

Using the Dashboard to sync large XML documents42

Upload fails when dashboard switches to another server42

Deleting from SharePoint does not delete on Standalone copy42

No warning in the Dashboard when the license limit is reached42

Support43



EVENT RECEIVER SCENARIO – DBXL INSTALLED ON SEPARATE SERVER

Installing DBXL on a separate server has been the recommended deployment model. DBXL v2.8 and later support this scenario. This is the best practice for SharePoint 2013 On Premise as well as Office 365 and Windows Azure deployments. Installing on a separate server is a best practice for security and performance reasons.

.NET 4.5.1 IS REQUIRED

If you see the following error while installing:

```
"Error bootstrapping system doctypes. System.InvalidOperationException: Client found response content type of 'text/html; charset=utf-8', but expected 'text/xml'."
```

Please make sure you have .NET Framework 4.5.1 installed and try again.

CREDENTIAL PROMPT QUERYING QUERYDBWITHUSERKEY

The InfoPath Filler client will try to authenticate when connecting to DBXL Web services. Hitting escape will dismiss the credential prompt and continue the connection.

To remove credential prompting for InfoPath Filler when querying anonymous DBXL methods, add the following "location" section to the parent Web.config to disable them.

```
<?xml version="1.0" encoding="utf-8"?>
<configuration>
  <location path="QdabraWebService">
    <system.webServer>
      <security>
        <requestFiltering>
          <verbs allowUnlisted="true">
            <add verb="OPTIONS" allowed="false" />
          </verbs>
        </requestFiltering>
      </security>
    </system.webServer>
  </location>
```



<http://www.qdabra.com>

Last updated on 7/22/2016 12:27 AM

Copyright © 2006-2016 Autonomy Systems, LLC. All rights reserved.

```
</configuration>
```

Note: this also occurs when querying DBXLDocumentWithUserKeyService.

RENDERING SERVICE DOES NOT START AUTOMATICALLY

After DBXL installation completes, the Qdabra DBXL Rendering Service will not start automatically.

You can either start it manually from services or reboot the machine.

XML RENDERING REQUIRES MANUAL UPDATE TO QDABRA.DBXL.RENDERING.EXE.CONFIG

XML Rendering is a feature added in DBXL v3.0. This feature lets dashboards pre-populate an XML form and send it to a recipient. This feature is very useful when dispatching jobs to field workers.

Unlike the PDF rendering which uses the QdRender XML doctype for updates, RenderXml does not have an equivalent doctype. To enable XML Rendering, a SQL connection string to the QdabraUtility must be added in the Qdabra.DBXL.Rendering.Exe.Config file. This connection string allows XML Rendering to update the RenderXml table after processing.

Locate the Qdabra.Dbxl.Rendering.exe.config file and manually update the connection string. For example:

```
<connectionStrings>
    <clear />
    <add name="DBXLUtility" providerName="System.Data.SqlClient" connectionString="Data
    Source=SQLSERVER;Initial Catalog=QdabraUtility;Integrated Security=TRUE" />
</connectionStrings>
```

To use XML Rendering, a dashboard or third-party application (such as Great Plains) must write records to the RenderXml table.

We hope to remove this manual step in a future release.

POWERSHELL EXECUTION

When executing PowerShell commands, you might encounter the following errors.

1. "Admin SVC must be running in order to create deployment timer job."

To solve this, go to the Services section in Control Panel / System and Security / Administrative Tools and find the service called SharePoint Administration. Make sure this service has been started.

2. "A deployment of retraction is already under way for the solution "Qdabra.DBXL.SharePoint.wsp", and only one deployment or retraction at a time is supported".

To solve this, from the command line, execute the following:



<http://www.qdabra.com>

Last updated on 7/22/2016 12:27 AM

Copyright © 2006-2016 Autonomy Systems, LLC. All rights reserved.


```
C:\Program Files\Common Files\Microsoft Shared\Web Server Extensions\14\BIN>stsadm -o execadmsvcjobs
```

If you see the following error: “The administration service is running so all administration jobs will be run in the timer service”, go to the Services section in Control Panel / System and Security / Administrative Tools and find the service called SharePoint Administration. Stop the service and then re-execute

```
C:\Program Files\Common Files\Microsoft Shared\Web Server Extensions\14\BIN>stsadm -o execadmsvcjobs
```

THE OPERATION HAS TIMED OUT

We have seen the following error (sent via email by the Event Receiver) when the hard drive is low on disk space:

```
Web url: http://q-dev64-01
Library: ExpenseReport20130819
User: Ernesto Machado (Test) (i:0#.w|autonomysystems\ernestom)
Item ID: 8
Item Url: ExpenseReport20130819/8.xml
Exception:
The operation has timed out
```

To resolve, ensure the server where SharePoint is installed does not have disk space issues.

IS THE WSP SOLUTION DEPLOYED?

If you need to check whether the WSP has been already deployed, execute the following command in the PowerShell:

```
get-spsolution -Identity Qdabra.Dbxl.SharePoint.wsp
```

To get more details, execute:

```
get-spsolution -Identity Qdabra.Dbxl.SharePoint.wsp | SELECT *
```

UNINSTALLING OR UPDATING THE WSP

To remove the WSP, please execute:

```
Uninstall-SPSolution Qdabra.Dbxl.SharePoint.wsp
```

Once this has finished, also execute:

```
Remove-SPSolution Qdabra.Dbxl.SharePoint.wsp
```

If you'd like to update the WSP, execute the two commands above, and then redeploy the WSP per the instructions at the start of this document. Qdabra does not recommend using Upgrade-SPSolution, since it has some limitations. For details, please see: <http://msdn.microsoft.com/en-us/library/aa543659.aspx>



EVENT RECEIVER SUBMIT TRIGGERED BY WORKFLOW

In DBXL v2.8, workflows may unexpectedly trigger an Event Receiver submit into DBXL. To prevent this, please upgrade to DBXL v3.0; a new setting in the DBXL Settings page allows users to control whether these workflow edits (not XML changes) should trigger a submit.

OBJECT REFERENCE NOT SET TO AN INSTANCE OF AN OBJECT

When configuring the Event Receiver, you may see a message that says: “Object reference not set to an instance of an object.” This error typically refers to one of the following errors in the DBXL Url:

- Incorrect server name, e.g. `http://<invalid>/qdabrawebservice/`
- Incorrect service name, e.g. `http://<correctservername>/<invalidservicename>/`

In SharePoint 2010, the above might also yield the message: “InvalidOperationException” and in SharePoint 2013 “NotSupportedException”.

SECURE STORE SERVICE REQUIRES SHAREPOINT STANDARD OR ENTERPRISE

In the DBXL Settings page, you might receive the following message:

Could not load file or assembly 'Microsoft.Office.SecureStoreService, Version=14.0.0.0, Culture=neutral, PublicKeyToken=71e9bce111e9429c' or one of its dependencies. The system cannot find the file specified.

The SecureStoreService requires SharePoint Standard or Enterprise. This error might mean you are using SharePoint Foundation.

DELETING DATA

If you delete an xml document from the Documents tab in the DBXL Admin Tool, that document will NOT be deleted from the SharePoint Form Library.

However, if you delete the xml document from the SharePoint form library, the data will be deleted from DBXL and consequently from the SQL database (if a database mapping has been defined).

DBXL TOKENS

When no xpaths are defined for the DBXL tokens in the Settings page, the following will be used by default:

- Name is blank
- Author is AUTONOMYSYSTEMS\ernestom
- Description is 6ad628ec-19a2-4e27-a0bf-dc15d4d3b325: 1#;ExpenseReport_EventReceiver_20130821/1.xml



EXTENDING SIZE LIMIT

The event receiver may fail to synchronize XML files larger than the default 4096kb. To extend the size limit for your documents, open the config. file using Notepad (Run as Admin). Search for `maxRequestLength` and change the default value from 4096 to the extended size (eg. 12288).

It will look like this:

```
< system.web >
```

```
< httpRuntime maxRequestLength = "4096" />
```

```
</system.web>
```



INTEGRATED SCENARIO

Integrated installs are no longer supported. Please install DBXL v3.1 on a server separate from SharePoint.

If you are running an earlier version of DBXL (before v2.8) and it is deployed on the same server as SharePoint (i.e. the Integrated Scenario), please refer to DBXL v3.0 Release Notes on InfoPathDev.com under Download and DBXL.

The below release notes are included because they may still be relevant when installing DBXL on a separate server.

INSTALLATION

PAGE NOT FOUND ERROR AFTER INSTALLING DBXL

After installing DBXL, you may see a “Page Not Found” error when accessing the asmx pages. Possible reasons for this are:

1. DBXL was installed on a port other than 80. To fix this, make sure that you have unblocked that port from the network’s firewall.
2. The website is configured to use multiple host names and IP addresses. The easiest workaround is to access your site settings (via the IIS management console) and temporarily remove all hostnames/IP addresses that will not work. Make sure to leave only the hostname that the currently logged-in user can access. Uninstall DBXL and reinstall it. After DBXL installs successfully, you can re-add the additional hostnames and/or IP addresses.
3. The DBXL installer creates a QdabraWebService folder on the site where it was installed. Please check that this folder allows *Read* permission to authenticated users. This is usually granted by DBXL installer automatically, but in rare cases the person installing DBXL will need to manually add the permission.

ERROR MESSAGE: CLIENT FOUND RESPONSE CONTENT TYPE OF 'TEXT/HTML; CHARSET=UTF-8', BUT EXPECTED 'TEXT/XML'

When installing DBXL (especially on servers with MOSS 2007) you may get the following error: *Error initializing DBXL database. Client found response content type of 'text/html; charset=utf-8', but expected 'text/xml'*. The error may also show as: *“The installation failed, and the rollback was performed. --> An error occurred configuring system doctypes.”* The event viewer, in turn, will show: *“Error bootstrapping system doctypes. Call to BootstrapSystemDocumentTypes at http://<servername>/QdabraWebService/ failed. Encountered a critical error and needs attention.”*

Here are some solutions to try if you encounter this:

- A. This error usually relates to local machine accounts not having database administration rights or membership in the SharePoint permissions groups. Verify that the account you are using to execute the installer and the Network Service (or the account you are selecting for DBXL) have administrative permissions in SQL.



<http://www.qdabra.com>

Last updated on 7/22/2016 12:27 AM

Copyright © 2006-2016 Autonomy Systems, LLC. All rights reserved.

- B. Once SharePoint is installed and the default SharePoint web site (on port 80) is provisioned, the "Default Web Site" on the machine is locked down. Typically, one would want to install DBXL on the "SharePoint - 80" web site. However, the initial configuration panel of the DBXL installer defaults to "Default Web Site". "Default Web Site" and "SharePoint - 80" are not the same, however -- ensure that "SharePoint - 80" is selected as the web site for installation.
- C. Ensure that the SharePoint site (from B above) is not stopped in IIS.

DBXL INSTALLATION PRODUCES AN HTTP ERROR 405

During installation, you may encounter an error that reads: *"The installation failed, and the rollback had been performed. Error initializing DBXL database. The request failed with HTTP status 405: Method not allowed."* The problem arises when ASP.NET has not been registered with IIS, which happens when .NET 2.0 is installed before IIS. To remedy this problem, run *aspnet_regiis.exe -i* found in *C:\WINDOWS\Microsoft.NET\Framework\{Version}*.

Note: DBXL v3.1 requires .NET 4.5.1.

DBXL INSTALLATION PRODUCES AN HTTP ERROR 404

There are four known reasons for an HTTP Error 404 when installing DBXL.

1. Please check that ASP.NET is enabled in the web service extensions of IIS manager. When setting up the server where DBXL is going to be installed, there is an option to allow ASP.NET applications under Windows Components Application Server. This needs to be installed in order for DBXL to install and run correctly.
2. Your site may be configured to use multiple hostnames or multiple IP addresses. If DBXL picks the wrong hostname/IP, the installation could fail. The easiest workaround is to access your site settings (via the IIS management console) and temporarily remove all hostnames/IP addresses that will not work. Make sure to leave only the hostname that the currently logged-in user can access. After DBXL installs successfully, you can re-add the additional hostnames and/or IP addresses.
3. The HTTP 404 error could be caused by a proxy setting in Internet Explorer. Please disable the proxy to allow the installation to succeed.
4. The final possibility involves applications that use ports 80 or 443. The next section covers this scenario.

DBXL WILL ASSUME SSL PORT NUMBER WHEN INSTALLING ON A SITE WITH HTTPS

If you install DBXL on a website configured to use https but later change the configuration to http and reinstall DBXL, you will receive the error *"Could not initialize the database"*. When you configure the web site to use https it stores the port number as 443. Then, when you remove the server certificate from the default website and reconfigure it to use http, it is not removing the SSL port number from that default website. To prevent this problem, you will have to remove the port number manually. In inetmgr, open the properties of the web site which was configured to use https and delete the SSL port number.



DBXL INSTALLER ENCOUNTERS 503 ERROR

When installing DBXL, you may encounter the following message: *"The installation failed, and the rollback has been performed -->Error initializing DBXL database. --> the request failed with HTTP status 503: Service unavailable."* Should you come across this:

- 1) Make sure the App pool is not stopped. If it is stopped, there is likely a problem with the user account and password combination being used. You can try resetting it in the Identity tab of the app pool's property page, then restart the app pool, and then try installation again.
- 2) Make sure that you installed to the correct site (and not a disabled site).
- 3) If using SharePoint 2007, make sure the Network Service account is in the WSS_WPG group.

IIS SITE CONFIGURED TO RUN AS 32 BIT MAY NOT WORK WITH DBXL 64 BIT

The Cablib.dll installed with the 64bit installer is for a 64bit environment. But it may be that an IIS site is configured to run as 32bit and thus fails to load the 64bit cablib.dll. If this is the case, please try installing the 32bit version of DBXL.

VIRTUAL DIRECTORY NOT CREATED DURING INSTALLATION

During installation, you may encounter the following error: *"The specified path '/LM/W3SVC/769376297/ROOT/QdabraWebService' is unavailable."* This causes the installer to stop. A workaround is to click **OK** in the error dialog, then go to IIS Administration and create the virtual directory. The QdabraWebService folder should have been created under the website; right-click on it, select **Properties**, click **Create** and click **OK**. Then switch back to the installer and complete the installation.

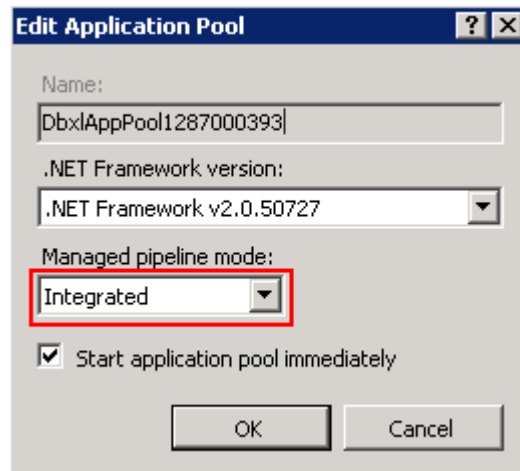
SITE DROPDOWN DEFAULTS TO HTTPS

During installation the site dropdown will default to https on some environment, even if there is no SSL certificate installed. Change the dropdown to not use https if no certificate is configured; otherwise installation might fail.



REINSTALLATION OF DBXL WILL NOT WORK IF APP POOL IS CHANGED TO INTEGRATED PIPELINE MODE

During installation of DBXL, the DBXL App Pool is set to Classic .NET App Pool by default. If later you change the DBXL App Pool to “Integrated” Pipeline mode to support SharePoint workflow, reinstallation of DBXL will not work.



To prevent this problem, you will have to delete the DBXL App Pool. In IIS, open the Application Pool and delete the DBXL App Pool from the list, and then re-run the installation.

DISABLE LOOPBACK CHECK TO COMPLETE INSTALLATION

On load balanced servers you might encounter an issue installation DBXL; this is an issue encountered for any web service, not just DBXL. The issue is well described in the following link:

<http://blog.crsw.com/2008/10/14/authorized-401-1-exception-calling-web-services-in-sharepoint/>. Microsoft Support also discusses the issue here: <http://support.microsoft.com/default.aspx?scid=kb;EN-US;896861>. To install DBXL,

- Add the DisableLoopbackCheck registry entry discussed in this Microsoft KB article. Note: you will need to reboot your server before the DisableLoopbackCheck takes effect.
- Be sure to add your load balanced host name for your web farm to the Hosts file on each front end web server. Use the loop-back IP address (127.0.0.1). This will ensure that each web server looks at itself to access the web services preventing any trips back out to the load-balancer – and possibly calling the web service another web server in the farm. This will be much less efficient.

If this problem appeared to be inconsistent (sometimes erroring, sometime successful), this is most likely due having multiple web servers. The call to the web service will be successful if by chance the load balance redirected the call to the same (self) web server to access the web service. It will fail when trying to call across to a different web server.



DBXL INHERITS MODULES FROM PARENT SITES

When installing DBXL Server edition, you may run into an error that begins with the following text:

```
Error bootstrapping system doctypes
Client found response content type of 'text/html; charset=utf-8', but expected 'text/xml'.
The request failed with the error message:
```

Please review the entire error recorded in the Event Viewer; it may mention of <httpModules>. If it does, it is likely that some SharePoint or web site add-on may not function properly with DBXL's application pool. These modules are inherited by the QdabraWebService from parent sites.

This can be easily resolved by specifying it be removed for the QdabraWebService virtual directory. You can edit the SharePoint web.config, in the parent folder of the QdabraWebService. Add the following section just before the </configuration> at the bottom of the web.config file.

```
<location path="QdabraWebService">
  <system.web>
    <httpModules>
      <remove name="<your_module_name_here" />
    </httpModules>
  </system.web>
</location>
```

DBXL inherits the web.config settings, and manual exclusion using the <location> node is the only way to exclude them without uninstalling them. Of course, the other option would be to uninstall the solution which had originally added the httpModule.

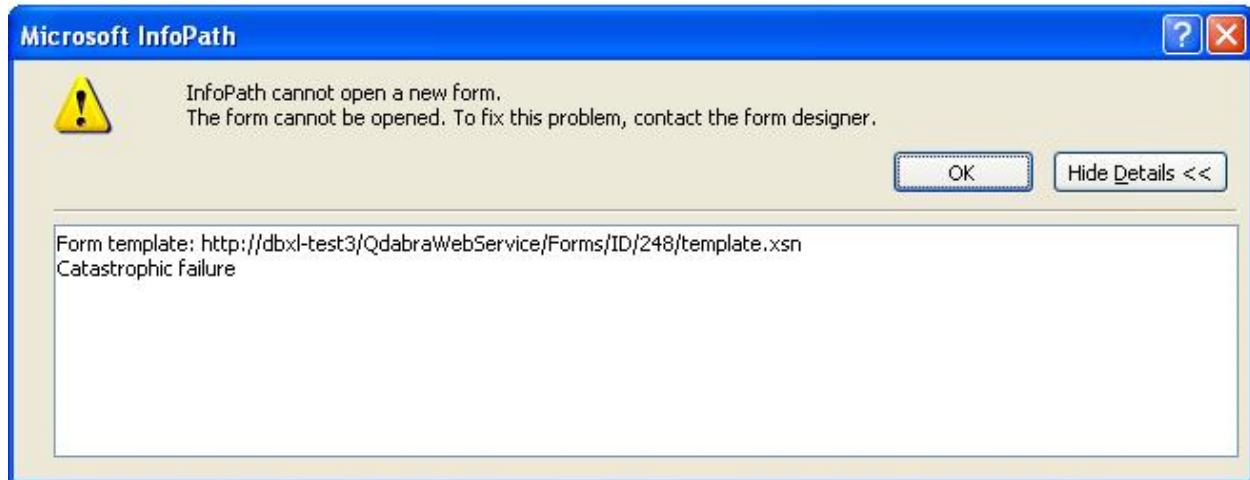
This could also happen with <httpHandlers>, in which case they can be excluded as show below:

```
<location path="QdabraWebService">
  <system.web>
    <httpHandlers>
      <clear />
      <add path="trace.axd" verb="*" type="System.Web.Handlers.TraceHandler" validate="True" />
    </httpHandlers>
  </system.web>
</location>
```



ERROR WHEN ADDING A CONTENT TYPE MAPPING TO A SIGNED FORM WITH CODE

If your InfoPath form template is a signed form with code, and you want to use a content type mapping, you might encounter an error when saving the document type in DAT.



The steps to reproduce this error are as follows:

1. Publish XSN as site content type to a SharePoint library [ShPLibrary1].
2. Add the content type to ShPLibrary2.
3. Add the published content type to DBXL using link in ShPLibrary1 [e.g. <http://<servername>/MyContentTypes/InvistaForm.xsn>]
4. Check "Form template is signed".
5. Go to **SharePoint** tab in DAT.
6. Insert mapping to <http://<servername>/InvistaTest4/Forms/AllItems.aspx>
7. Click Save.
8. Click Download button in DAT's **General** tab.

Thought it's not clear why InfoPath shows "Catastrophic failure", it is not possible to open signed forms from DAT, so this is not a valid scenario because the publishUrl in the XSN will be different from DBXL's template URL. In place of the error shown above, it is possible that you obtain a different error (about not being able to open the form from its location) for the same scenario.



DBXL PERMISSIONS WHEN SANDBOXING FORMS IN SHAREPOINT 2010

If you're working on SharePoint 2010 and your InfoPath form has code, DBXL will be using the Sandboxing feature in SharePoint to publish the form. If using the qRules command SaveToDbxl, you might encounter the following error:

```
Action: SaveToDbxl. Arguments: submit: SubmitDocument
xpath: /my:myFields/my:File
. Details: I0033Access denied. Stack:   at Qdabra.Utilities.SubmitDocument(String docType, String name, String
author, String description, SubmitDocument submitDocument, XPathNavigator xml, String& docId, String& refId)
   at Qdabra.Tools.RulesLibrary.Commands.SubmitQdFileToDbxl(String submit, String domainId, String&
base64Value, String& fileName, String& fileExtension)
   at Qdabra.Tools.RulesLibrary.Commands.SaveToDbxl(String submit, String dsname, String xpath, Boolean
qdimage, String domainid)
   at Qdabra.Tools.RulesLibrary.Commands.SaveToDbxl()
   at Qdabra.Tools.RulesLibrary.Commands.ExecuteCommand()
```

In that sample scenario, the workaround is to enforce permission in the QdFile system docypte so that everyone (NT AUTHORITY\Authenticated Users) is allowed to **Add**. This is necessary because, when using sandbox, users authenticate as the service account, so the service account needs permissions to add QdFiles.

IF LEFT IDLE, SUBMIT BUTTON IN BROWSER FORM FAILS

In browser (IPFS) forms you might have issues with the submit button if the form is left idle. Please check the following:

1. There is a proxy server set in Internet Explorer and the Sharepoint URL was not in the bypass list. Make sure you bypass the proxy when using QdabraWebService.
2. Open Sharepoint Central Administration > Application Management > Configure InfoPath Forms Services and make the following changes:
 - Default Data Connection Timeout: 60000
 - Maximum data connection timeout: 60000
 - Number of postbasks per form session state: 200
 - Number of Actions per postback: 400
 - Maximum size of form session state: 4096
 - Select the location to use the storing form session state: Set this radio button to "form view"
3. Open the Infopath form in design mode and click on Tools > Form Options > Browser. Deselect the option to "Refresh the form before submitting it if form data might change during processing".



SHAREPOINT 2010 AND TRUSTED ROOT CERTIFICATES

SharePoint 2010 requires adding trusted root certificates in SharePoint Central Admin before SSL connections can be established in IPFS forms. If you encounter problems with data connections in browser-enabled (IPFS) forms on, please verify whether these certificates have been added.

INSTALLATION FAILS DUE TO SQL CONNECTION REFUSED

If the DBXL install fails because the SQL connection was refused, it could be that the SQL Server is too busy to handle the connection. The installer attempts to determine if SharePoint is installed, which can result in the SharePoint site being started if it isn't already running. Depending on your system resources, the startup of SharePoint may prevent SQL Server from having resources to handle additional connections. The workaround is to ensure that the SharePoint site has been pre-loaded on the system before continuing the installation. The steps are as follows:

1. Start the DBXL installer and proceed to the setup dialog with the tabbed pages.
2. Using Internet Explorer, navigate the homepage of the website that DBXL is being installed.
3. If the site shows an 'Cannot complete this action' error, wait a minute and click the 'Go back to site' link (or re-enter the SharePoint home page url). Repeat until the home page displays correctly.
4. Once the page displays correct, proceeded to finish the DBXL install.

MOVING THE DATABASES USED BY DBXL

1. Move of QdabraDBXL and QdabraUtility databases (where database name IS NOT changed)
 - a. Update the web.config to point to the new database server
 - b. Grant the DBXL account access to the QdabraDBXL and QdabraUtility databases.
 - i. If using Network Service, it will be DOMAIN\DBXLSERVERNAME\$
 - ii. If using Domain account, use domain\useralias
 - c. If Shredding databases are moved to same server as QdabraDBXL/QdabraUtility:
 - i. If using Network Service, it will be DOMAIN\DBXLSERVERNAME\$
 - ii. If using Domain account, use domain\useralias
 - d. Update mapping for each doctype to change Data Source of the shredding data connection.
2. Move of QdabraDBXL and QdabraSamples databases (where database name IS changed) *IMPORTANT: There are QdabraDBXL database references in the QdabraUtility database. The only way to fix these is to reinstall DBXL using existing databases. Since the installer script does not drop and recreate, we will need to update DBXL scripts to drop first and recreate.*
 - a. Uninstall DBXL
 - b. Restore databases to new server
 - c. Install DBXL using existing databases
 - d. Update mapping for each doctype to change Data Source of the shredding data connection.
 - e. Grant reader/writer access to shredding databases for DBXL service account
 - i. If using Network Service, it will be DOMAIN\DBXLSERVERNAME\$



- ii. If using Domain account, use domain\useralias
3. Moving DBXL front end
 - a. Move databases per steps in #1
 - b. Reinstall DBXL on new server, pointing to existing databases.
 - c. All doctypes will need to be resaved to fixup the xsn references. To do this simply click Edit then Save for each Document Type.



UPGRADING AND MIGRATION

UPGRADING

UPGRADING OVERWRITES STORED PROCEDURES ON QDABRAUTILITY

If you have created any custom stored procedures on QdabraUtility, upgrading DBXL will overwrite these custom changes, e.g. QdSendEmail. Before performing an upgrade, backup your existing databases, so that you may restore the modified stored procedures once the upgrade has been completed.

OFFICE 2013 AND FULL TRUST FORMS

Customers who choose to upgrade to Office 2013 must reinstall full trust forms after the upgrade. Examples of these full trust forms include the DBXL Standalone Dashboard, QueryBuilder and ReportBuilder.

To reinstall these full trust forms, you can use Qdabra's [FormsInstaller](#). The [instructions for installing QueryBuilder](#) apply for other Qdabra forms.

ReportBuilder is available [here](#).

The DBXL Standalone Dashboard is available on the machine where DBXL was installed, in this path: *C:\Program Files (x86)\Qdabra Software\Qdabra DBXL Standalone Edition*

SHAREPOINT MAPPINGS AFTER UPGRADING DBXL

Note: SharePoint Mappings are not supported in DBXL v3.1. Please install DBXL on a separate server.

This applies to users that have an existing SharePoint mapping (Integrated scenario) with a previous version of DBXL. SharePoint mapping has been updated to use the DBXL::Name token at the Title in SharePoint. If no DBXL::Name token is declared, then DBXL will use the DocID. In addition, DBXL will promote some additional columns. After upgrading DBXL, verify that open and submit works for existing documents without issues, then perform a Reshred All to update to the new promoted columns.



MIGRATION

IMPORTING DOCUMENTS WITH THEIR REFIDS INTACT

The ImportDocuments method allows the user to import documents with their RefID intact. To do this, a data connection to the service must be manually created, with the importExistingRefId parameter set to "true". The Document Type's "XPath to inject RefId to" field must be filled out with an appropriate XPath. Note that once the RefID XPath has been established, changing it will break previously submitted documents.

MIGRATION TOOL COULD FAIL TO IMPORT LARGE LOCAL FOLDERS

If you have over 100,000 documents you wish to import into a DBXL Document Type, the Migration Tool may fail to read the directory and import the files. If you encounter this issue, break up the import folder into smaller batches.



GENERAL NOTES

The following notes do not apply to a specific scenario.

INSTALLATION

DBXL CAN ONLY BE INSTALLED ON MACHINES THAT ARE PART OF A DOMAIN

Database Accelerator (DBXL) can only be installed on machines that are part of a domain. In order to verify that your machine is part of a domain, go to **Start**, right click **My Computer** and choose **Properties**. Select the **Computer Name** tab and click **Change**. Verify that your machine is part of a domain. Workgroups will not work. You may still choose to install DBXL on a non-domain machine but, as a result, parts of DBXL that deal with authentication (such as the Active Directory web service) will fail to work.

ISSUES WITH APPLICATIONS THAT USE PORTS 80 OR 443

Here is a scenario that could take place with DBXL: You obtain an error that says: *“Unable to start debugging on the web server. The server committed a protocol violation. Section=ResponseStatusLine”*. Then you discover (in the IIS Management Console) that the web site is not running. When you try to start, you get the error: *“Unexpected Error 0x8ffe2740 Occurred”*.

This issue is not exclusive to DBXL. It happens because some applications (e.g. Skype) use common communication ports (e.g. 80 for http or 443 for https) can conflict with Internet Information Server. If the application is installed prior to IIS, then IIS will not have access to these ports. This can cause a 404 error when trying to access a web page hosted on the local server and may also generate errors when starting a website.

One remedy is to uninstall the application and verify that IIS is serving pages properly. The application can be reinstalled and will choose a different port if IIS is already using the common ports. However, note that some applications, like Skype, allow you to choose different ports to remedy this situation without removing the application.

HOW TO ACTIVATE THE QDABRA DBXL FEATURE AT A SITE COLLECTION LEVEL

Running this line from the SharePoint Management shell will enable the DBXL for SharePoint feature on all sites of the root site collection:

```
Get-SPSite http://shpserver | Get-SPWeb -Limit ALL | %{ Enable-SPFeature -URL $_.Url -Identity 32cae11a-7c8d-479e-816d-4c2218a3df3f }
```



<http://www.qdabra.com>

Last updated on 7/22/2016 12:27 AM

Copyright © 2006-2016 Autonomy Systems, LLC. All rights reserved.

SQL DATABASES

DATABASE NAMES CANNOT CONTAIN SPACES

Installation of DBXL will fail and produce an error message when the database name entered contains a space. By default, the database names are QdabraDBXL and QdabraSamples. You may change these, but you must use a database names that do not contain spaces, periods or square brackets.

SQL FULL TEXT SEARCH

In many SQL installations, the full text search option may not be checked by default. In order for all of DBXL's search capabilities to work, you will need to make sure that the full text search option in SQL is installed. Otherwise, DBXL installation will continue, but DBXL will not have access to full text search.

SQL SETUP PRODUCES A RED FLAG ON ENVIRONMENT CHECK

On IIS 7, users may find running a web setup MSI on a Windows Vista machine may not generate any useful error messages. To remedy this, uninstall SQL and then make sure that all the IIS features are turned on. Then you can reinstall SQL, making sure that there are no red flags on environment check.

SQL CONNECTION ERROR CONCERNING THE SHARED MEMORY PROVIDER

During installation of DBXL you might encounter an error that reads: *The installation failed, and the rollback has been performed. Error initializing DBXL database. Cannot initialize database 'QdabraDBXL' on server '<servername>'. See eventlog for details.* In Event Viewer, the details of this error read: *Shared Memory Provider, error: 0 - No process is on the other end of the pipe.* The workaround requires disabling the shared memory protocol for SQL Server using the configuration tool. Note that this error should only take place when SQL server and DBXL are on the same machine.

SQL DEFAULT DATABASE NOT SET

After restarting SQL Server and/or IIS, you might encounter an error that reads "*Shared Memory Provider, error: 0 - No process is on the other end of the pipe*". Log into SQL Server under another admin login and check the properties stored for the usual login account. If you find that the default database is not set, reset the default database and then log in under the usual login account.

BEST PRACTICE FOR DATABASE REDUNDANCY WITH DBXL

Large enterprises generally have redundancy mechanisms in place for critical SQL databases and are managed by an IT staff. For those without the large IT staff to manage your systems, you may still need something more than nightly backups. For high-availability without high cost, SQL Server 2005 Standard and Enterprise Edition introduced database mirroring support. Using a passive SQL Server to mirror the DBXL database, you can obtain high-availability without the need for an additional SQL Server license. The SQL instance can be on an existing or new server (including VMs) with sufficient resources to host the database. Just remember when using VMs, that



failovers should reside on different physical hosts. For additional information, refer to SQL Server 2005 Books Online topic "[Overview of Database Mirroring](#)".

SQL Server 2005 Workgroup does not support database mirroring but does support transaction log shipping, which is similar to asynchronous database mirroring. For additional information, refer to SQL Server 2005 Books Online topic "[Understanding Log Shipping](#)".

Additional licensing information can be obtained [here](#).

"CANNOT GENERATE SSPI CONTEXT"

When working with DBXL, SQL is required. Some organizations deal with multiple SQL instances and this can create a problem if some SQL instances are on different domains. When we attempt to connect an SQL instance using SQL Server Management Studio, we might encounter an error that reads: 'Cannot generate SSPI context'. Here's a workaround if you find yourself in a similar situation:

1. Launch command prompt (cmd).
2. Use "runas" to launch SQL Server Management Studio. Specifying the userdomain\useralias of the account user.
3. For SQL Server 2008 Management Studio, the command will be similar to this:

```
runas /netonly /user:userdomain\useralias "C:\Program Files\Microsoft SQL
Server\100\Tools\Binn\VSShell\Common7\IDE\Ssms.exe"
```

For Microsoft SQL Server Management Studio 2005, you'll use this:

```
runas /netonly /user:userdomain\useralias "C:\Program Files\Microsoft SQL
Server\90\Tools\Binn\VSShell\Common7\IDE\Ssms.exe"
```

This should work on Vista, Windows 7 and Windows Server 2008, but has not been tested with 2003 or XP.

CHANGING THE DBXL DATABASE CONNECTION STRING AFTER INSTALLATION

If you change the ConnectionString in DBXL's web.config file such that it references a different database after installation, you must invoke InitializeDatabase to update the database schema. You can call the method by using Internet Explorer to navigate to <http://<servername>/QdabraWebService/DbxlAdmin.aspx>, click InitializeDatabase and click *Invoke*.



PERMISSIONS

USING NON-DEFAULT VALUES FOR PERMISSIONS PREVENTS DAT INSTALLATION

During installation of DBXL you may receive the error "*Error publishing Admin Tool: Access Denied*". This could be the result of using non-default values in the Permissions tab during installation. To complete installation, publish DAT manually. Log in to the server where DBXL was installed and navigate to the default.asmx page. Click on the DBXLAdmin web service and then invoke the "PublishDATFormTemplate" web method.

USERS MUST HAVE READ PERMISSIONS FOR THE DOCUMENT TYPE

The QueryDocuments web method requires Document Type Level *Read* permissions. If a user only has Document-Level *Read* permissions, the QueryDocuments web method will return the error "*Access Denied*". This limitation will be addressed in a future version of DBXL.

CHANGING DOCUMENT LEVEL PERMISSIONS REQUIRES RESHREDDING

If you add or change Document Level permissions for a configuration in DAT, the new permissions schema will not be enforced for documents that were created previous to the change. Please reshred documents to update existing documents.

ADD PERMISSIONS TO THE QDABRAWEBSERVICE FOLDER

Typically it is sufficient to add admin users to the DbxlAdminAlias and the AdminGroupAlias as specified in the web.config file. This grants admin permissions to the members of those groups. However, if you find that your users need additional permissions to access the DBXL web service, we recommend adding permissions to the QdabraWebService folder instead of adding the users to the WSS_WPG group.



DBXL ADMINISTRATION WEB PAGE (DAT)

DO NOT INCLUDE SPECIAL CHARACTERS IN DOCUMENT TYPE NAME

If the name of your Document Type contains special characters (for example: !@#\$%^&*) you will experience problems opening it. To workaround this limitation, please use a Document Type name that does not include special characters.

CANNOT REMOVE DOCUMENT TYPES THAT CONTAIN RESOURCES

After using the DbxlResource web service to create a new xml resource, you will receive an error if you attempt to delete the Document Type Configuration for which you have created the Resource. Before deleting such a Document Type, you must first delete the resource itself using the DeleteResource operation in DbxlResource.


RENAMING A DOCUMENT TYPE

Currently there isn't a way to change a document type's actual name via the DBXL Admin Tool's UI. It would typically be inadvisable to do so. A document type's Friendly Name, on the other hand, is designed to be changeable and in cases such as QdFlow e-mail notifications, it is the Friendly Name that matters. The steps to manually change the Friendly Name are:

1. Export the Document Type configuration using the DBXL Migration Tool.
2. Modify the exported XML to change the FriendlyName field value. This can be done in a text editor such as Notepad.
3. Re-import the configuration.

INDEXING FEATURES ON THE GENERAL TAB IN DAT

The General tab in DAT contains two features that allow DBXL to index its documents.

Indexes Update		
Name:	XPath:	Additional Options:
<input type="text"/>	<input type="text"/> 	<input type="checkbox"/> Enable Xml Indexes (requires extra storage spaces)
Insert Index		

The XPath index is for use with the QueryDocuments() method and this has been available in versions previous to DBXL v2.7.

Enable Xml Indexes (requires extra storage space)

In DBXL v2.7, a new checkbox is intended to specifically speed up data connections that call QueryDocumentNodeSets(). Note that enabling XML indexes increases the space occupied in the database, but improves performance, especially for large XML documents.



DATABASE MAPPING

GETDOCUMENTSUMMARYBYTYPE IS LIMITED BY SQL TO 2100 ITEMS

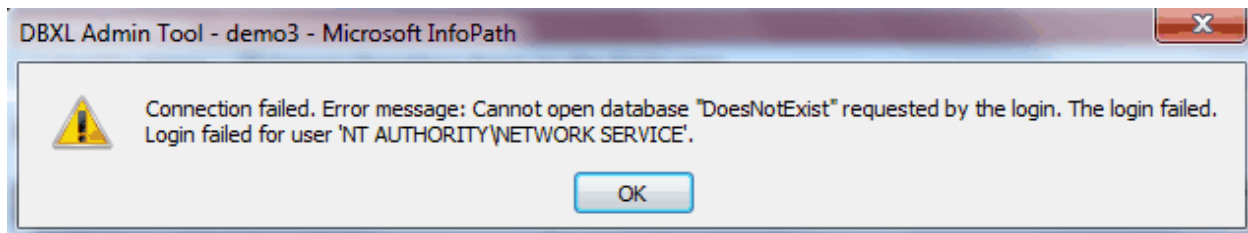
The web service GetDocumentSummaryByType will produce an error if the document type being queried contains more than 2100 items. This is a SQL limitation. If you need to perform this query, we suggest using the QueryDB web service.

SHREDDING WITHOUT A KEY RETURNS ERROR IN DATABASE MAPPING

Mapping a form to a SQL database requires the existence of either a key column or an identity column. If the table does not have an identity column, and the user does not designate a column as the “key” column in the Database tab, DAT will return a validation error to the user.

ERROR MESSAGE: CANNOT OPEN DATABASE REQUESTED BY THE LOGIN. THE LOGIN FAILED.

When saving a Database mapping, the following error might arise:



“Connection failed. Error message: Cannot open database <database-name> requested by the login. The login failed. Login failed for user <username>”

When facing this error, please check whether the database exists, whether your connection string is correct and whether the username in the error message has permissions to the database.

CANNOT MAP TO A DATABASE COLUMN THAT HAS IDENTITY SET TO ‘YES’

When you map the DBXL DocID (DBXL::DocID) to a column in your database, make sure the column does not have Identity setting of ‘Yes’. SQL tries to automatically set the value of identity columns, thus preventing the DBXL Web Service from setting it. This scenario leads to an error, and therefore you should never map a value into an identity column in the database.

DBXL DOES NOT SUPPORT 'YES' AND 'NO' AS BOOLEAN VALUES

When shredding Boolean values into a database, DBXL does not support 'yes' and 'no' as Boolean values. When shredding into 'bit' types in the database, the DBXL mapping should be 'Boolean' and the XML being submitted should set the field to either '1', 'true', '0' or 'false'.



CANNOT DELETE DOCUMENTS WHEN THERE IS A MAPPING ERROR

If a Document Type contains mapping errors, deleting a document in that Document Type will fail. Deleting the Document Type itself will also fail, because DAT attempts to delete all documents before deleting the Document Type. Remove the connection string in the Database tab, and then delete all documents. You will also need to manually clean up any databases where the data was previously mapped.

RESHRED ALL FAILS DUE TO TIMEOUT IN DAT

When working with large database mapping or a large number of xml documents, you might encounter a timeout if you attempt to *Reshred All* in DAT. To workaroud this issue, please download our Document Deployer (also known as the Migration Tool) to Reshred all documents in the background.



QUERYSHAREPOINT

QUERYING FOR A SPECIFIC VIEW

Using QuerySharePoint, we can query a specific SharePoint view.

The viewName parameter, however, refers to a view GUID, and not the view's name.

PROVIDING OTHER ARGUMENTS SHOULD OVERRIDE THE VIEW VALUES

There is a bug in some of the QuerySharePoint methods. Providing other arguments should typically override the view value (viewName). However, as of DBXL v2.8, this is not the case for GetDropdownEntries and GetDropdownEntriesSiteAndGuid.

For GetListItemsStr and GetListItemsStrSiteAndGuid, the correct behavior is see. That is, when the user provides both a viewName and a <query>, the (filtered) view is ignored, all items are returned and sorted according to the <query>.

These methods will be reviewed in a future version of DBXL to achieve consistent behavior.

QUERYSHAREPOINT FAILS ON SHAREPOINT 2003

If you are using SharePoint 2003 (WSS 2.0), users may encounter an error when calling the QuerySharePoint web service. The problem is due to the fact that SharePoint 2003 will not accept the human readable name as column name.

To workaround this problem, use the static name column as *value* for the following parameters: *tns:valueColumn*, *tns:displayColumn*, *tns:sortColumn* and *tns:sortOrder*. Remember to also modify your queries (in *tns:query* and *tns:filterXml* parameters) to use the static column name.

To get information about the static column name, navigate to `http://<server name>/QdabraWebService/QuerySharePoint.asmx`, and choose the DescribeListSchema method. You can then enter a SharePoint list name in order to retrieve all columns' static name values.

USING DYNAMIC QUERIES IN REPEATING TABLES

If you are using QuerySharePoint in a repeating table, you might encounter a problem with dynamic queries set in a repeating field. The query (as generated by Query Builder) will not get updated when inserting new rows. To fix this error, replace the value in the concat query that shows <value>, RepeatingField, " </value> with a current() parameter.

For example: `concat("<query><columns><column name='Product_x0020_Code'/></columns><filter><eq><column name='Product_x0020_Name'/><value>", current(), "</value></eq></filter></query>")`

If you experience the same with QueryDB, use the solution as recommended above.



USE CDATA WHEN WORKING WITH SPECIAL CHARACTERS

When using dynamic query in QuerySharePoint, data with special XML characters (& and <) will get rejected in the query and will return empty values in repeating tables. To avoid this problem, just add a CDATA tag in your concat query (the rule that sets the dynamic query for your QuerySharePoint connection). For example:

```
concat("<query><columns><column name='Product_x0020_Code'></column></columns><filter><eq><column name='Product_x0020_Name'><value><![CDATA[\", current(), \"]></value></eq></filter></query>")
```

Make sure the value inside the CDATA sequence uses the current() parameter in order to get the correct value in the repeating field that runs the query. If the same error occurs with QueryDB, use the same solution as recommended.



QUERYBUILDER

QUERY BUILDER USES THE LOCAL USER'S CREDENTIALS TO CONNECT TO SQL

QueryBuilder uses the person's local credentials to connect to SQL. Even if you enter a connection string with a username and password, while working within QueryBuilder, the local credentials are used. The workaround is to add database permissions for the user, even if temporarily, while designing the query in QueryBuilder. Once the query is designed, the user can be removed from the database permissions.

QDABRA'S QUERY BUILDER TOOL USES THE 2007 OM

Qdabra's Query Builder tool uses the 2007 InfoPath Object Model (OM). Therefore, it is not backwards compatible with InfoPath 2003. It is forward compatible with InfoPath 2010.

UNINSTALLING QDABRA'S QUERY BUILDER INFOPATH FORM TOOL

Qdabra's Query Builder InfoPath form tool needs to run with full trust so that it can execute shell commands. To install this full trust tool on your local computer, we use InfoPath's built-in support for URN based solutions. When the form is installed, InfoPath adds entries to your Windows registry. Unfortunately, due to a bug in InfoPath installer, sometimes uninstalling doesn't work and the registry entries are not cleaned up correctly. Please see [this document for help](#).

QUERYBUILDER DOES NOT SHOW USER-FRIENDLY COLUMN NAMES

When using older versions of QueryBuilder to build SharePoint queries, the form might display column names that are not user-friendly, as in the screenshot below.

The screenshot shows the Qdabra Query Builder interface. The 'Query Columns' table contains the following data:

Column Name
_x007b_857c8175_x002d_705a_x002d_460a_x002d_aee3_x002d_91721bc3bf71_x007d_
_x007b_0ca90904_x002d_6f51_x002d_4c97_x002d_a451_x002d_b908a75acbc5_x007d_

The 'Field Selection' pane on the right shows a list of fields from a SharePoint list, including: Test Lib, Check In Con, Copy Source, Version, Form Name, Sample Field, Created By, Checked Out, Content Type, Created, Type, Edit, Modified By, Name, File Size, ID, Name, Name, Modified, Source Name, and Source Vers.

The **<query>** generated by QueryBuilder will still work, in spite of the column names. Please [upgrade to the latest version of QueryBuilder](#) to avoid this issue.



<http://www.qdabra.com>

Last updated on 7/22/2016 12:27 AM

Copyright © 2006-2016 Autonomy Systems, LLC. All rights reserved.

INVALID XML

When working with QuerySharePoint or QueryDB, you might encounter an error that says: “Data at the root level is invalid. Line 1, position 1”. This error indicates a problem with the <query> node. You could try using QueryBuilder to re-generate the value for <query>.

For example, in a dynamic query, you should check that the <query> that begins with concat() is used in rules and not in the data connection wizard.

ENCODED SPACES IN THE URL PRODUCE AN ERROR

When using QueryBuilder and QuerySharePoint, you need to enter the URL to your SharePoint list. Internet Explorer encodes spaces as %20, but DBXL produces an error if you use a URL containing a %20.

The workaround is simply to replace %20 in the URL with an actual space. This works in QueryBuilder as well as in the InfoPath data connection wizard.



QUERYDB

USER ENCOUNTERS "DATABASE NOT REGISTERED FOR USE" ERROR WHEN CALLING QUERYDB

Before you can begin using the QueryDB web service, the database being queried needs to be added to DBXL's web.config file. Specifically, an entry of the syntax `<database alias="DB_Alias" name="SampleDB" server="default" />` must be added to the configuration/qdabra.dbxl/enumdb/databases node. The SQL server declared during installation (where the databases QdabraDBXL and QdabraSamples are located) is added by default, but any additional databases must be added individually.

QUERYDB USES THE CREDENTIALS OF THE WEB SERVICE INSTEAD OF THOSE OF THE QUERYING USER

QueryDB currently only uses permissions that are defined on the SQL Server that it is querying. Because the QueryDB web service acts as a liaison between the end user and the database, the database only receives requests from the web service. This means that any user accessing the web service has the same permissions as the user account (generally NETWORK SERVICE) that the web service is running as. Since most users have less permissions as the NETWORK SERVICE account, this is considered an Elevation of Privilege security hole. One way to reduce the risk is to create a new account for the web service to run as, and only allow that account access to query the DB. Qdabra will address this issue in a future release.

USING QUERYDB WITH A DYNAMIC SQL TABLE

If your SQL table has the potential to change (for instance, adding a new column), you should have QueryDB access a SQL view instead of directly accessing the table. This will allow the underlying table to change and small modifications to the view will prevent your InfoPath solution from breaking.

HOW CAN USERS QUERY NON-DBO TABLES USING QUERYDB?

When calling the QueryDB web service, you'll get an error message when querying non-DBO tables, such as certain AdventureWorks tables (e.g. HumanResources.Employee). This is a known limitation of the web service which will be addressed in a future version.

One workaround would be to give each table a separate view.

Another option is to manually change the `table=""` attribute to have the value SCHEMANAME.TABLENAME. This would allow you to query tables in any schema.

INVALID XML

When working with QuerySharePoint or QueryDB, you might encounter an error that says: "Data at the root level is invalid. Line 1, position 1". This error indicates a problem with the <query> node. You could try using QueryBuilder to re-generate the value for <query>.



<http://www.qdabra.com>

Last updated on 7/22/2016 12:27 AM

Copyright © 2006-2016 Autonomy Systems, LLC. All rights reserved.

For example, in a dynamic query, you should check that the <query> that begins with concat() is used in rules and not in the data connection wizard.

QUERYING THE QDABRADBXL DATABASE

The DBXL database should be accessed via QueryDB using the built-in alias #DBXLDB#. No additional alias is needed or should be added in web.config.

When the #DBXLDB# alias is used, QueryDB has logic to prevent access to vital columns in the Document and DocumentHistory tables, unless these are specified by the form designer in the queryxml. The specific columns that are excluded are: DataExtractedPlaintext, DocumentXml and DocumentIndexedXml.



MISCELLANEOUS

MODIFY THE DURATION OF DBXL LOCKS

When editing an XML, DBXL locks documents for 30 minutes by default. If you wish to modify this setting, please edit the DBXL web.config form, and change the DocumentLockDurationInMinutes parameter. Setting this to -1 (negative one) will make it an infinite timeout.

ACTIVE DIRECTORY WEB SERVICE QUERY FAILS ON WINDOWS XP

If you install DBXL to Windows XP and you cannot query the Active Directory Web service (ADUserInfo.asmx) you will have to manually configure your machine's ASP.NET account. To verify that this is the problem, navigate to <http://machine/QdabraWebService/ADUserInfo.asmx>, click *GetMyInfo* and *Invoke*. If you don't get XML you will need to follow [the configuration steps detailed in this document](#).

DBXL RETURNS LICENSING/DOMAIN ERROR WHEN SQL IS UNAVAILABLE

If SQL Server Agent is not running for some reason, opening DAT results in this error:

***The query cannot be run for the following DataObject: GetMyDomains
InfoPath cannot run the specified query.
The SOAP response indicates that an error occurred on the server:
System.Web.Services.Protocols.SoapException: Server was unable to process request. --->
System.ApplicationException: You have not installed a license to use the ADUserInfo service.
at Qdabra.Dbxl.WebService.AdUserInfo.GetMyDomains()
--- End of inner exception stack trace ---***

DBXL cannot get licensing information because there's a problem with SQL. Restarting the SQL services usually solves this issue.

INFOPATH ERRORS ON OLDER OFFICE SERVICE PACKS

You might encounter the error below if you have upgraded .NET but have not installed the latest Office service packs:

*System.Security.SecurityException
Request failed.
at Microsoft.Office.InfoPath.MsxmlNavigator.IsValidNode(MsxmlNode test)
at Microsoft.Office.InfoPath.MsxmlNavigator.MoveToFirstChild()
at MS.Internal.Xml.XPath.XPathChildIterator.MoveNext()
at MS.Internal.Xml.XPath.ChildrenQuery.Advance()
at MS.Internal.Xml.XPath.AttributeQuery.Advance()
at MS.Internal.Xml.XPath.XPathSelectionIterator.MoveNext()
at System.Xml.XPath.XPathNavigator.SelectSingleNode(XPathExpression expression)
at System.Xml.XPath.XPathNavigator.SelectSingleNode(String xpath)*



<http://www.qdabra.com>

Last updated on 7/22/2016 12:27 AM

Copyright © 2006-2016 Autonomy Systems, LLC. All rights reserved.

at Qdabra.Tools.RulesLibrary.Commands.ExecuteCommand(Application application, XmlFormHostItem formHost, XPathNavigator commandsNavigator)
 at Qdabra.Tools.RulesLibrary.FormCode.QdabraRules__Command_Changed(Object sender, XmlEventArgs e)
 at Microsoft.Office.InfoPath.Internal.XmlEventHost.GenericProxy(Object genericDelegate, DataDOMEvent dataDOMEvent, InfoPathEvents type)
 at Microsoft.Office.InfoPath.Internal.XmlEventHost.ChangedProxy(DataDOMEvent dataDOMEvent)
 at
 Microsoft.Office.Interop.InfoPath.SemiTrust._DataDOMEventSink_SinkHelper.OnAfterChange(DataDOMEvent pDataDOMEvent)

To solve, this simply install the latest Microsoft Office service packs.

NOTIFICATIONS EMAIL IS DELIVERED INTO THE JUNK E-EMAIL FOLDER

Microsoft Outlook (and other mail programs) may classify notification email as junk. To avoid this, add the sender to the “safe list” of your mail software. In the case of Microsoft Outlook, follow these steps:

1. Right-click on the email that was delivered to the Junk e-mail folder.
2. Choose *Junk E-mail*, click *Add sender to Safe Senders List*.

DIGITALLY-SIGNING DOCUMENTS FOR USE IN DBXL

To track documents, DBXL inserts a processing instruction into the XML on submit, which includes a unique DocID. After initial insertion, the DocID is used to identify the document when it is resaved, deleted, or reshredded. As a result of this insertion, you cannot digitally sign a document before submitting it for the first time. To workaround this, please read the document called [How to use Full Trust form templates in DBXL](#), which includes a tool that allows for a workaround.

UPLOADING LARGE ATTACHMENTS IN DBXL

When uploading large attachments in DBXL, a time-out error is likely to occur. This error is due to the IIS maxRequestLength setting in web.config. maxRequestLength is an optional Int32 attribute. It specifies the limit for the input stream buffering threshold, in KB. This limit can be used to prevent denial of service attacks that are caused, for example, by users posting large files to the server. The default is 4096KB. If the threshold is exceeded, a ConfigurationErrorsException error is thrown. To work around this limit, follow the steps in this [document](#).

DOCUMENTS OPEN IN READ-ONLY MODE IN WINDOWS VISTA

If the client machine has Vista installed, DBXL documents open in InfoPath on Read-only mode. This has been a known issue in Vista. To get around this, you need to setup a Web folder connection from the client to the server machine where DBXL is installed.

1. In the Vista client machine, go to Start, right-click Network and select Map Network Drive. Alternatively, go to Start > Computer, and on the taskbar, click on Map network drive.
2. On the Map Network Drive dialog, click Connect to a Web site that you can use to store your documents and pictures.



<http://www.qdabra.com>

Last updated on 7/22/2016 12:27 AM

Copyright © 2006-2016 Autonomy Systems, LLC. All rights reserved.

3. The Add Network Location wizard will open. Click Next.
4. Select Choose a custom network location and click Next.
5. In the Internet or network address field, enter your server url in the format, `http://<servername>/QdabraWebService`, and click Next.
6. When prompted, enter your Username and Password and click OK.
7. Type a name for your network location, and click Next, then Finish to exit the wizard.
8. Verify that you can now open DBXL documents in Read/Write mode.

Note that this workaround is session-based. When you log off your machine and log back on, Vista will override your credentials again. Since you have already setup a Web folder connection to your server, you just have to open the Web folder and enter your Username and Password once. Vista will then cache your credentials for that particular session.

PRESERVE MORE ERROR EVENTS IN EVENT VIEWER

To preserve more error events in your event log, open Event Viewer, right click on Qdabra and select Properties. By default, the Event Viewer log is set to "Overwrite Events As Needed" and to a maximum log size of 2048Kb. You may change the default settings as desired.

REMOVING CLUTTER FROM THE QDABRA EVENT LOG

To help form developers debug their form mappings, DBXL logs informational messages to the Qdabra Event Log when a node is not found in the XML. If your form includes optional sections, a node missing from the XML is common scenario. Therefore, these messages will create unnecessary clutter. To stop these messages from being logged, set the `logShredWarnings` value in DBXL's `web.config` to `false`.



SQL CLUSTERING

DOCUMENT SUBMISSION FAILS DURING A FAILOVER

If a user tries to submit a document to DBXL at the same time that a failover is happening, the submission will fail with an error such as:

```

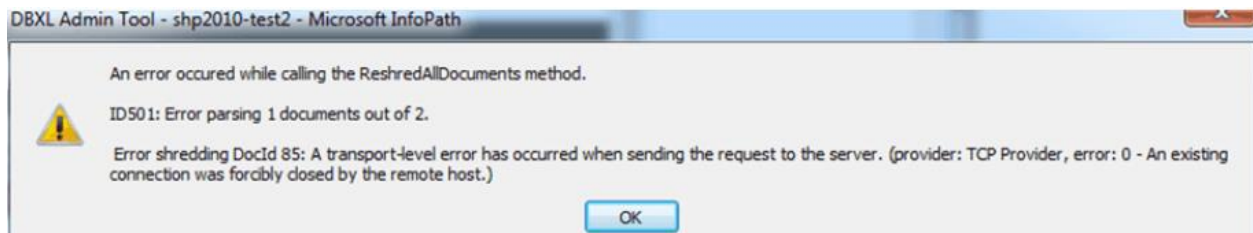
InfoPath cannot submit the form.
An error occurred while the form was being submitted.
The SOAP response indicates that an error occurred on the server:
System.Web.Services.Protocols.SoapException: Server was unable to process request. --->
System.Exception: Exception Code: I9999
Exception Message: An unhandled exception was thrown: Timeout expired. The timeout period elapsed
prior to completion of the operation or the server is not responding.
  at Qdabra.Dbxl.DbxlDocumentServiceEx.CheckAndThrowException(StatusInfo info)
  at
  Qdabra.Dbxl.DbxlDocumentServiceEx.Qdabra.Dbxl.Services.IDbxlDocumentServiceEx.SubmitDocument(St
ring docTypeName, String xml, String name, String author, String description, String allowOverwrite,
Int32& docId, String& refId)
  --- End of inner exception stack trace ---

```

The workaround is to allow the failover to complete, and then resubmit the document.

RESHRED ALL DURING A FAILOVER

If a **Reshred All** operation is executing at the same time a failover happens, the user will see an error such as:



Please allow the SQL failover to finish, then re-execute the **Reshred All** operation.



STANDALONE SCENARIO

INSTALLATION

STOP THE SERVICE BEFORE UNINSTALLING

Before uninstalling the DBXL Client (for example, to reinstall), you should STOP the service. This can be via the Control Panel > Administrative Tools > Services.

STANDALONE EDITION INSTALLATION ERRORS DUE TO SERVICE

If you uninstall DBXL Standalone Edition while the Standalone service is running, you'll get a prompt to select between **TRY AGAIN**, **CONTINUE** and **EXIT**. Please click **Continue** to finish installation. You can stop the service manually before uninstalling if you wish to avoid the prompt.

Sometimes the uninstaller is unable to delete the service. In this situation, please run a command line as an administrator, and then execute: **SC DELETE "Qdabra DBXL Standalone Edition"**. Once the service has been deleted, you may need to restart your machine before trying to reinstall DBXL.

INSTALLATION ERROR WHEN NETWORK SERVICE ACCOUNT LACKS PERMISSIONS

When installing DBXL Client on Windows 7, you might run into an installation failure with an error that reads: **"Failure registering DBXL Standalone dashboard. The remote server returned an error: (404) Not Found. encountered a critical error and needs attention."**

In the eventvwr, you might find a sequence of errors concerning the system document types:

```
Error deploying sample 'QdUser' encountered a critical error and needs attention:
System.Exception: Web method returned error: 10033: Access denied
at Qdabra.Util.SampleDeployer.ParseResponseForErrors(XmlDocument responseDoc)
at Qdabra.Util.SampleDeployer.DeployMapping()
at Qdabra.Util.SampleDeployer.DeployAllSamples()
The stack trace was: at Qdabra.Util.SampleDeployer.ParseResponseForErrors(XmlDocument
responseDoc)
at Qdabra.Util.SampleDeployer.DeployMapping()
at Qdabra.Util.SampleDeployer.DeployAllSamples().
```

The eventvwr might also have a failure installing the DBXL license:

```
Error loading trial license
Access denied encountered a critical error and needs attention.
```

One possible reason for this installation failure is that the Network Service account does not have permission on the %windir%\TEMP folder. Grant it full control and install should succeed.

Note that some machines will require a restart after granting these permissions.



STANDALONE EDITION CONFIGURATION FILE

The Client version of DBXL does not use a file called `web.config` for its configuration. Error messages produced by certain web services, such as QueryDB, may point to **web.config**. To address the issues, please modify the configuration file **Qdabra.Dbxl.Standalone.exe.config** instead of `web.config`.

STANDALONE DBXL SERVICE ALREADY EXISTS WHEN REINSTALLING

When reinstalling DBXL on your local (client) machine, you might be informed that the DBXL service already exists. Should this happen, launch a command line window and execute ***sc DELETE "Qdabra DBXL Standalone Edition"***. Once deleted, you'll be able to reinstall DBXL on your client machine.

DETERMINE THE DBXL PORT NUMBER

If you need to determine the port number that the DBXL Client was installed on, you can look at the config file located here:

C:\Program Files\Qdabra Software\Qdabra DBXL Standalone Edition\Qdabra.Dbxl.Standalone.exe.config

Or on 64-bit

C:\Program Files (x86)\Qdabra Software\Qdabra DBXL Standalone Edition\Qdabra.Dbxl.Standalone.exe.config

```
<services>
  <service name="Qdabra.Dbxl.Implementation.DocumentRetrieval.RequestHandlerRouter">
    <host>
      <baseAddresses>
        <add baseAddress="http://localhost:8000/QdabraWebService" />
      </baseAddresses>
```

DASHBOARD

DBXL STANDALONE VERSION REQUIRES SERVICE RESTART FOR CONFIGURATION CHANGES

Unlike the default IIS configuration (for a server version of DBXL), updating the configuration file will not cause the standalone service to restart. For config changes to take effect, you will need to recycle the "Qdabra DBXL Standalone Edition" service in the Administrative Tools/Services applet.

You can also open a command-line (as administrator) and execute:

net stop "Qdabra DBXL Standalone Edition"

net start "Qdabra DBXL Standalone Edition"

TEMPORARY FILES AND DISK SPACE WHEN USING THE DASHBOARD

When using the DBXL Standalone Dashboard, please ensure that the drive that contains the temporary folder (for example C:\Users\[username]\AppData\Local\Temp\) is **not** low on disk space. This is because InfoPath has a built-in mechanism that utilizes temp files with names of the format **mso####.tmp** whenever an InfoPath form is in use;



<http://www.qdabra.com>

Last updated on 7/22/2016 12:27 AM

Copyright © 2006-2016 Autonomy Systems, LLC. All rights reserved.

the Dashboard itself does not have any logic that utilizes temp files. Qdabra's investigation so far has revealed this to be default InfoPath behavior and not exclusive to the DBXL Standalone Dashboard.

AUTOMATIC SYNC FROM THE DASHBOARD ONLY SUPPORTED ON WINDOWS 7

If you want the Standalone Dashboard to sync documents automatically (on a scheduled task), you'll need to use Windows 7. Windows XP and Vista are not supported for automatic syncs.

USING THE DASHBOARD TO SYNC LARGE XML DOCUMENTS

If you are using the Standalone Dashboard to sync large XML documents, the download or upload operations may fail because of the document size. The configuration of DBXL (client or server edition) must be updated to increase the `maxStringContentLength`/`maxReceivedMessageSize`. The default is set to 10MB.

```
<binding name="http" maxBufferSize="10485760" maxReceivedMessageSize="10485760">
  <readerQuotas maxStringContentLength="10485760" />
  <security mode="TransportCredentialOnly">
    <transport clientCredentialType="Windows">
      <extendedProtectionPolicy policyEnforcement="Never" />
    </transport>
  </security>
</binding>
<binding name="https">
```

UPLOAD FAILS WHEN DASHBOARD SWITCHES TO ANOTHER SERVER

If you are using DBXL's standalone dashboard on your local machine, and DBXL is migrated to another server, you will need to perform a clean reinstallation locally.

1. Uninstall DBXL locally and delete both the databases (QdabraDBXL and QdabraUtilities).
2. Migrate your remote (server) DBXL installation.
3. Install DBXL locally.

Once you do this, your local dashboard will be able to sync correctly with the new DBXL server.

DELETING FROM SHAREPOINT DOES NOT DELETE ON STANDALONE COPY

If you are using the Standalone Dashboard to sync documents from SharePoint, note that documents must be deleted manually in both the local DBXL and the remote SharePoint.

NO WARNING IN THE DASHBOARD WHEN THE LICENSE LIMIT IS REACHED

When performing a sync in the Dashboard, the user typically sees a dialog box showing the number of successful and failed documents. If the DBXL license limit is reached during the sync operation, this dialog box will not show that message. To verify your license limits, please check the DBXL Admin Tool (DAT).



SUPPORT

If you have questions about the information in this document, please contact Qdabra Software for assistance.

Licensed customers can contact us via Support@Qdabra.com.

You can also use the InfoPathDev.com [Qdabra Product support forums](#) to request help from the community.

Contact Information

Qdabra Software
218 Main Street, Suite 731, Kirkland, WA 98033

Phone: 877.544.2389
Email: Support@Qdabra.com
Website: <http://www.qdabra.com>
Community: <http://www.infopathdev.com>



<http://www.qdabra.com>

Last updated on 7/22/2016 12:27 AM

Copyright © 2006-2016 Autonomy Systems, LLC. All rights reserved.