



DBXL v3.0 Installation Guide

This document will guide you through the installation of DBXL v3.0.

If you are upgrading from a previous version of DBXL, please contact [Qdabra support](#).

Before installing	2
Installation step by step	9
Post installation	15
Support	39



BEFORE INSTALLING

Before installing, please read the DBXL Deployment Guide.

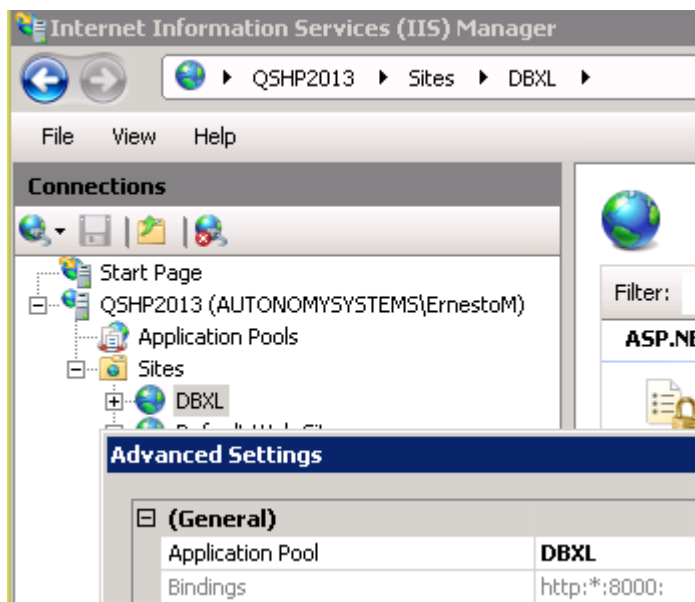
CHOOSING THE CORRECT INSTALLATION MSI

The installation package includes both a .NET 2.0 and a .NET 4.0 version of the DBXL installation files. Please select the correct version for your site. If the incorrect package is used, the installer will change the site's configuration and the site will remain broken until manually fixed up in IIS.

In general, if you are installing on SharePoint 2010, the .NET version will be 2.0 and if installing on SharePoint 2013, the .NET version will be 4.0.

If installing on a standalone website (as recommended in the step by step guide below), you can configure the site to use either .NET 2.0 or .NET 4.0. This information is shown in the IIS app pool configuration. The app pool for this root site is where the .NET version check needs to be done before installation. DBXL needs to use the same .NET version.

For example, here is a site called *DBXL* that also uses an application pool called *DBXL*:



The application pool *DBXL* is shown as using .NET 2.0.



Application Pools

This page lets you view and manage the list of application pools on the server. Application pools are associated with worker processes contain one or more applications, and provide isolation among different applications.

Filter: Go Show All Group by: No Grouping

Name	Status	.NET Framework Ve...	Managed Pipeli...	Identity	Applic
DBXL	Started	v2.0	Integrated	ApplicationPoolIden...	1

Therefore, when installing, **do not** use the .NET 4.0 MSI.

Here's another example, this time a site called *DBXL* that uses the *ASP.NET v4.0* application pool:

Internet Information Services (IIS) Manager

Q-DEV64-01 > Sites > DBXL

File View Help

Connections

Start Page
Q-DEV64-01 (AUTONOMYSYSTEMS\ErnestoM)
Application Pools
Sites
DBXL

Advanced Settings

(General)
Application Pool: **ASP.NET v4.0**

Under Application Pools, we see this app pool uses .NET 4.0:

Application Pools

This page lets you view and manage the list of application pools on the server. Application pools are associated with worker processes contain one or more applications, and provide isolation among different applications.

Filter: Go Show All Group by: No Grouping

Name	Status	.NET Frame...	Managed Pipeli...	Identity	Applications
ASP.NET 1.1	Started	v1.1	Classic	NetworkService	1
ASP.NET v4.0	Started	v4.0	Integrated	NetworkService	2

Therefore, we would use the .NET 4.0 installer.

SERVER REQUIREMENTS

The server where DBXL will be installed needs to meet the following requirements:



<http://www.qdabra.com>

Last updated on 10/14/2015 9:06 PM

Copyright © 2014 Autonomy Systems, LLC. All rights reserved.

- **Domain**
 - DBXL should only be installed on machines that are part of a domain. This can be verified in My Computer > Properties > Computer Name.
 - If you choose to install DBXL on a machine that is not joined to a domain, some aspects of DBXL that deal with authentication (such as the Active Directory web service) will not work.
- **SQL:**
 - DBXL is compatible with SQL 2005 (including Express edition), SQL 2008 (including Express edition) and 2012. It has not been tested with MSDE or SQL Compact, and it is not compatible with the Windows Internal Database.
 - Note that for all of DBXL's search methods to work, Full Text Search should be installed. If Full Text Search is not installed, DBXL will install (and log a warning in the eventvwr).
 - Qdabra recommends that the user installing DBXL be granted sysadmin permission on SQL. However, there are two installation scenarios that should work without users needing the sysadmin role:
 - SQL DBA pre-creates the databases and grants that user (who is installing DBXL) db_owner.
 - User has dbcreator permission.
- **SharePoint**
 - In the past, Qdabra Software recommended installing DBXL on the SharePoint – 80 site. Starting with the Event Receiver in DBXL v2.8, this is no longer the default scenario.
 - Event Receiver or Side-by-side: DBXL should be installed on a separate server. However, if a separate server is not available, DBXL can be installed on a separate site (on the SharePoint server).
 - Integrated: Should you wish to pursue the integrated scenario, install DBXL on the SharePoint-80 site.
 - DBXL v3.0 has been tested with SharePoint 2013 and 2010. It may be compatible with SharePoint 2007.
- **IIS**
 - DBXL requires IIS 5.1 or newer, configured to work with .NET Framework 2.0 or 4.0 (depending on your site).
 - For IIS 7.0, all IIS 6.0 compatibility features must be installed.
 - The DBXL installer adds the DBXL App pool account to WSS_WPG (when DBXL is installed on a SharePoint site) or IIS_WPG (when DBXL is installed on a non-SharePoint site).
 - When setting up the server, under Windows components application server, there is an option to allow ASP.Net applications. This needs to be installed in order for the software to install and run correctly.
 - The DBXL installer grants db_datareader and db_datawriter SQL permissions to the application pool identity.



- Anonymous Authentication must be disabled on the site where DBXL is going to be installed; otherwise, the installer might fail. Windows Authentication must be enabled on the site; otherwise the installer will stop with the following message. Once Windows Authentication is enabled, you may click Retry on the dialog box.




- DBXL v3.0 has not been tested with Windows Server 2003.
- The DBXL Installation will fail on sites that have the WebDAV Publishing IIS role installed. If WebDAV publishing shows as *Installed*, the DBXL installer will return a message such as the one shown in the screenshot below.



Note that uninstalling WebDAV may require a server restart. If one is needed, you will need to click Abort in the dialog shown above, then restart the DBXL installer after the server restarts.

Below is a screenshot of the IIS roles installed on one of Qdabra's internal servers, as an example.



Web Server (IIS)	
	Provides a reliable, manageable, and scalable Web application infras
Role Services: 41 installed	
Role Service	Status
Web Server	Installed
Common HTTP Features	Installed
Static Content	Installed
Default Document	Installed
Directory Browsing	Installed
HTTP Errors	Installed
HTTP Redirection	Installed
WebDAV Publishing	Not installed
Application Development	Installed
ASP.NET	Installed
.NET Extensibility	Installed
ASP	Installed
CGI	Installed
ISAPI Extensions	Installed
ISAPI Filters	Installed
Server Side Includes	Installed
Health and Diagnostics	Installed
HTTP Logging	Installed
Logging Tools	Installed
Request Monitor	Installed
Tracing	Installed
Custom Logging	Not installed
ODBC Logging	Not installed
Security	Installed
Basic Authentication	Installed
Windows Authentication	Installed
Digest Authentication	Installed
Client Certificate Mapping Authentication	Installed
IIS Client Certificate Mapping Authentication	Installed
URL Authorization	Installed
Request Filtering	Installed
IP and Domain Restrictions	Installed
Performance	Installed
Static Content Compression	Installed
Dynamic Content Compression	Installed
Management Tools	Installed
IIS Management Console	Installed
IIS Management Scripts and Tools	Installed
Management Service	Installed
IIS 6 Management Compatibility	Installed
IIS 6 Metabase Compatibility	Installed
IIS 6 WMI Compatibility	Installed
IIS 6 Scripting Tools	Installed
IIS 6 Management Console	Installed
FTP Server	Not installed
FTP Service	Not installed
FTP Extensibility	Not installed
IIS Hostable Web Core	Not installed



<http://www>

Last updated on 10/14/2015 9:06 PM

Copyright © 2014 Autonomy Systems, LLC. All rights reserved.

CLIENT REQUIREMENTS

The client machine is the computer that will access the DBXL Administration Tool and the DBXL web service.

- **Operating system:** Windows XP, Windows Vista, Windows 7 or Windows 8.
- **Permissions:** Ability to authenticate with the server where DBXL will be installed.
- **Office/InfoPath:** Microsoft Office 2003 (InfoPath 2003), Microsoft Office 2007 (InfoPath 2007), Microsoft Office 2010 (InfoPath 2010) or Microsoft Office 2013 (InfoPath 2013).
- **Browser:** Internet Explorer 7 or higher.
- **Local Intranet:** If the site where DBXL is going to be installed is not a part of your Local Intranet, users must add the website to the list of Local Intranet sites, by going to Internet Options > Security. This is required to ensure the system is given proper access from your local machine.

WINDOWS OR SQL AUTHENTICATION?

DBXL may use either Windows Authentication or SQL Server Authentication to connect to the database specified by the installer. The connection string that DBXL uses to connect to the SQL Server is stored in the web.config file of the web service.

When using Windows Authentication, this connection string is left unencrypted since it does not contain password information. The DBXL service account will be added to the db_datareader and db_datawriter roles for the DBXL databases during installation. The user account used to run the DBXL installation must be a sysadmin of the SQL Server instance.

If using a local account (e.g. Network Service) and a remote SQL instance, the machine account (e.g. <Domain>\<Machine>\$) is added to the db_datareader and db_datawriter role.

For SQL Server Authentication the connection string is encrypted to prevent unauthorized users from obtaining the password information. In addition, when using SQL Authentication, the SQL account specified must have database creation permission during the installation process. Once installed, the only permissions required are membership in db_datareader and db_datawriter roles.

	SQL Authentication	Windows Authentication
Local SQL Server	<ul style="list-style-type: none"> • Connection string is encrypted • SQL and Web Service users are separate 	<ul style="list-style-type: none"> • Connection string is not encrypted • SQL and Web Service users are the same
Remote SQL Server	<ul style="list-style-type: none"> • Same as Local SQL Server • Connection string for QueryDB connections must 	<ul style="list-style-type: none"> • Connection string is not encrypted



	be declared (unencrypted) in web.config.	<ul style="list-style-type: none">• User <Domain>\<Machine>\$ is added to the remote SQL Server as a db_owner.
--	--	--

Independent of the authentication method chosen, the user specified for connecting to the SQL Server is added to the QdabraDBXL and QdabraUtility databases in the db_datareader and db_datawriter roles.



INSTALLATION STEP BY STEP

This section contains step-by-step instructions for the installation of Qdabra's Database Accelerator v3.0.

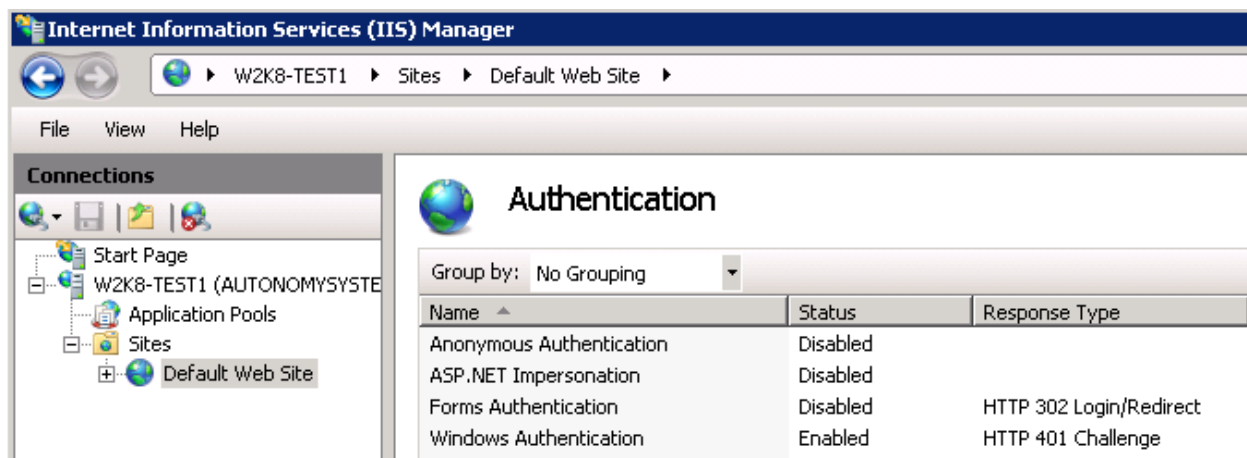
Before installing, close all instances of InfoPath.

CREATE THE SITE

This section is only required if following the Event Receiver scenario.

On the server where DBXL will be installed, a new site will be needed (if one does not exist already). Qdabra Software recommends installing DBXL on a standalone IIS web site that does not host SharePoint.

1. Create a new IIS site that uses Windows Authentication. Anonymous Authentication must be disabled.



2. Check permissions on the site's new folder and compare these to the permissions on the wwwroot folder. Add any missing permissions.
3. Check the firewall to ensure outside users can communicate with the site.

The installation package includes both a .NET 2.0 and a .NET 4.0 version of the DBXL installation files. Please select the correct version for your site. If the incorrect package is used, the installer will change the site's configuration and the site will remain broken until manually fixed up in IIS.

START THE INSTALLER

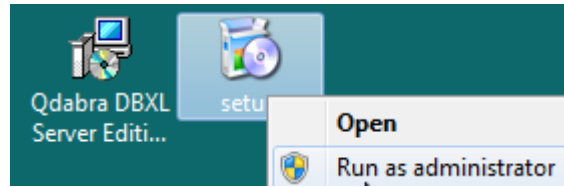
4. Right click on setup.exe and select **Run as Administrator**.



<http://www.qdabra.com>

Last updated on 10/14/2015 9:06 PM

Copyright © 2014 Autonomy Systems, LLC. All rights reserved.



5. Click **Next** in the **Welcome screen**.
6. After reviewing the **End User License Agreement**, select **I Agree** and click **Next**.

INSTALLATION ADDRESS

7. In the **Installation Address** screen, you will find a dropdown listing all sites. Select the desired **Site** for installation from the dropdown.
 - Note that **all sites (even sites that are stopped)** are listed in this screen. Make sure to select the correct site for installation.
 - Use IIS Manager to check the available sites to confirm that the correct site is being selected and that the site is not stopped.

For the Event Receiver scenario, select the new site created in the section above.

For the Integrated scenario, select the SharePoint-80 site.

8. The **Virtual Directory** is set to QdabraWebService by default, but this can be changed if desired.
9. Click **Next**, and in the **Confirm Installation** screen, click **Next** again.

You will see a bar indicating the progress of the installation. Once completed, you will see a screen with various tabs. The following sections describe each tab.

SITE

The Site tab allows you to select the site URL.

10. From the **Site Url** dropdown, select the desired site.
 - The **Site Url** dropdown will show a list of combinations of SSL and host headers defined in IIS.
 - If you select one of the options that does not use the machine name, the **Binding Detail** section will be disabled.
 - If you select one of the options that uses the machine name, the **Binding Detail** section will allow you to override the host header to be something not specified in IIS.



- If the site is using an alias, you will need to specify it in the host header field during installation.
- When installing DBXL in some environments, the default **Site Url** will be SSL. Do not select the HTTPS site unless you have configured a certificate.
- If the site will be accessed via HTTPS, you will need to configure the website for SSL before installing DBXL.
- If a fully qualified domain name is being used, that value should be entered in the hostname field during installation.
- This tab will also show you the expiration date for the trial license. If you notice that the trial license has expired, please download the most recent version from Qdabra.com or contact support@qdabra.com.

11. Click **Next** to proceed to the following tab.

LOG ON TAB

The **Log On** tab allows you to indicate the account which DBXL will run as.

12. Select between **Predefined** and **Configurable** account credentials.

- If you select **Predefined**, you will not need to provide credentials.

The Qdabra™ Database Accelerator will run under these account credentials. It will attempt to add this logon to SQL Server if using Windows Authentication account after installation by changing the DbxlAppPool identity in IIS. This account must be a member of the IIS_WPG security group.

Predefined Network Service

- If you select **Configurable**, you must provide an **Account** and **Password**.

Configurable

Account:

Password:

13. Click **Next** to proceed to the following tab.



<http://www.qdabra.com>

Last updated on 10/14/2015 9:06 PM

Copyright © 2014 Autonomy Systems, LLC. All rights reserved.

DOCUMENT SECURITY

In the **Document Security** tab you can set up permissions for DBXL. The DBXL installer automatically creates a local group called DbxlAdmins. You can add users to the DbxlAdmins group after installation has completed; the member of this group will be able to manage licenses, add document types, and manage access permissions to DBXL document types.

If you want to use your own group, make sure that you (the user installing DBXL) have been added to the group.

The screenshot shows the 'Document Security' configuration window. It includes the following elements:

- Tabs:** Site, Log On, Document Security (active), Active Directory Service, SQL Server.
- DBXL Admin:** Text box containing 'ERNESTO\DbxlAdmins'.
- Enable Global User Permissions:** A checked checkbox.
- Admin Group:** Text box containing 'ERNESTO\DbxlAdmins'.
- Writer Group:** Empty text box.
- Reader Group:** Empty text box.
- Browser Group:** Text box containing 'NT AUTHORITY\Authenticated User'.
- Help Text:**
 - Members of the DBXL Admin security group can add document types and manage access permissions to DBXL document types.
 - When global permissions are enabled, users in these groups will have the given access to all documents stored in DBXL. For fine grained permissions, uncheck to disable global permissions and set permissions on individual document types.

This screen has other options, such as the **Enable Global User Permissions** checkbox. If you uncheck **Enable Global User Permissions** checkbox, you will have to set permissions on every individual document type, since the Global Permissions will not be enforced. Disabling global permissions does not make DBXL “wide-open”. On the contrary, it restricts access to DBXL.

14. Click **Next** to proceed to the following tab.

ACTIVE DIRECTORY SERVICE TAB

The **Active Directory Service** is used to obtain username and other Active Directory Information. In the **LDAP Path** textbox, the default value is populated from the system when a domain controller can be contacted.

15. If the domain controller cannot be contacted, the LDAP Path will default to LDAP://DC=domain. You'll need to manually enter the LDAP Path (for example: **LDAP://DC=DomainName,DC=com**).



Site	Log On	Document Security	Active Directory Service	SQL Server
------	--------	-------------------	--------------------------	------------

The Active Directory Service provides InfoPath forms with a quick and easy way to obtain username and other Active Directory information.

LDAP Path:

Enter the LDAP path to be used to resolve Active Directory inquiries to the Active Directory Service (ADService.asmx). The default value is populated from the system. NOTE: The default value is only available when a domain controller can be contacted.

16. Click on **Next** to go to the following tab.

SQL SERVER TAB

In the **SQL Server** tab, indicate the database where DBXL will store its data.

17. Select the **SQL Server name**. The dropdown will list all local SQL instances that were detected by the installer. For example, in the case of a SQL Express installation on the same machine, this will be **(LOCAL)\SQLEXPRESS**. You may still type in the name of a remote SQL instance, if desired, or if the installer fails to list the correct SQL instance.
18. Select the **Authentication** type used to access the SQL server from the dropdown
 - If you select **Windows Authentication**, no credentials will be necessary. The account of the user installing DBXL will be used to connect and create the database and thus requires sysadmin permission. The account used for the DBXL application pool will be granted db_datareader and db_datawriter permission during setup.
 - If you select **SQL Server Authentication**, fill out the **User name**, **Password** and **Confirm password** fields. The SQL account is used to create the database, and thus Qdabra recommends granting sysadmin rights. Once the database is created and installation has completed, the user rights can be reduced to db_datareader and db_datawriter roles.

19. Enter the **Database** where DBXL documents will be stored.

Installation of DBXL will fail and produce an error message when the database name entered contains a space. By default, the database names are **QdabraDBXL** and **QdabraUtility**. You may change these, but you must use database names that do not contain spaces.



<http://www.qdabra.com>

Last updated on 10/14/2015 9:06 PM

Copyright © 2014 Autonomy Systems, LLC. All rights reserved.

This tab contains one more option, **Use existing databases**. You only need to use this if you had a previous installation and want to reuse the same databases.

FINISH THE INSTALLER

20. Click on **Finish** to complete the installation.

You will see another bar, called **Configuration Status**, indicating the progress of the installer. This status will change as the installation executes. When it finishes, click **Close** in the **Installation Complete** screen. Internet Explorer will open showing default.htm, from where you can access the **Forms, Documents** and **Web service descriptions**. We recommend adding a bookmark to this page (default.htm).



SYSTEM DOCUMENT TYPES

In DAT, verify that the system document types (needed by DBXL to operate) were created during installation. Expand the section for System document types. You should see the following listed:

System Document Types			
Name	Descriptions	Docs	Edit
DAT		0	
QdAttachment		0	
QdCategory		0	
QdDocumentIndexFields		22	
QdDocumentType		23	
QdDocumentTypePermissions		22	
QdDocumentTypeProperties		22	
QdDomain		0	
QdEmailFlow		0	
QdFile		0	
QdHierarchy		0	
QdImage		0	
QdMapping		22	
QdNodeNamespaces		22	
QdNotification		0	
QdRatings		0	
QdRefIdInfo		29	
QdSharePointListMaps		22	
QdStandaloneDashboard		0	
QdStandaloneLog		0	
QdTags		0	
QdUser		0	
qFormTemplate		0	

LICENSING

DBXL v3.0 comes with a trial license that is automatically configured during installation. Verify that the license was configured. In DAT, click on **Configure Licenses**. If you do not see a DBXL Trial License already configured AND you are a member of the DBXL Admins group, your installation has run into issues. Please contact Qdabra Software.

CLEAN UP AN EXISTING INSTALLATION

If you encountered issues during an installation of DBXL v3.0, you might need to perform some cleanup before running the installer again. Here are some items to check before trying the installer again:

1. Are there app pools and QdabraWebService directories? Check this using the IIS Manager and remove if present. The Dbxl App pool name will be DbxlAppPoolXXX where XXX is the website ID.
2. Use SQL Server Management Studio to delete any databases that were created (namely QdabraDBXL and QdabraUtility).
3. After performing the above cleanup steps, perform an iisreset, and then try reinstalling DBXL.



<http://www.qdabra.com>

Last updated on 10/14/2015 9:06 PM

Copyright © 2014 Autonomy Systems, LLC. All rights reserved.

QDABRA DBXL PDF RENDERING SERVICE

The DBXL PDF Rendering Service is a new feature for DBXL v3.0 that prints submitted documents as PDF files sent as an attachment or a downloadable link via email.

This section will guide you through the installation of DBXL Rendering Service and assumes that DBXL v3.0 is already installed.

PREREQUISITES

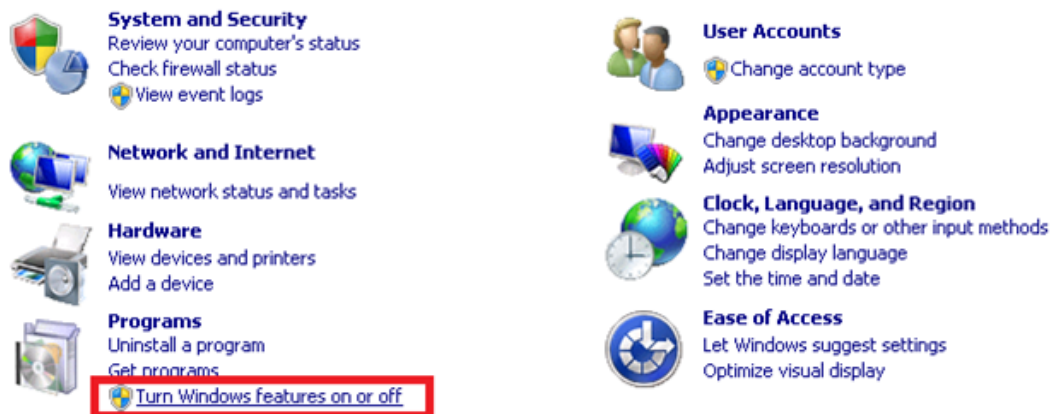
The Qdabra DBXL Rendering Service requires the following components

- IIS SMTP Service is a component for forwarding e-mail messages to an SMTP server for delivery.
- [DBXL Administration Tool v3.0](#)

INSTALLING THE SMTP SERVICE

The SMTP service is not installed by default with IIS. You must install the SMTP service using Control Panel. Installing the SMTP service creates a default SMTP configuration that you can then customize by using IIS Manager.

On the Start menu, click Control Panel, double-click Add or Remove Programs, and then click Turn Windows features on or off.



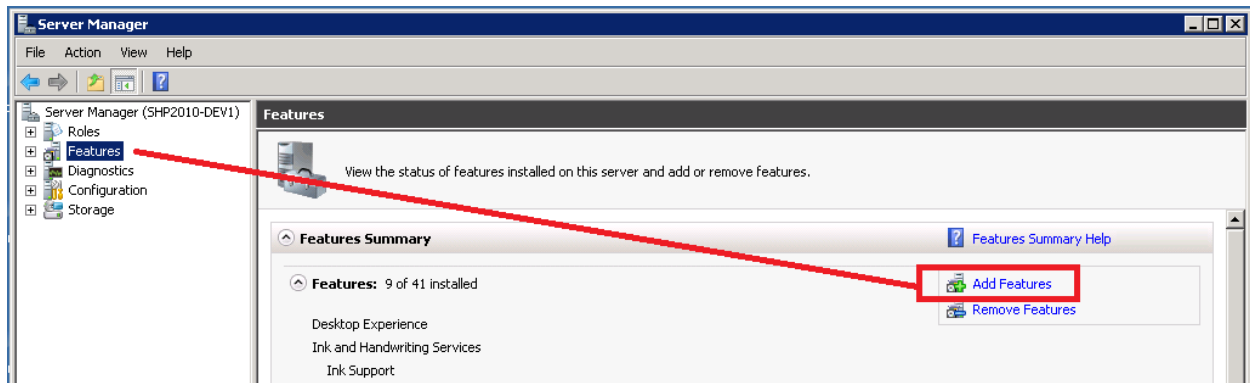
- Click Add Features.



<http://www.qdabra.com>

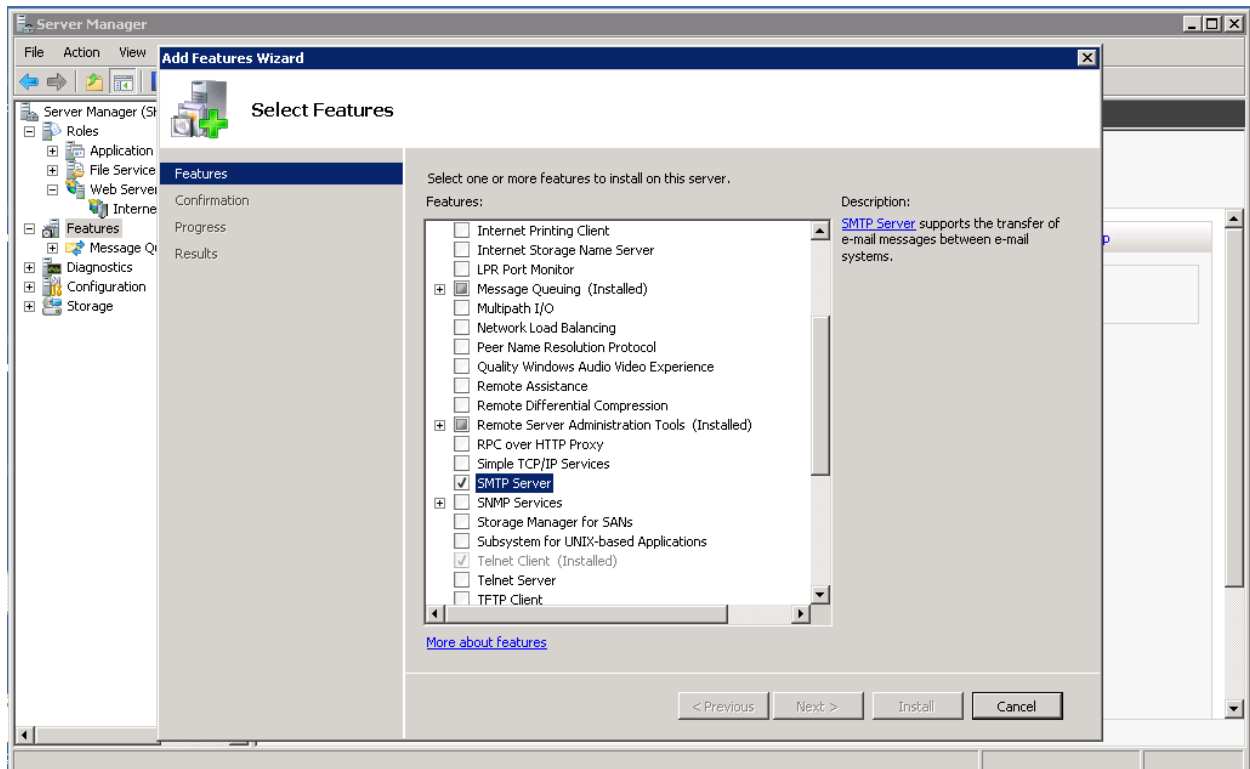
Last updated on 10/14/2015 9:06 PM

Copyright © 2014 Autonomy Systems, LLC. All rights reserved.



- Enable SMTP Server by ticking the checkbox, and then browse through the Add Features Wizard.

Another option is to use mail.adhost.com.



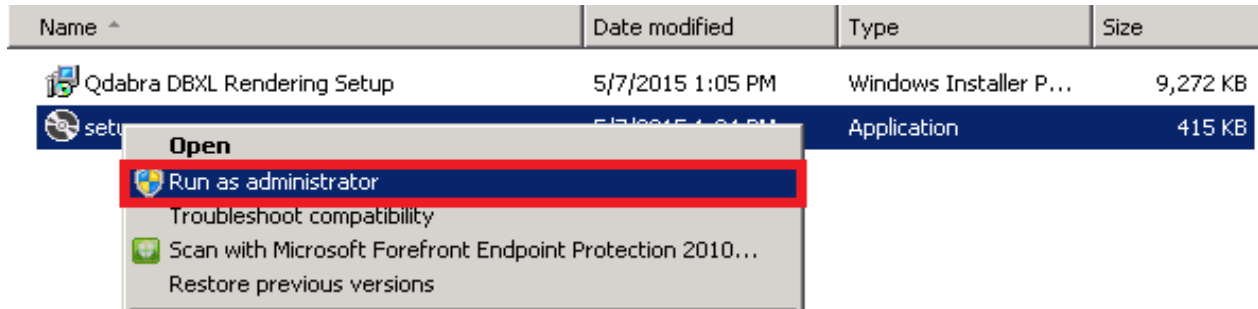
<http://www.qdabra.com>

Last updated on 10/14/2015 9:06 PM

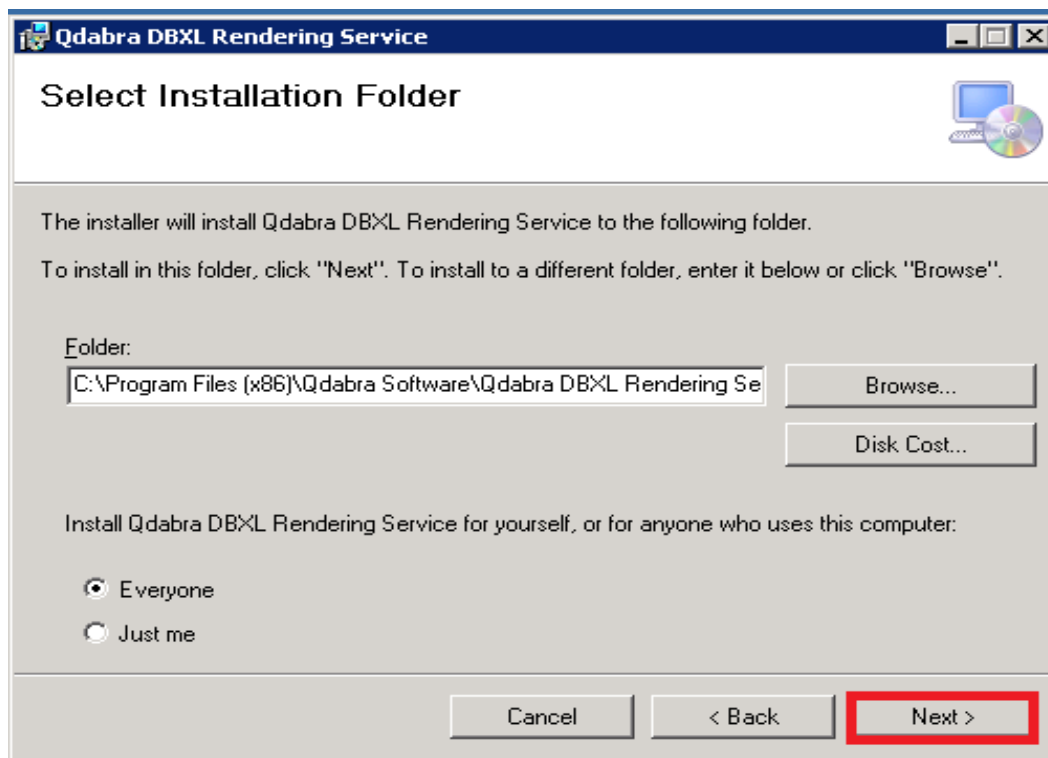
Copyright © 2014 Autonomy Systems, LLC. All rights reserved.

INSTALL QDABRA DBXL RENDERING SERVICE

- Right click on setup.exe and select Run as Administrator



- Click **Next** in the Welcome screen.
- Select the Installation Folder location (the installer selects the existing Qdabra Software folder location by default: C:\Program Files (x86)\Qdabra Software\Qdabra DBXL Rendering Service\). Click **Next**.



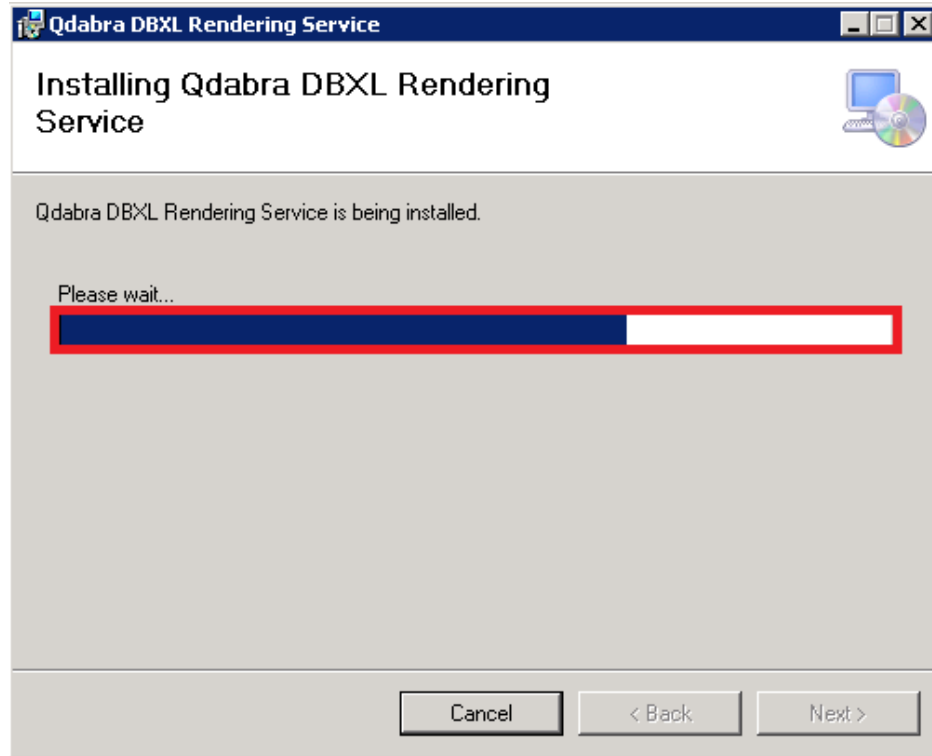
- Click **Next** to confirm the installation.



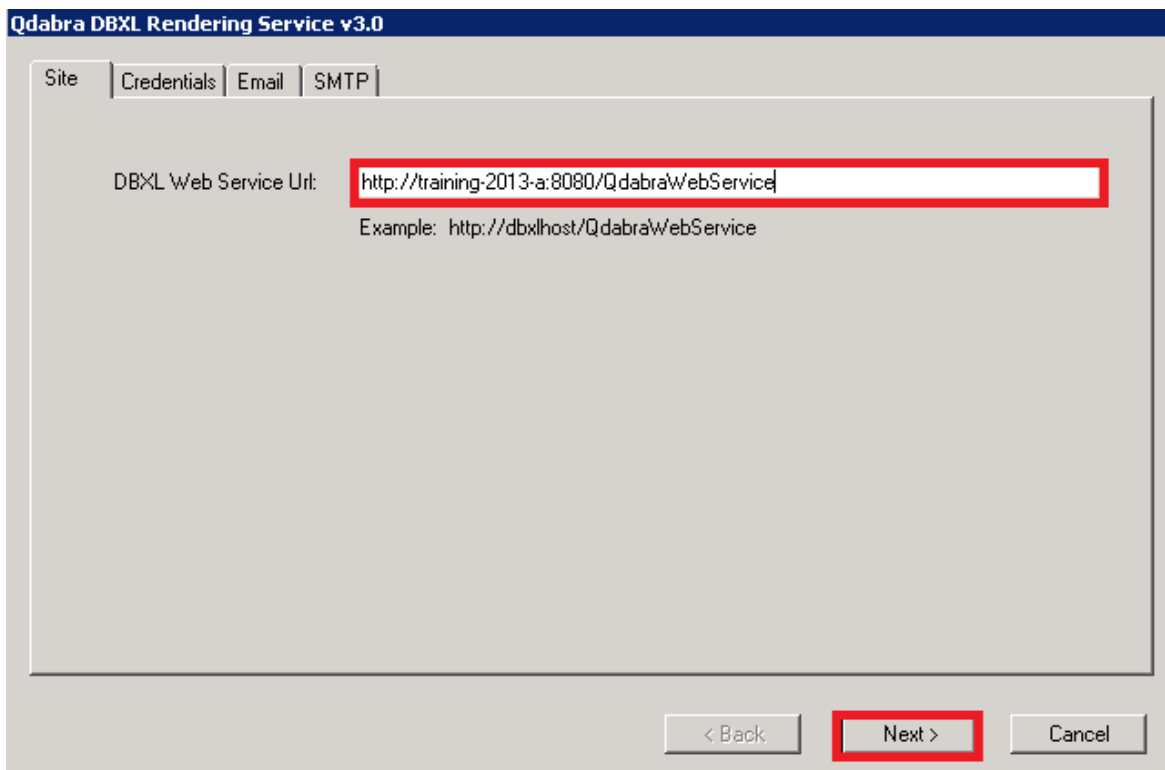
<http://www.qdabra.com>

Last updated on 10/14/2015 9:06 PM

Copyright © 2014 Autonomy Systems, LLC. All rights reserved.



- Enter the DBXL Web Service URL. Click **Next**.



- Select between Predefined and Configurable account credentials.
 - If you select Predefined, you will not need to provide credentials.

Qdabra DBXL Rendering Service v3.0

Site | Credentials | Email | SMTP

The Qdabra™ Rendering Service will run under these account credentials. This account must have DBXL Administrator permissions. You can change this account after installation in the Windows service applet.

Predefined Network Service

- If you select Configurable, you must provide an Account and Password.

Configurable

Account:

Password:

- Click **Next** to proceed to the following tab.
- Configure the Email settings:

Qdabra DBXL Rendering Service v3.0

Site | Credentials | Email | SMTP

Default values for email notifications.

From

Email Address:

Display Name:

Lock

Subject:

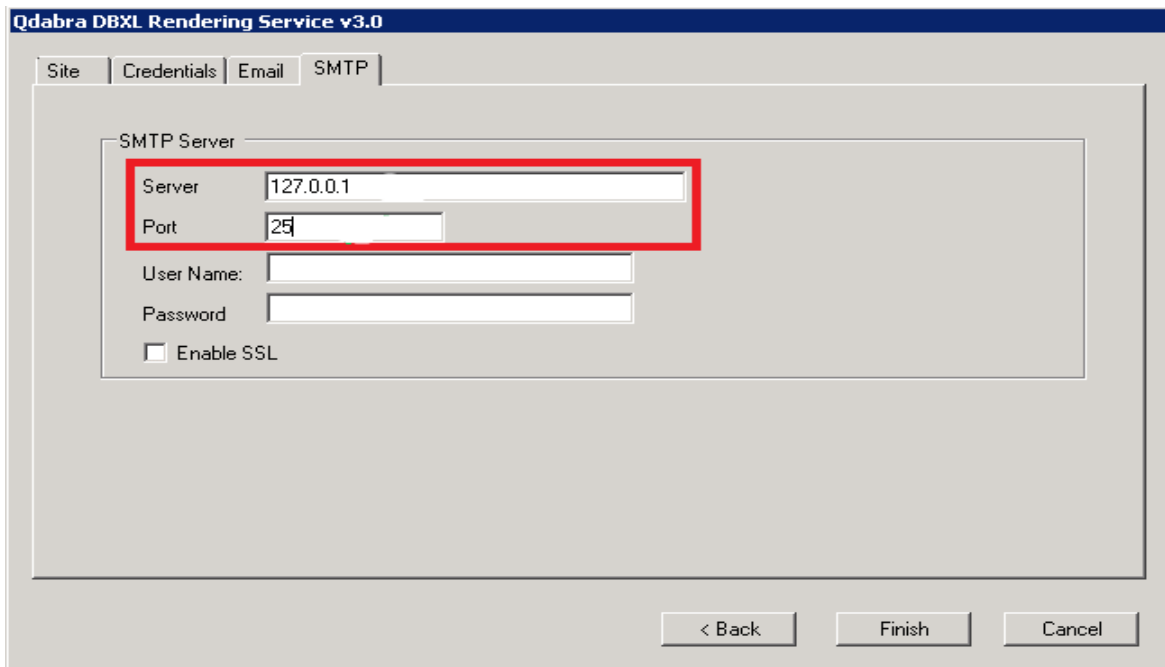
Body

Body is HTML

< Back Next > Cancel



- Click **Next** to proceed to the next tab.
- Configure the SMTP settings:
 - If it is on a local machine then the Server Name is - 127.0.0.1



Qdabra DBXL Rendering Service v3.0

Site | Credentials | Email | SMTP

SMTP Server

Server: 127.0.0.1

Port: 25

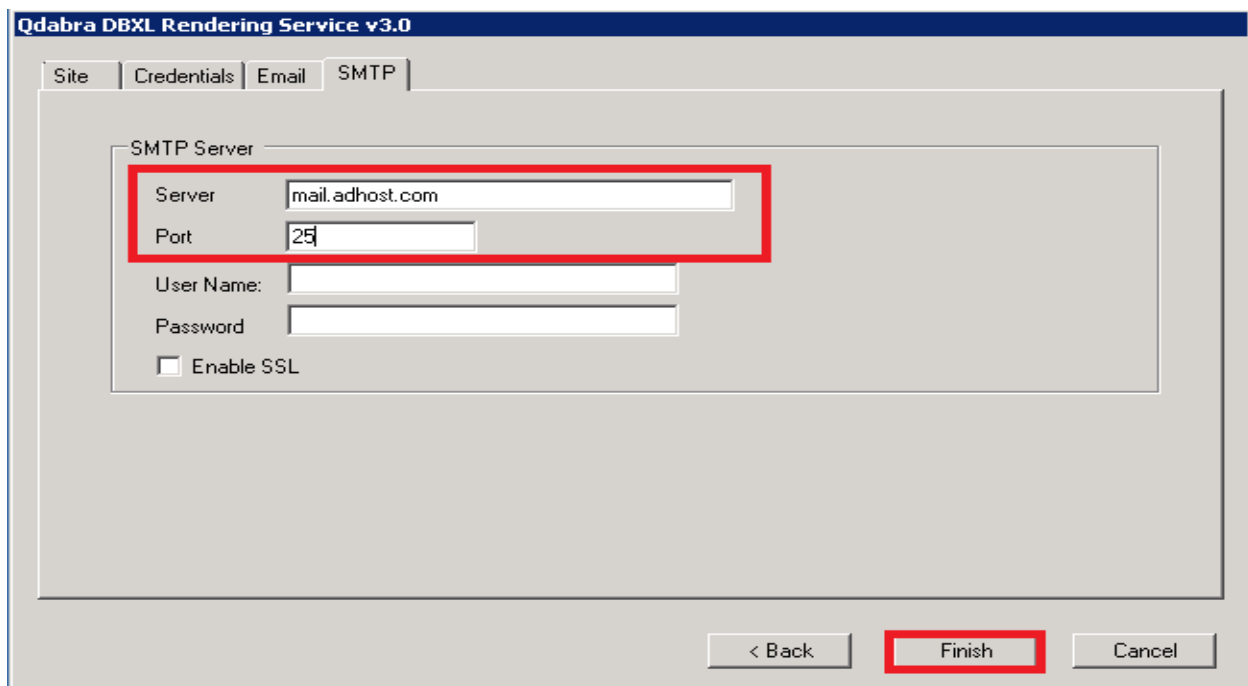
User Name: _____

Password: _____

Enable SSL

< Back Finish Cancel

- Otherwise, Add your own Server name. For example, I used my server name (mail.adhost.com).



Qdabra DBXL Rendering Service v3.0

Site | Credentials | Email | SMTP

SMTP Server

Server: mail.adhost.com

Port: 25

User Name: _____

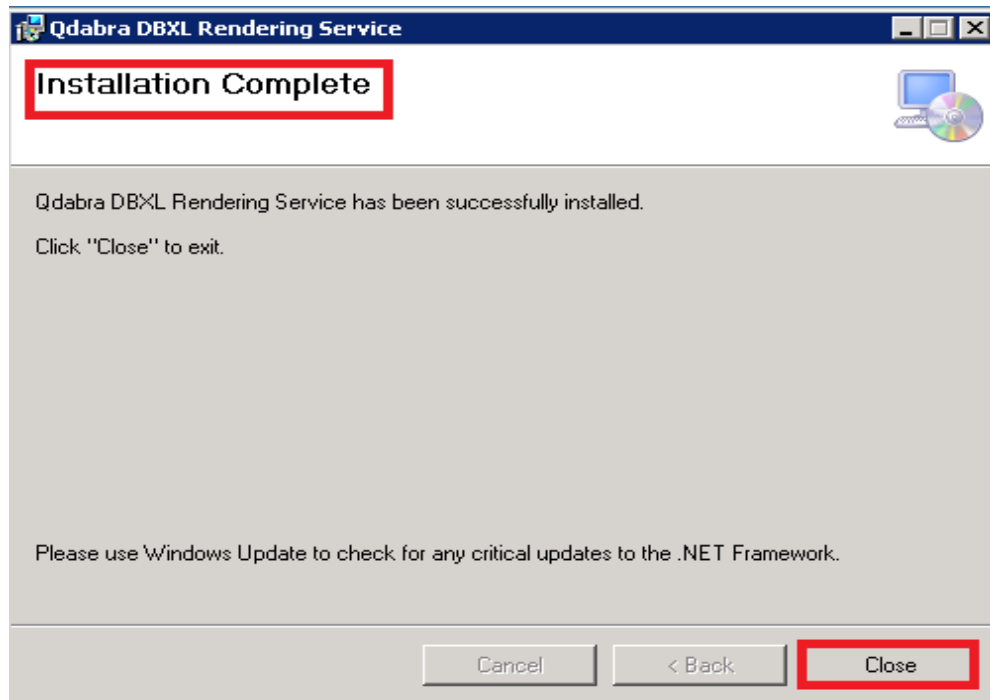
Password: _____

Enable SSL

< Back Finish Cancel



- Click **Finish** to complete the installation process.



- Close the installation wizard.

At the DBXL Administration Tool, the QdRender and QdRenderingMapping DocTypes should now be existing:

DATABASE ACCELERATOR Administration Tool

Configure Licenses New Configuration Refresh List

Document Type Configuration						
Name	Descriptions ◀	Form Version	Docs	Edit	Del	Open
QdExpenseReport-Sample		1.0.0.4	4			
QdRender		1.0.0.7	0			
QdRenderMapping		1.0.0.24	0			

System Document Types ◀

Powered by: **Qdabra® Database Accelerator** Copyright © 2008 Qdabra Software. All rights reserved.
 Qdabra and the Qdabra logo are trademarks of Autonomy Systems LLC. www.qdabra.com English ▾
 Web Service URL: <http://SHP2010-DEV1:8181/QdabraWebService/DbxIDocumentService.aspx>
 DBXL Version: 3.0.2015.0205
 Form Version: 2.9.0.0
 User: dlambatin



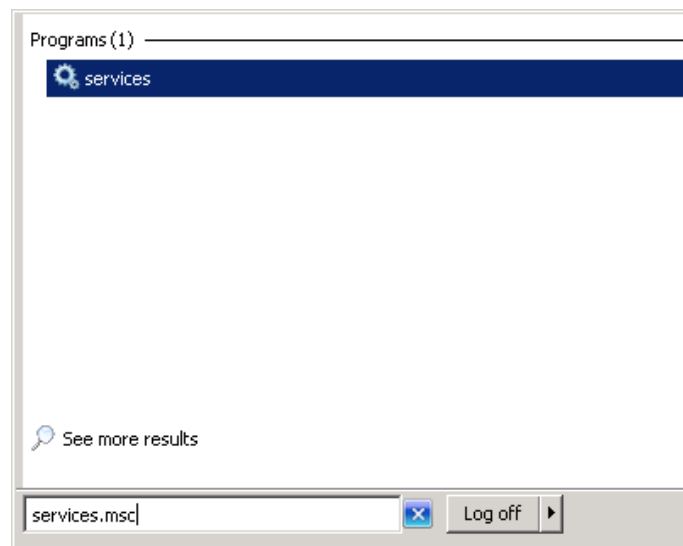
<http://www.qdabra.com>

Last updated on 10/14/2015 9:06 PM

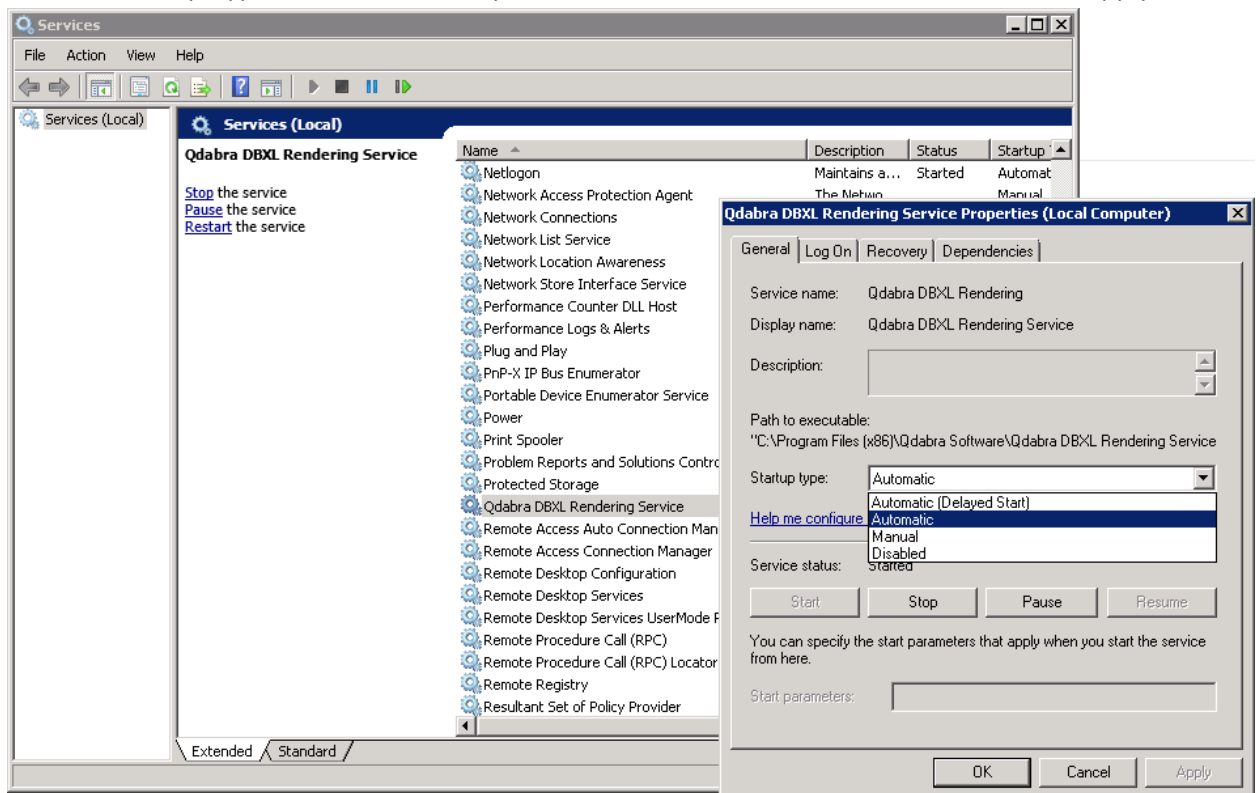
Copyright © 2014 Autonomy Systems, LLC. All rights reserved.

START QDABRA DBXL RENDERING SERVICE

- Open the Start Menu, type services.msc in the search box, press Enter:



- If prompted by UAC, then click on Yes.
- Right click on the Qdabra DBXL Rendering Service > Properties.
- Next to Startup type, click on the drop down menu and select Automatic and click Apply.



- Click on the Start button.



<http://www.qdabra.com>

Last updated on 10/14/2015 9:06 PM

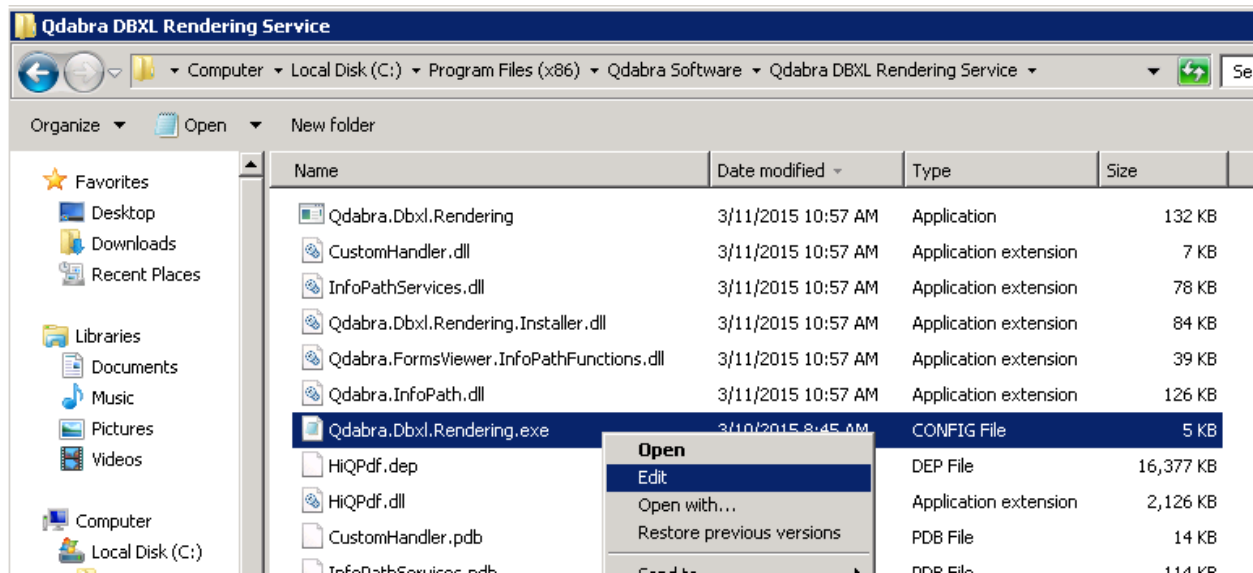
Copyright © 2014 Autonomy Systems, LLC. All rights reserved.

NOTE: If the Start option is grayed out and will not start, then you will need to restart the computer to start it after you set it to Automatic and clicked OK.

EDITING THE QDABRA.DBXL.RENDERING.EXE.CONFIG

In the event that the DBXL Rendering Service needs to be configured manually, follow the steps below:

- Locate the folder where DBXL Rendering Service is installed.
- Inside the Qdabra DBXL Rendering Service folder, edit the Qdabra.Dbxl.Rendering.exe.config using a text editor such as **Notepad**.



Here's how the Config file will appear in notepad:

```
<appSettings>
  <add key="XSNStoragePath" value="" />
  <add key="DBXL_URL" value="http://shp2010-dev1:8181/QdabraWebService" />
  <add key="ClientSettingsProvider.ServiceUri" value="" />

  <add key="Smtp_Servername" value="127.0.0.1" />
  <add key="Smtp_Port" value="25" />
  <add key="Smtp_UserName" value="" />
  <add key="Smtp_SequenceNumber" value="" />
</appSettings>
```



<http://www.qdabra.com>

Last updated on 10/14/2015 9:06 PM

Copyright © 2014 Autonomy Systems, LLC. All rights reserved.

```

<add key="Smtp_Password" value="" />

<add key="Smtp_EnableSsl" value="false" />

<add key="Email_Subject" value="Document Rendering" />
<add key="Email_Body" value="Attached is the rendering of your document" />
<add key="Email_BodyIsHtml" value="false" />
<add key="Email_FromAddress" value="NoReply@qdabra.com" />
<add key="Email_FromDisplayName" value="" />
<add key="Email_FromLocked" value="false" />

<!-- CustomHandler that will be called after rendering -->
<add key="CustomHandler" value="CustomHandler.CustomRendering, CustomHandler" />
<!-- -->

<!-- Properties sepcific to the CustomHandler implementation -->
<add key="PdfMetadataConnString" value="" />
<add key="PdfOutputFolder" value="" />
<add key="PdfFileNameXPath" value="" />
<!-- -->

</appSettings>

```

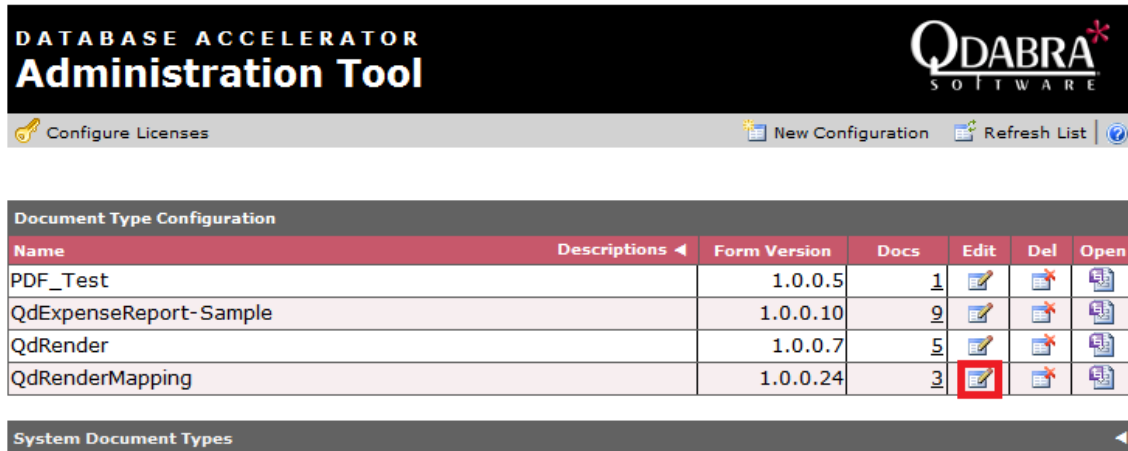
Notice that the texts in **red** are the same values specified when Qdabra DBXL Rendering Service was installed.


Editing these values spontaneously updates the settings of the Qdabra DBXL Rendering Service.



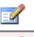


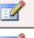






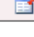

CREATE A PDF MAPPING

- Click Edit Icon for the **QdRenderMapping** doctype.



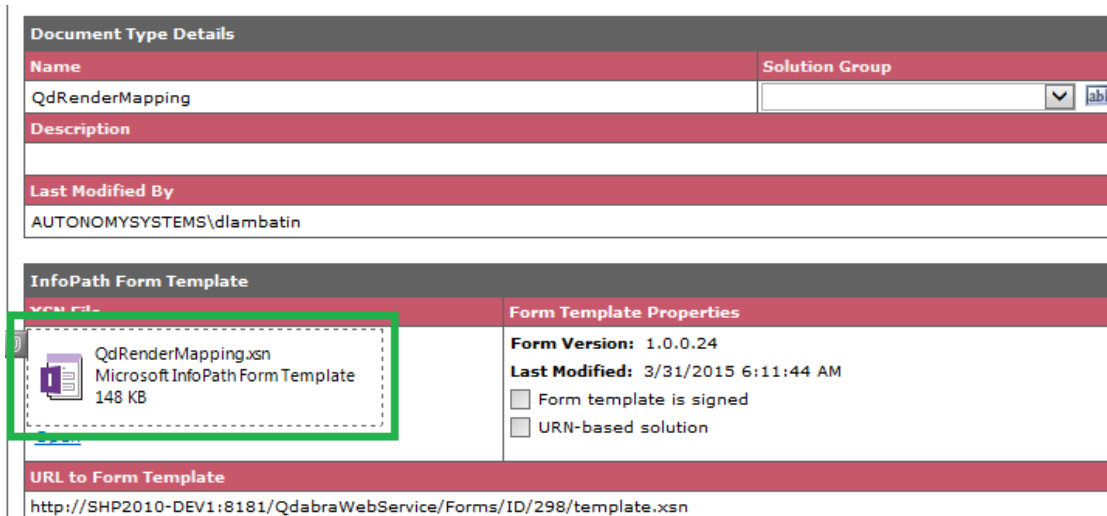
DATABASE ACCELERATOR Administration Tool 

Configure Licenses | New Configuration | Refresh List

Name	Descriptions	Form Version	Docs	Edit	Del	Open
PDF_Test		1.0.0.5	1			
QdExpenseReport-Sample		1.0.0.10	9			
QdRender		1.0.0.7	5			
QdRenderMapping		1.0.0.24	3			

System Document Types

- Double click the **QdRenderMapping.xsn**




Document Type Details

Name	Solution Group
QdRenderMapping	

Description

Last Modified By
AUTONOMYSYSTEMS\dlambatin

InfoPath Form Template

Form Template Properties	
<p> QdRenderMapping.xsn Microsoft InfoPath Form Template 148 KB</p>	<p>Form Version: 1.0.0.24 Last Modified: 3/31/2015 6:11:44 AM</p> <p><input type="checkbox"/> Form template is signed <input type="checkbox"/> URN-based solution</p>

URL to Form Template
<http://SHP2010-DEV1:8181/QdabraWebService/Forms/ID/298/template.xsn>

- Once the form opens, indicate a mapping name if desired.
- Select a **Target Document Type** from the dropdown
- Click **Load Information**



View

Select the view that you want to use for rendering.

When to Render

When should a form be rendered as a PDF?

- When a new document is submitted When an existing document is modified

How to Save Rendering

- Save as QdFile and send Email with link Send Email with Attachment

Email

Subject:

- Body is html

Body:

From Address

Please indicate who should be shown as the sender of the rendered e-mails.

- Use Static Values Determine values dynamically (XPath)

E-mail address:

Display name (optional):

To Addresses

You can indicate static values for the recipients of the e-mails, determine them dynamically using XPath, or both.

Static Values

E-mail Address:

- Add a static To: address

Display Name (optional):

Dynamic Values

XPath to e-mail address(es):

XPath to display name(s) (optional, relative to e-mail field):

CC Addresses (optional)

Static Values

E-mail Address:

- Add a static CC: address

Display Name (optional):

Dynamic Values

XPath to e-mail address(es):

XPath to display name(s) (optional, relative to e-mail field):

BCC Addresses (optional)

Static Values

E-mail Address:

- Add a static BCC address

Display Name (optional):

Dynamic Values

XPath to e-mail address(es):

XPath to display name(s) (optional, relative to e-mail field):

Save

Form Version: 1.0.0.24



<http://www.qdabra.com>

Last updated on 10/14/2015 9:06 PM

Copyright © 2014 Autonomy Systems, LLC. All rights reserved.

- Select a View to be printed in PDF
- Specify when PDF rendering should be triggered.
- Specify how PDF Rendering is saved.
- Enter a default Subject and Body for the email
- Specify a sender
 - Static: Uses hardcoded data (i.e John@email.com)
 - Dynamic: Uses an xpath (i.e. /my:myFields/my:Email)
- Specify Recipients – Static data or Dynamic
- Click **Save** button.

Notes:

- Specifying a Mapping name helps identifying the mappings easier – greatly helps if you are dealing with multiple doctypes.

General Database Permissions SharePoint Documents Taxonomy Tree

Export Documents

Import Documents

Query Documents

To limit the number of documents shown, enter a starting Doc. ID and the number of documents to show, and then click query. You can then jump forward or backward by the number of shown documents, or click Query All to show all documents. To search for a Document with a specific Ref. ID, type the ID into the field, and then click Query.

Starting Doc. ID: 346 Ref. ID: 1 Range: 20 Previous Next Query Query All

If reshredding more than 100 documents, please use the DBXL Migration Tool Refresh

Doc. ID	Ref. ID	Version #	Name	Author	Description	New	
346	12		Test		Mapping for PDF_Test	Open	<input type="checkbox"/>
354	14		QdExpenseReport PDF Mapping		Mapping for QdExpenseReport-Sample	Open	<input type="checkbox"/>
366	15		NFPA TEST		Mapping for NFPA25-AES21-QUARTERLYANNUALWETPIPE	Open	<input type="checkbox"/>

- Updating the DocType for PDF Printing requires restarting the service – see [Start Qdabra Dbxl Rendering Service](#)
- Uninstalling the PDF Rendering service:
 - Stop the service at Services Console
 - Uninstall the program from Control Panel by running the uninstallation wizard
- Reinstallation
 - If you encounter a “Service Already Exists” error, run command prompt as administrator and execute the command:

sc delete “Qdabra DBXL Rendering”



<http://www.qdabra.com>

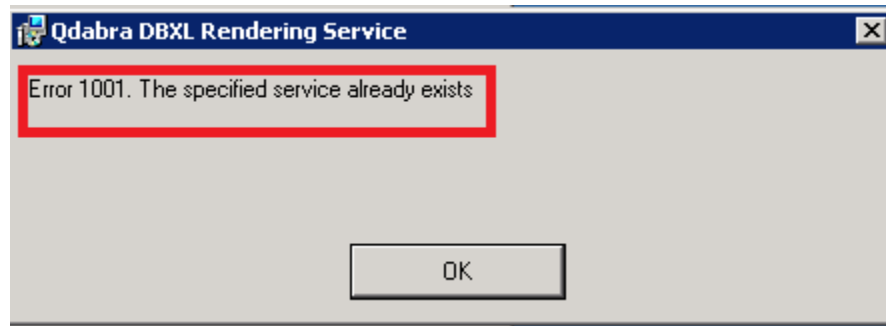
Last updated on 10/14/2015 9:06 PM

Copyright © 2014 Autonomy Systems, LLC. All rights reserved.

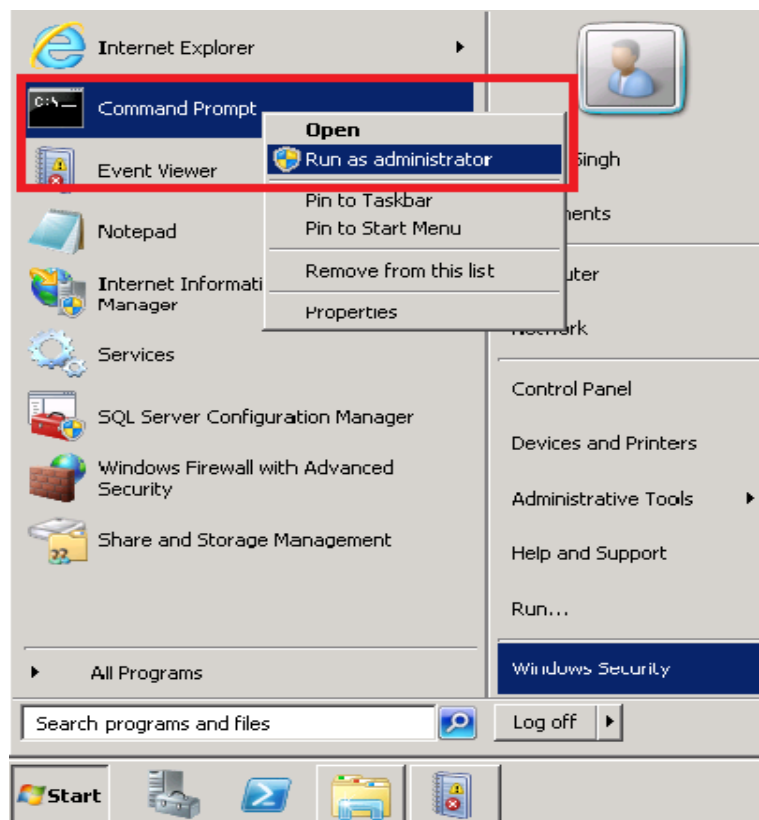
ADDITIONAL STEPS TO TROUBLESHOOT ERRORS:

“ERROR 1001” DURING DBXL RENDERING INSTALL:

While installing DBXL Rendering Service if you get the “Error 1001” as shown below, please perform the following additional steps:



- Go to the “START” menu, right-click on the *Command Prompt* and select “Run as administrator”.



- On Command Prompt window, type the following command: **sc delete “Qdabra DBXL Rendering”** and press ENTER.



```

Administrator: Command Prompt
Microsoft Windows [Version 6.1.7601]
Copyright (c) 2009 Microsoft Corporation. All rights reserved.

C:\Windows\system32>cd/
C:\>sc delete "Qdabra DBXL Rendering"

```

- You should see a Success message that verifies that the Service has been deleted successfully.

Print Spooler	Loads files ...	Started	Automatic	Local System
Problem Reports an...	This servic...		Manual	Local System
Protected Storage	Provides pr...		Manual	Local System
Qdabra DBXL Rend...			Automatic	Network S...
Remote Access Aut...	Creates a ...		Manual	Local System
Remote Access Co...	Manages di...		Manual	Local System

```

Administrator: Command Prompt
Microsoft Windows [Version 6.1.7601]
Copyright (c) 2009 Microsoft Corporation. All rights reserved.

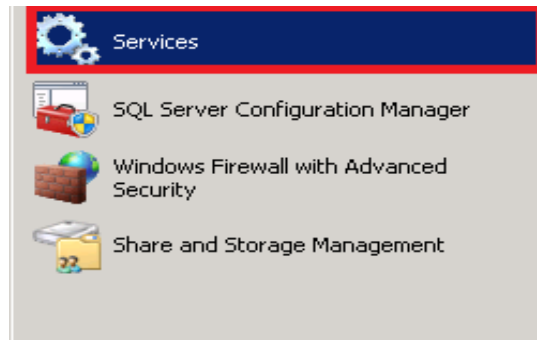
C:\Windows\system32>cd/
C:\>sc delete "Qdabra DBXL Rendering"
ISC1 DeleteService SUCCESS

C:\>_

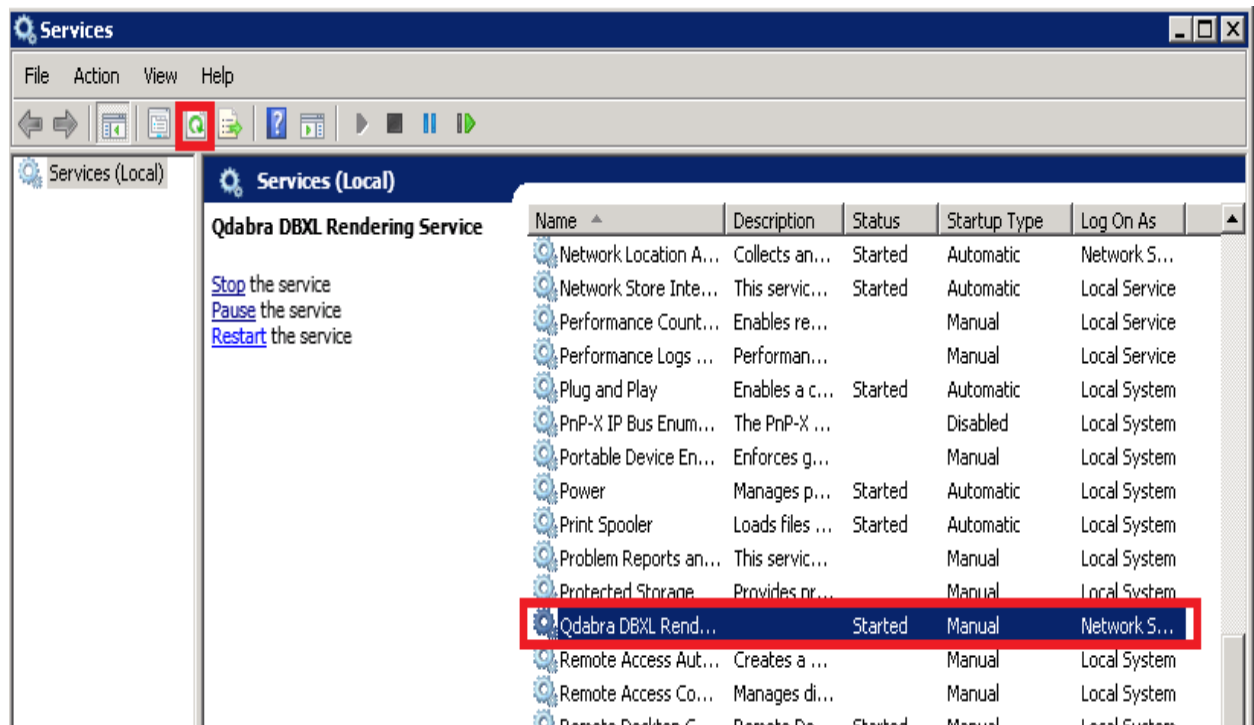
```

- Open "Services" from the **Start** menu and navigate to the "Qdabra DBXL Rendering service".



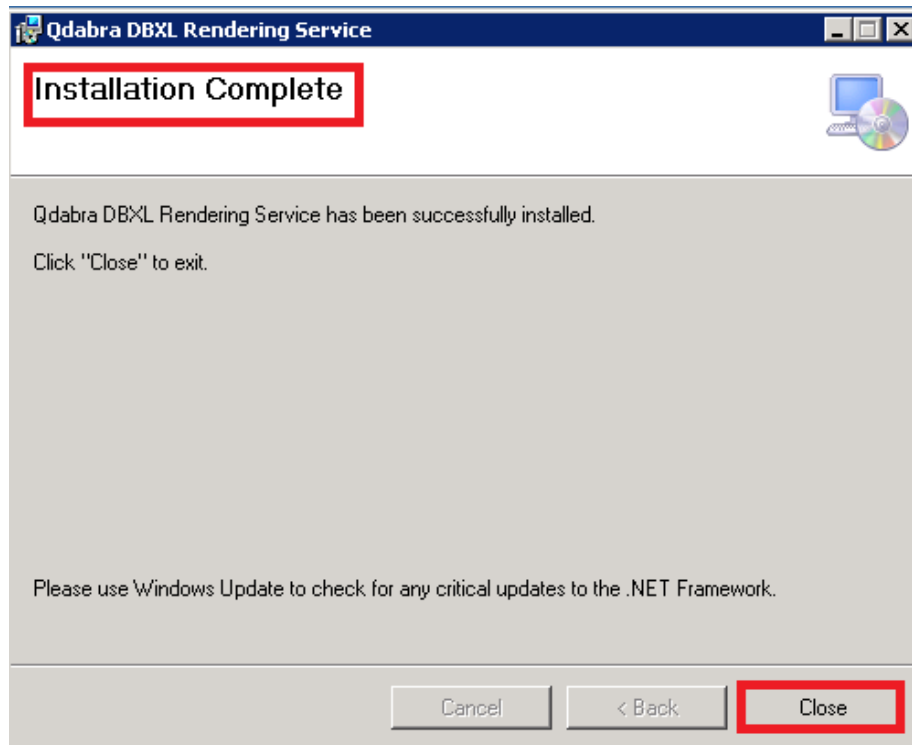


- Click on **Refresh** icon on the top left side of the 'Services' window.



- Follow all the steps to install DBXL Rendering Service as described earlier in the document.
- When the Installation is successful, you will see the following window:





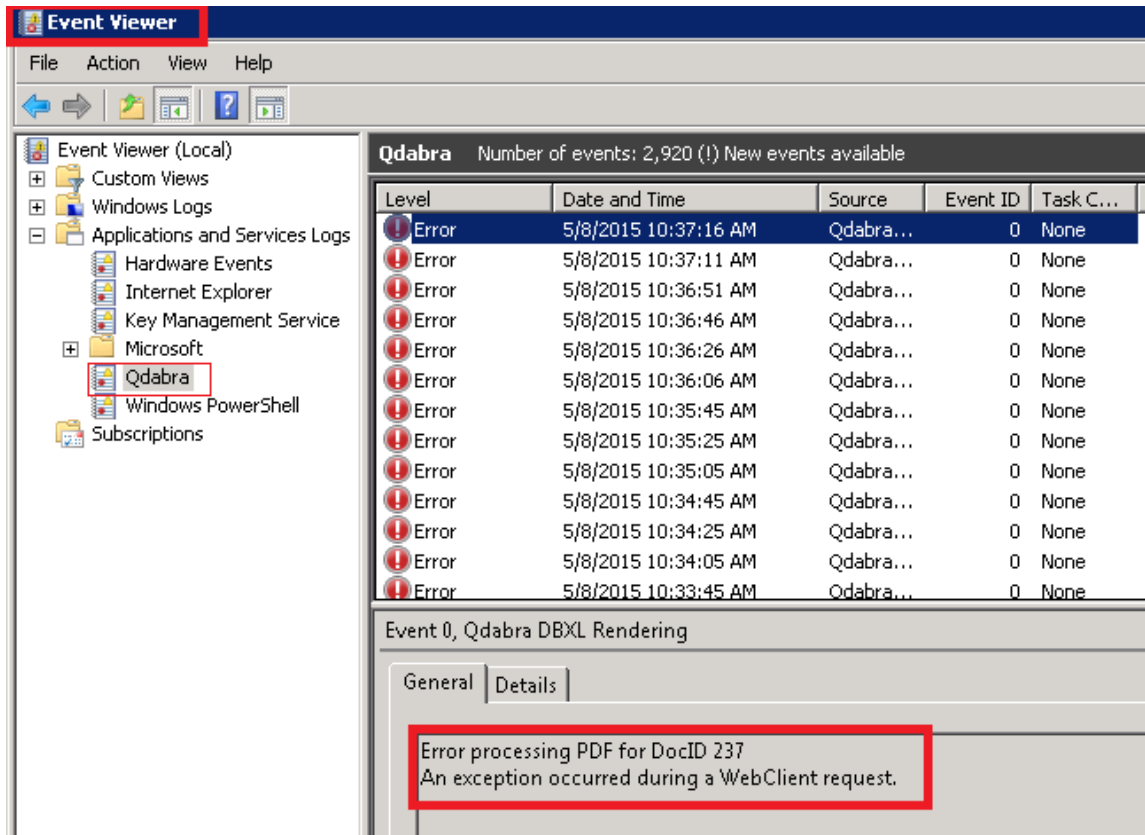
- Click on **Close**.

“ERROR PROCESSING PDF FOR DOCID”:

After installing DBXL Web Service and Rendering Service, create a PDF Mapping following the steps described in this document.

- Open the Sample Expense Report form, enter the values including email address of the recipients (you can give your Outlook address to verify it) and click on **Submit**.
- To verify that PDF Rendering is working correctly, open the **Event Receiver** on the machine where you installed DBXL Rendering service.
- If you get the error message- “*Error Processing PDF for DocId*”, please perform the following additional steps:





The screenshot shows the Windows Event Viewer application. The left pane displays the event log hierarchy, with 'Qdabra' selected under 'Applications and Services Logs'. The main pane shows a list of error events from the Qdabra service. The selected event details are as follows:

Level	Date and Time	Source	Event ID	Task C...
Error	5/8/2015 10:37:16 AM	Qdabra...	0	None
Error	5/8/2015 10:37:11 AM	Qdabra...	0	None
Error	5/8/2015 10:36:51 AM	Qdabra...	0	None
Error	5/8/2015 10:36:46 AM	Qdabra...	0	None
Error	5/8/2015 10:36:26 AM	Qdabra...	0	None
Error	5/8/2015 10:36:06 AM	Qdabra...	0	None
Error	5/8/2015 10:35:45 AM	Qdabra...	0	None
Error	5/8/2015 10:35:25 AM	Qdabra...	0	None
Error	5/8/2015 10:35:05 AM	Qdabra...	0	None
Error	5/8/2015 10:34:45 AM	Qdabra...	0	None
Error	5/8/2015 10:34:25 AM	Qdabra...	0	None
Error	5/8/2015 10:34:05 AM	Qdabra...	0	None
Error	5/8/2015 10:33:45 AM	Qdabra...	0	None

The selected event details are:

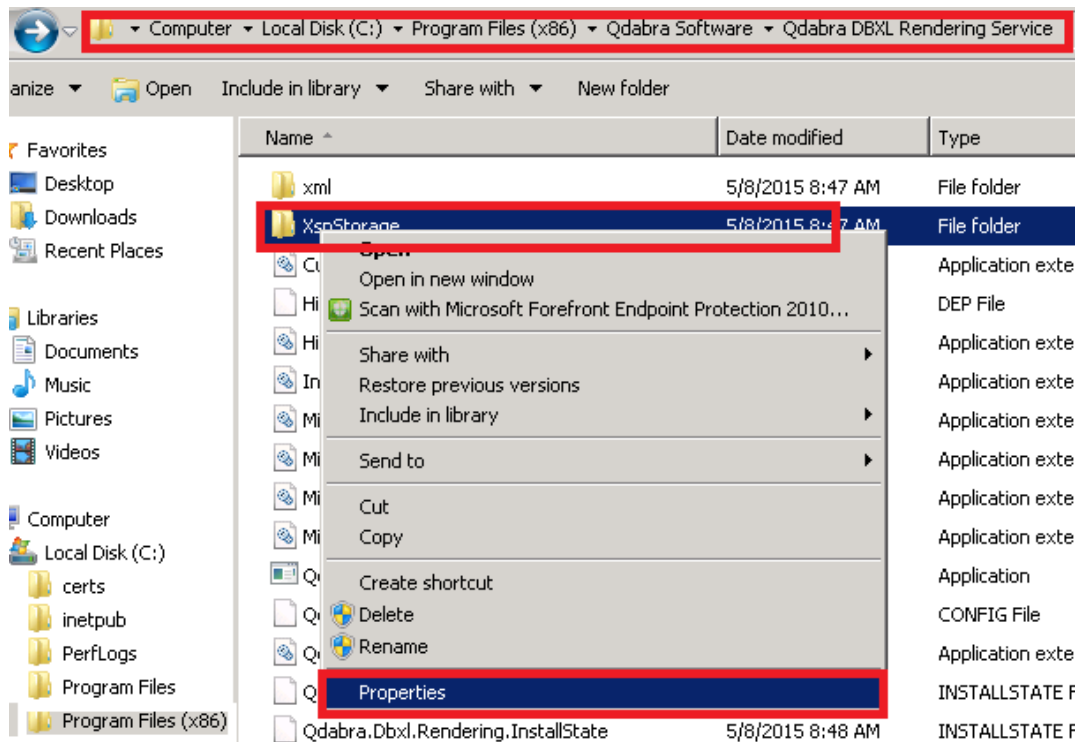
Event 0, Qdabra DBXL Rendering

General Details

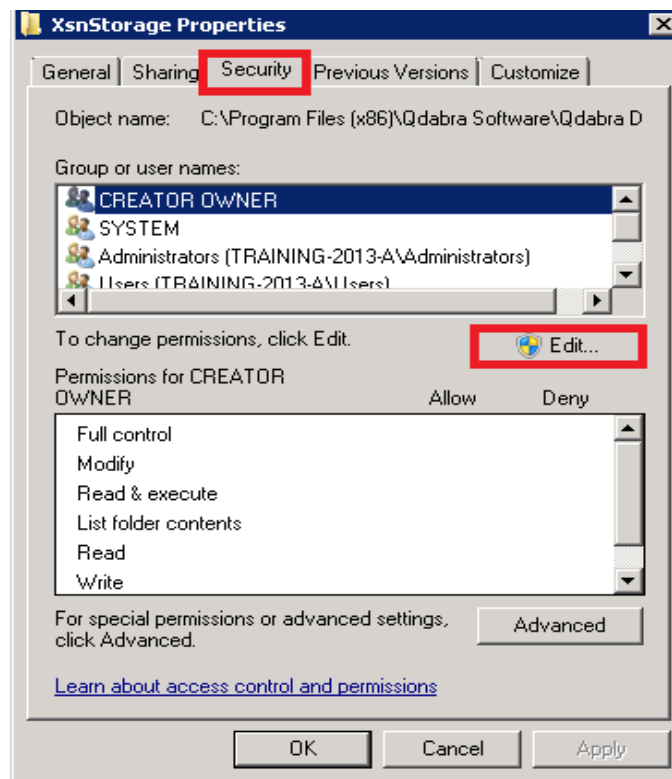
Error processing PDF for DocID 237
An exception occurred during a WebClient request.

- Navigate to the Parent folder from Windows Explorer, i.e. **C:/Program Files(x86)/Qdabra Software/Qdabra DBXL Rendering Service/**.
- Right-click on the XsnStorage folder and select **Properties**.

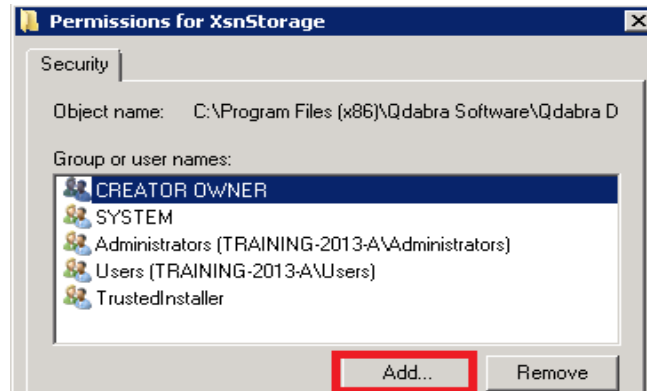




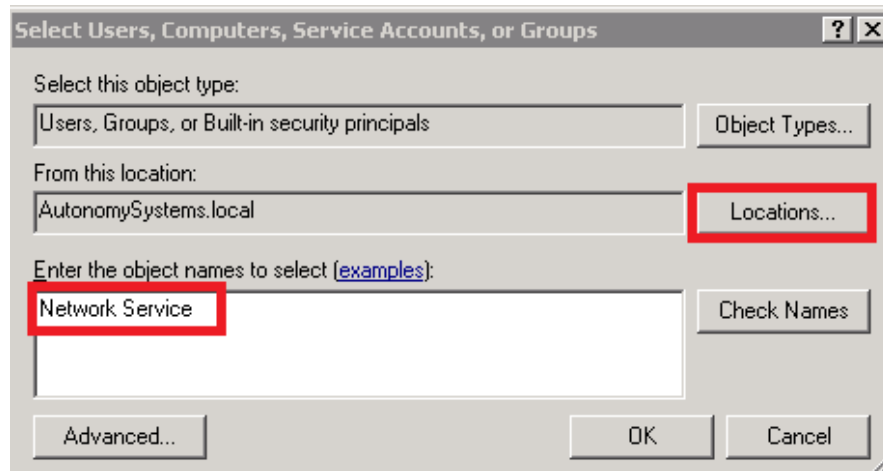
- On the “XsnStorage Properties” window, click on **Security** tab and click **Edit**.



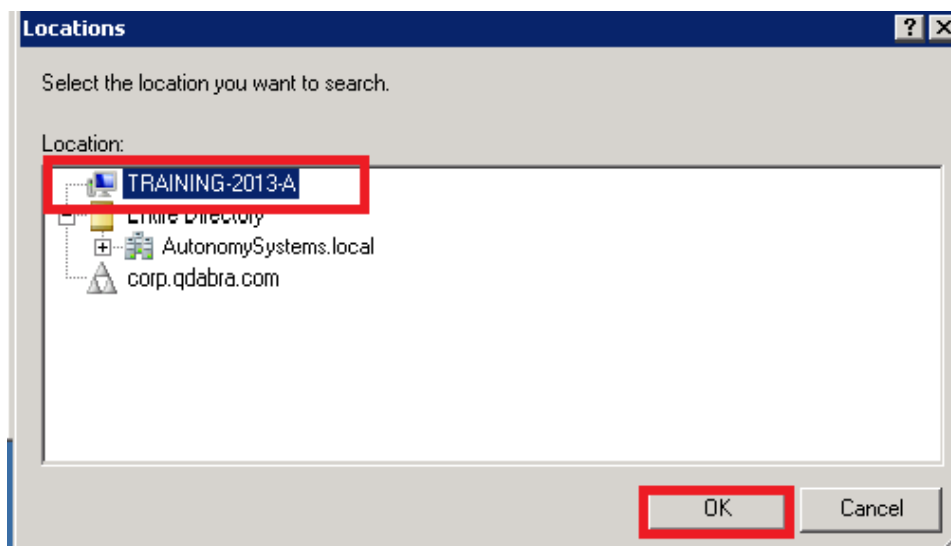
- On the next window click on **“Add”**.



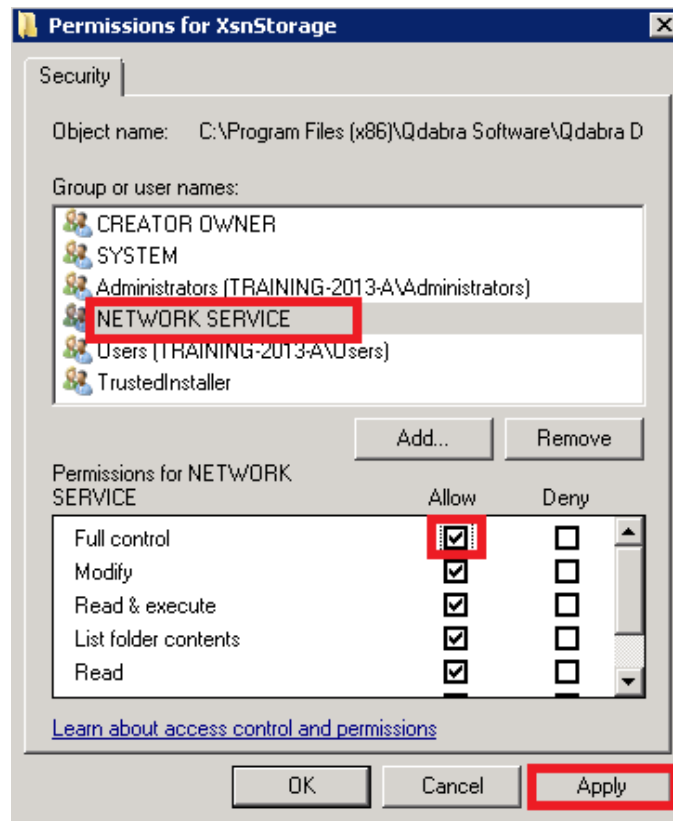
- On the next window, give **“Network Service”** as the object name. Click on **Locations**.



- Change the location to your local machine. Click **OK**.



- Select NETWORK SERVICE and check the Full Control box. Click **Apply**.



- Click **OK** to close all the windows.
- Now, submit a document from the DAT by giving the emails of the recipients (give your email address to verify).



EXPENSE REPORT

Report Date: Expense Code: Start Date: End Date:
 Business Purpose:

Employee Information

Name: Title:
 Department: ID Number:
 E-mail Address:

Manager Information

Name: E-mail Address:

Itemized Expenses

Date	Description	Category	Cost
5/8/2015	Chocolates	Gifts	80.00
5/8/2015	Coffee	Morale	20.00
5/8/2015	Headset	Office supplies	120.00
Subtotal			220.00
Less cash advance			0.00
Total expenses			220.00

Item Details

- You should see an email with the PDF of the form you just submitted.

Deleted Items

Prachi.Singh@Qdabra.com

Inbox 1

- Qdabra@mcafee
- Support
- Drafts [2]
- Sent Items
- Deleted Items
- Hightail Outbox
- Junk E-Mail
- MY SERVICES
- Outbox
- RSS Feeds
- Search Folders

NoReply@qdabra... 11:22 AM

Hello World!

Qdabra Rocks! <end>

NoReply@qdabra... 11:16 AM

Hello World!

Qdabra Rocks! <end>

NoReply@qdabra... 11:16 AM

Hello World!

Qdabra Rocks! <end>

noreply@infopath... 11:09 AM

Re: Convert *.xml from ...

Re: Convert *.xml from a

Formsboard Notif... 10:53 AM

Tasks: Kathleen Harford...

Hello,

Formsboard Notif... 10:53 AM

Customer Support: Kat...

Hello,

Kathleen Harford 10:31 AM

Re: Follow-up: Support...

Hi Prachi, It was

noreply@infopath... 10:17 AM

Re: Submit via Web Ser...

Message **2015-05-08.pdf (161 KB)**

EXPENSE REPORT

Report Date: Expense Code: Start Date: End Date:
 Business Purpose:

Employee Information

Name: Title:
 Department: ID Number:
 E-mail Address:

Manager Information

Name: E-mail Address:

Itemized Expenses

Date	Description	Category	Cost
5/8/2015	Chocolates	Gifts	80.00
5/8/2015	Coffee	Morale	20.00
5/8/2015	Headset	Office supplies	120.00
Subtotal			220.00
Less cash advance			0.00
Total expenses			220.00

Item Details



SUPPORT

If you have encountered issues while installing DBXL, please contact Qdabra at support@qdabra.com.

If DBXL has been successfully installed try out the Getting Started document, which is linked from DBXL's default.htm page.

For any other questions not covered in this document, please contact Qdabra Software.



<http://www.qdabra.com>

Last updated on 10/14/2015 9:06 PM

Copyright © 2014 Autonomy Systems, LLC. All rights reserved.